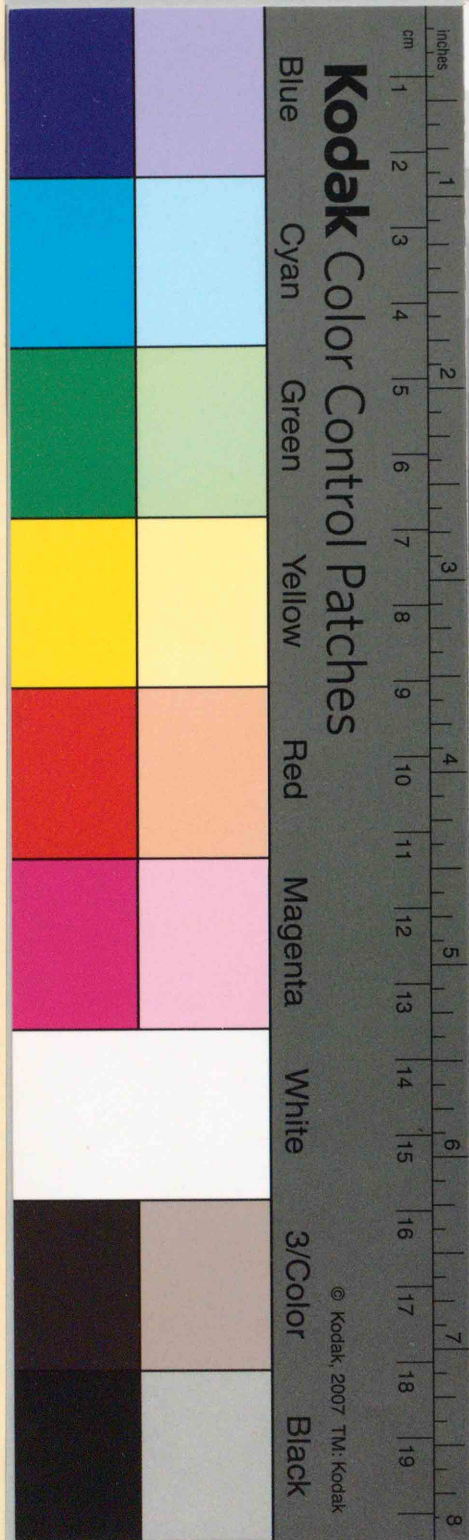


43289

教科書文庫

4
419
31-1943
20003 82909

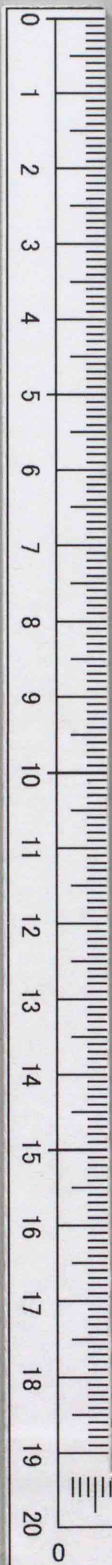


Kodak Gray Scale

A 1 2 3 4 5 6 M 8 9 10 11 12 13 14 15 B 17 18 19



© Kodak, 2007 TM: Kodak



教科書文庫

4

419

31-1943

2000302909

標準
珠算鍊成帖



初等科第五學年用

教師用



広島大学図書

2000302909

行所
學調查會

375.9
Gail

資料室
中央図書館

教科書文庫

4

419

31-1943

2000302909

標準珠算錬成帖ニツイテ

1. コノ錬成帖ハ初等科第五學年ノ皆サンノ珠算ノ實力ヲ向上スルヤウニ作ツテアリマス。
2. コノ錬成帖ハ初メノ基本問題デ算法ヲ覺ユ次ニ練習問題ニ依ツテ實力ヲツケルヤウニナツテキマス。
3. 珠算ノ上達ハ①正シイ姿勢②正シイ指ノ使ヒ方③正シイ珠ノ運ビ方デ同ジ問題ヲ何度モ何度モ反復錬成スルコトニ依ツテ出來ルモノデスカラコノ錬成帖ノ問題ハ數回反復錬成スルコトガ必要デス。
4. 反復錬成ノ目標トシテ練習問題ニハ制限時間ガ付テキマス。コノ制限時間以内ニ計算ガ出來ルヤウニ反復錬成スルコトガ大切デス。
5. 始メノ累加累減表ヲ充分ニ利用シテ計算速度ヲ速メテ下サイ。例ヘバ時間ヲ一分間ト定メテ専心1296ヲ何回モ累加シテ一分間デ計算ヲ止メテ答ガ59616トナツタ。先ツ此ノ基數ヲ暗算デ加ヘテ見ルト $5+9+6+1+6=27$ トナリマス。更ニ其ノ $2+7$ トヲ加ヘルト $2+7=9$ トナリマス。斯ノ様ニ最後ガ9トナレバ其計算ハ概ネ正シイコトガワカリマスカラソレカラ表ヲ見テ59616ノ所ヲ探シテ其ノ上欄ヲ見ルト40左欄ヲ見ルト6デアアルカラ一分間ニ46回累加シタ事ガワカリマス。依ツテ其ノ成績ヲ下ノグラフニ記入シテ進歩ノ有様ヲ眺メテ下サイ。答ノ基數ヲ暗算デ加ヘテ見テ最後ガ9ニナラス場合ハ計算ガ誤ツタノデアアルカラ表ヲ見ルマデニハ至ラナイ。累減ノ場合ハ累加ノ場合ノ逆ニスレバヨイ。
6. 答ノ數字ハ常ニ正、速、美ニ書ク様ニ心掛ケテ下サイ。

學童數學調查會識ス

6354 累加累減表

	0	10	20	30	40	50	60	70
0		63540	127080	190620	254160	317700	381240	444780
1	6354	69894	133434	196974	260514	324054	387594	451134
2	12708	76248	139788	203328	266868	330408	393948	457488
3	19062	82602	146142	209682	273222	336762	400302	463842
4	25416	88956	152496	216036	279576	343116	406656	470196
5	31770	95310	158850	222390	285930	349470	413010	476550
6	38124	101664	165204	228744	292284	355824	419364	482704
7	44478	108018	171558	235098	298638	362178	425718	489258
8	50832	114372	177912	241452	304992	368532	432072	495612
9	57186	120726	184266	247806	311346	374886	438426	501966
	70	60	50	40	30	20	10	0

一定時(分間) 累加累減成績表

回数	1	2	3	4	5	6	7	8	9	10	11	12	13	14	15	16	17	18	19	20
70																				
60																				
50																				
40																				
30																				
20																				
10																				

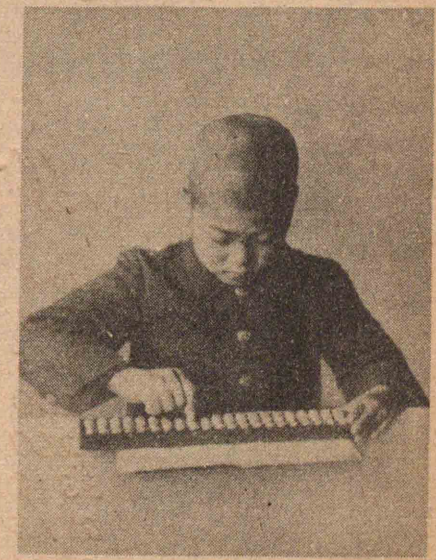
珠算の錬成には

- ① 姿勢を正しく
 - ② 運指を正しく
 - ③ 運珠を正しく
- } 精選された問題で
} 少くとも十回以上
} 反復錬成ませう

正しい姿勢圖



聴 取 算



見 取 算

乗 法

基数ヲ掛ケルコト 1.

基本問題

- (1) $33 \times 4 = 132$
- (2) $64 \times 8 = 512$
- (3) $444 \times 3 = 1332$
- (4) $648 \times 7 = 4536$

練習問題

- (1) $86 \times 2 = 172$
- (2) $32 \times 6 = 192$
- (3) $63 \times 4 = 252$
- (4) $44 \times 8 = 352$
- (5) $68 \times 3 = 204$
- (6) $23 \times 9 = 207$
- (7) $95 \times 5 = 475$
- (8) $78 \times 2 = 156$
- (9) $89 \times 3 = 267$
- (10) $59 \times 7 = 413$
- (11) $357 \times 5 = 1785$
- (12) $495 \times 3 = 1485$
- (13) $637 \times 7 = 4459$
- (14) $243 \times 6 = 1458$
- (15) $786 \times 2 = 1572$
- (16) $267 \times 8 = 2136$
- (17) $894 \times 4 = 3576$
- (18) $578 \times 9 = 5202$
- (19) $465 \times 7 = 3255$
- (20) $679 \times 2 = 1358$

基数ヲ掛ケルコト 2.

基本問題

- (1) $56 \times 2 = 112$
- (2) $585 \times 4 = 2340$
- (3) $12 \times 7 = 84$
- (4) $62 \times 4 = 248$

練習問題

- (1) $59 \times 2 = 118$
- (2) $54 \times 6 = 324$
- (3) $83 \times 5 = 415$
- (4) $25 \times 8 = 200$
- (5) $65 \times 4 = 260$
- (6) $558 \times 6 = 3348$
- (7) $563 \times 5 = 2815$
- (8) $257 \times 8 = 2056$
- (9) $765 \times 2 = 1530$
- (10) $595 \times 4 = 2380$
- (11) $18 \times 2 = 36$
- (12) $17 \times 5 = 85$
- (13) $24 \times 4 = 96$
- (14) $36 \times 3 = 108$
- (15) $18 \times 8 = 144$
- (16) $94 \times 2 = 188$
- (17) $31 \times 6 = 186$
- (18) $82 \times 4 = 328$
- (19) $73 \times 3 = 219$
- (20) $51 \times 8 = 408$

乗 法

基数ヲ掛ケルコト 3.

基本問題

- (1) $256 \times 3 = 768$
- (2) $354 \times 2 = 708$
- (3) $307 \times 8 = 2400$
- (4) $406 \times 5 = 2030$

練習問題

- (1) $132 \times 7 = 924$
- (2) $243 \times 4 = 972$
- (3) $512 \times 9 = 4608$
- (4) $735 \times 2 = 1470$
- (5) $271 \times 8 = 2168$
- (6) $351 \times 6 = 2106$
- (7) $412 \times 2 = 824$
- (8) $117 \times 9 = 1053$
- (9) $152 \times 4 = 608$
- (10) $328 \times 3 = 984$
- (11) $509 \times 3 = 1527$
- (12) $207 \times 6 = 1242$
- (13) $906 \times 4 = 3624$
- (14) $805 \times 7 = 5635$
- (15) $709 \times 9 = 6381$
- (16) $401 \times 5 = 2005$
- (17) $502 \times 8 = 4016$
- (18) $108 \times 5 = 540$
- (19) $905 \times 2 = 1810$
- (20) $305 \times 6 = 1830$

事實問題

名古屋カラ東京マデハ366kmアル一往復スルト何kmトナルカ。

答 732km

加 減 法 練 習

制限時間一問題 25秒

(1)	(2)	(3)	(4)	(5)
圓 錢	圓 錢	圓 錢	圓 錢	圓 錢
28	89	36	15	94
91	15	42	23	- 56
82	43	95	67	62
47	78	84	95	- 89
66	21	29	82	17
73	94	54	76	46
59	57	16	53	- 25
446	397	356	411	49

除 法

基數ニテ割ルコト 1.

基本問題

- (1) $132 \div 3 = 44$ (3) $1776 \div 2 = 888$
 (2) $536 \div 8 = 67$ (4) $2136 \div 6 = 356$

練習問題

- (1) $136 \div 2 = 68$ (11) $1998 \div 6 = 333$
 (2) $492 \div 6 = 82$ (12) $2936 \div 4 = 734$
 (3) $651 \div 7 = 93$ (13) $1152 \div 2 = 576$
 (4) $255 \div 3 = 85$ (14) $4571 \div 7 = 653$
 (5) $288 \div 6 = 48$ (15) $2607 \div 3 = 869$
 (6) $504 \div 8 = 63$ (16) $3024 \div 8 = 378$
 (7) $308 \div 4 = 77$ (17) $3104 \div 4 = 776$
 (8) $612 \div 9 = 68$ (18) $7182 \div 9 = 798$
 (9) $316 \div 4 = 79$ (19) $2208 \div 6 = 368$
 (10) $532 \div 7 = 76$ (20) $6279 \div 7 = 897$

基數ニテ割ルコト 2.

基本問題

- (1) $168 \div 2 = 84$ (3) $3678 \div 6 = 613$
 (2) $72 \div 6 = 12$ (4) $801 \div 3 = 267$

練習問題

- (1) $126 \div 2 = 63$ (11) $2256 \div 3 = 752$
 (2) $567 \div 7 = 81$ (12) $7528 \div 8 = 941$
 (3) $208 \div 4 = 52$ (13) $1764 \div 2 = 882$
 (4) $328 \div 8 = 41$ (14) $3568 \div 4 = 892$
 (5) $546 \div 6 = 91$ (15) $4272 \div 6 = 712$
 (6) $84 \div 3 = 28$ (16) $2560 \div 5 = 512$
 (7) $162 \div 9 = 18$ (17) $1875 \div 3 = 625$
 (8) $96 \div 2 = 48$ (18) $1134 \div 9 = 126$
 (9) $75 \div 5 = 15$ (19) $882 \div 7 = 126$
 (10) $112 \div 4 = 28$ (20) $974 \div 2 = 487$

除 法

基數ニテ割ルコト 3.

基本問題

- (1) $726 \div 2 = 363$ (3) $2812 \div 4 = 703$
 (2) $848 \div 4 = 212$ (4) $3507 \div 7 = 501$

練習問題

- (1) $849 \div 3 = 283$ (11) $1602 \div 2 = 801$
 (2) $917 \div 7 = 131$ (12) $3654 \div 6 = 609$
 (3) $705 \div 5 = 141$ (13) $4256 \div 7 = 608$
 (4) $1684 \div 2 = 842$ (14) $1503 \div 3 = 501$
 (5) $3248 \div 4 = 812$ (15) $2036 \div 4 = 509$
 (6) $896 \div 8 = 112$ (16) $6327 \div 9 = 703$
 (7) $684 \div 6 = 114$ (17) $608 \div 2 = 304$
 (8) $684 \div 2 = 342$ (18) $856 \div 8 = 107$
 (9) $999 \div 9 = 111$ (19) $408 \div 4 = 102$
 (10) $936 \div 3 = 312$ (20) $2510 \div 5 = 502$

事實問題

或學校ノ尋常科ノ生徒ハ全部デ1254人デアアル。一學年ノ平均ハ何人カ。
 答 209人

加 減 法 練 習

制限時間 一問題 35秒

(1)	(2)	(3)	(4)	(5)
圓 錢	圓 錢	圓 錢	圓 錢	圓 錢
3 13	4 26	7 21	2 63	8 49
1 46	8 34	4 83	9 01	- 2 65
2 98	9 78	6 37	6 24	5 70
7 61	1 89	9 08	3 75	- 4 92
8 56	2 95	8 59	2 30	7 83
6 38	7 52	2 46	8 92	2 10
4 79	6 46	3 60	7 58	- 5 42
34 91	41 20	42 14	40 43	11 13

乘法

2位3位ノ整数ヲ掛ケルコト 1.

基本問題

(1) $54 \times 3 = 162$ (3) $23 \times 4 = 92$
 (2) $352 \times 7 = 2464$ (4) $608 \times 5 = 3040$

練習問題

(1) $48 \times 4 = 192$ (11) $82 \times 3 = 246$
 (2) $67 \times 2 = 134$ (12) $41 \times 6 = 246$
 (3) $76 \times 8 = 608$ (13) $34 \times 2 = 68$
 (4) $87 \times 6 = 522$ (14) $28 \times 4 = 112$
 (5) $38 \times 9 = 342$ (15) $17 \times 7 = 119$
 (6) $546 \times 3 = 1638$ (16) $634 \times 3 = 1902$
 (7) $759 \times 5 = 3795$ (17) $176 \times 8 = 1408$
 (8) $676 \times 4 = 2704$ (18) $302 \times 4 = 1208$
 (9) $873 \times 7 = 6111$ (19) $804 \times 9 = 7236$
 (10) $389 \times 6 = 2334$ (20) $608 \times 5 = 3040$

2位3位ノ整数ヲ掛ケルコト 2.

基本問題

(1) $84 \times 34 = 2856$ (3) $34 \times 28 = 952$
 (2) $53 \times 15 = 795$ (4) $84 \times 69 = 5796$

練習問題

(1) $44 \times 43 = 1892$ (11) $73 \times 68 = 4964$
 (2) $32 \times 77 = 2464$ (12) $42 \times 78 = 3276$
 (3) $63 \times 47 = 2961$ (13) $37 \times 42 = 1554$
 (4) $78 \times 23 = 1794$ (14) $48 \times 16 = 768$
 (5) $23 \times 86 = 1978$ (15) $86 \times 24 = 2064$
 (6) $71 \times 21 = 1491$ (16) $24 \times 74 = 1776$
 (7) $93 \times 73 = 6789$ (17) $31 \times 96 = 2976$
 (8) $27 \times 62 = 1674$ (18) $46 \times 38 = 1748$
 (9) $15 \times 13 = 195$ (19) $53 \times 87 = 4611$
 (10) $43 \times 81 = 3483$ (20) $48 \times 61 = 2928$

乘法

2位ノ整数ヲ掛ケルコト 3.

基本問題

(1) $48 \times 26 = 1248$ (3) $51 \times 26 = 1326$
 (2) $69 \times 47 = 3243$ (4) $36 \times 75 = 2700$

練習問題

(1) $37 \times 57 = 2109$ (11) $52 \times 96 = 4992$
 (2) $74 \times 29 = 2146$ (12) $85 \times 23 = 1955$
 (3) $86 \times 96 = 8256$ (13) $32 \times 56 = 1792$
 (4) $79 \times 87 = 6873$ (14) $92 \times 58 = 5336$
 (5) $48 \times 73 = 3504$ (15) $56 \times 84 = 4704$
 (6) $78 \times 18 = 1404$ (16) $82 \times 95 = 7790$
 (7) $16 \times 88 = 1408$ (17) $45 \times 28 = 1260$
 (8) $68 \times 78 = 5304$ (18) $64 \times 75 = 4800$
 (9) $29 \times 49 = 1421$ (19) $25 \times 36 = 900$
 (10) $69 \times 38 = 2622$ (20) $72 \times 45 = 3240$

事實問題

或學校ノ五年生ノ學級費ハ一ヶ月25錢デアル。生徒48人ノ學級デハ一ヶ月ノ學級費ハ幾ラ集マルカ。 答 12圓

加減法練習

制限時間 一問題 45秒

(1)	(2)	(3)	(4)	(5)
圓 錢	圓 錢	圓 錢	圓 錢	圓 錢
63 19	86 29	41 37	19 46	79 40
27 43	19 82	32 56	48 19	68 23
98 67	45 16	76 09	70 68	- 92 96
31 96	63 43	68 12	92 54	85 82
76 85	72 67	97 85	85 71	- 10 49
49 13	28 92	52 60	44 32	47 18
63 42	91 88	49 72	36 49	- 26 73
410 65	408 17	418 31	397 39	150 45

除 法

2位ノ整数ニテ割ルコト 1.

基本問題

- (1) $132 \div 22 = 6$ (3) $189 \div 21 = 9$
 (2) $441 \div 63 = 7$ (4) $78 \div 39 = 2$

練習問題

- (1) $154 \div 22 = 7$ (11) $287 \div 41 = 7$
 (2) $576 \div 72 = 8$ (12) $189 \div 63 = 3$
 (3) $170 \div 34 = 5$ (13) $128 \div 32 = 4$
 (4) $402 \div 67 = 6$ (14) $568 \div 71 = 8$
 (5) $184 \div 46 = 4$ (15) $306 \div 51 = 6$
 (6) $196 \div 98 = 2$ (16) $102 \div 34 = 3$
 (7) $448 \div 56 = 8$ (17) $56 \div 28 = 2$
 (8) $267 \div 89 = 3$ (18) $72 \div 36 = 2$
 (9) $315 \div 45 = 7$ (19) $65 \div 65 = 1$
 (10) $204 \div 34 = 6$ (20) $86 \div 43 = 2$

2位ノ整数ニテ割ルコト 2.

基本問題

- (1) $156 \div 39 = 4$ (3) $196 \div 28 = 7$
 (2) $45 \div 15 = 3$ (4) $96 \div 16 = 6$

練習問題

- (1) $161 \div 23 = 7$ (11) $145 \div 29 = 5$
 (2) $216 \div 36 = 6$ (12) $182 \div 26 = 7$
 (3) $360 \div 45 = 8$ (13) $273 \div 39 = 7$
 (4) $108 \div 27 = 4$ (14) $189 \div 27 = 7$
 (5) $544 \div 68 = 8$ (15) $174 \div 29 = 6$
 (6) $259 \div 37 = 7$ (16) $54 \div 18 = 3$
 (7) $360 \div 45 = 8$ (17) $91 \div 13 = 7$
 (8) $413 \div 59 = 7$ (18) $85 \div 17 = 5$
 (9) $30 \div 15 = 2$ (19) $72 \div 18 = 4$
 (10) $56 \div 14 = 4$ (20) $95 \div 19 = 5$

除 法

2位ノ整数ニテ割ルコト 3.

基本問題

- (1) $108 \div 12 = 9$ (3) $312 \div 39 = 8$
 (2) $414 \div 46 = 9$ (4) $108 \div 18 = 6$

練習問題

- (1) $117 \div 13 = 9$ (11) $104 \div 13 = 8$
 (2) $405 \div 45 = 9$ (12) $208 \div 26 = 8$
 (3) $216 \div 24 = 9$ (13) $136 \div 17 = 8$
 (4) $711 \div 79 = 9$ (14) $304 \div 38 = 8$
 (5) $144 \div 16 = 9$ (15) $232 \div 29 = 8$
 (6) $333 \div 37 = 9$ (16) $203 \div 29 = 7$
 (7) $801 \div 89 = 9$ (17) $105 \div 15 = 7$
 (8) $531 \div 59 = 9$ (18) $126 \div 18 = 7$
 (9) $252 \div 28 = 9$ (19) $114 \div 19 = 6$
 (10) $612 \div 68 = 9$ (20) $102 \div 17 = 6$

事實問題

友人ト14人デ慰問袋ヲ作ツタ。費用ハミナデ1圓12錢 ~~カ~~ツタトイ
 フ一人幾ラツ、出セバヨイカ。 答 _____

制限時間8分 統計算練習

(1)	(2)	(3)	(4)	横列合計
圓 錢	圓 錢	圓 錢	圓 錢	圓 錢
1342	4389	7462	6254	19447
7789	8705	3934	3802	24230
3975	2634	2587	4923	14119
6526	9871	9413	8576	34386
9463	1426	1368	1051	13308
8090	3690	4091	5749	21620
2672	5283	6752	9230	23937
39857	35998	35607	39585	151047

除 法

2位ノ整数ニテ割ルコト 4.

基本問題

(1) $1892 \div 43 = 44$ (3) $1134 \div 54 = 21$
 (2) $1612 \div 62 = 26$ (4) $378 \div 21 = 18$

練習問題

(1) $1794 \div 78 = 23$ (11) $4374 \div 54 = 81$
 (2) $2961 \div 63 = 47$ (12) $4131 \div 81 = 51$
 (3) $4611 \div 53 = 87$ (13) $1536 \div 48 = 32$
 (4) $2064 \div 86 = 24$ (14) $896 \div 32 = 28$
 (5) $5550 \div 74 = 75$ (15) $690 \div 46 = 15$
 (6) $2646 \div 42 = 63$ (16) $975 \div 75 = 13$
 (7) $1197 \div 21 = 57$ (17) $884 \div 34 = 26$
 (8) $1175 \div 47 = 25$ (18) $492 \div 12 = 41$
 (9) $5796 \div 92 = 63$ (19) $756 \div 36 = 21$
 (10) $1350 \div 75 = 18$ (20) $979 \div 89 = 11$

2位ノ整数ニテ割ルコト 5.

基本問題

(1) $1536 \div 32 = 48$ (3) $3534 \div 38 = 93$
 (2) $1848 \div 28 = 66$ (4) $1836 \div 27 = 68$

練習問題

(1) $2162 \div 46 = 47$ (11) $6256 \div 68 = 92$
 (2) $3744 \div 78 = 48$ (12) $2208 \div 23 = 96$
 (3) $4118 \div 58 = 71$ (13) $3663 \div 37 = 99$
 (4) $3024 \div 63 = 48$ (14) $6831 \div 69 = 99$
 (5) $7488 \div 96 = 78$ (15) $4032 \div 48 = 84$
 (6) $1161 \div 27 = 43$ (16) $3344 \div 38 = 88$
 (7) $2736 \div 38 = 72$ (17) $1248 \div 16 = 78$
 (8) $1456 \div 26 = 56$ (18) $2652 \div 39 = 68$
 (9) $1742 \div 26 = 67$ (19) $1653 \div 29 = 57$
 (10) $1914 \div 29 = 66$ (20) $1083 \div 19 = 57$

加 法 練 習

次ノ同番號ノ金高ノ合計ヲ求メヨ。

(3) 6.15	(1) 89.00	(2) 67.36
(1) 20.38	(2) 6.07	(1) $.81$
(2) 8.04	(3) 14.20	(3) 8.09
(1) 79.82	(2) 90.03	(3) $.70$
(3) 63.40	(1) 7.81	(2) 99.09
(2) 7.95	(3) 52.06	(1) 54.00
(2) 84.29	(1) 38.30	(1) 1.95
(3) 8.04	(3) 25.08	(2) $.46$
(1) 10.30	(2) 9.00	(3) 73.60
		(1) 302.37
		答 (2) 372.29
		(3) 251.32

統 計 算 練 習

制限時間 15分

(1)	(2)	(3)	(4)	横列合計
圓 錢	圓 錢	圓 錢	圓 錢	圓 錢
53.28	2.34	68.43	5.32	129.37
9.84	38.76	3.02	46.79	98.41
5.13	91.91	5.27	2.08	104.39
6.47	7.80	26.86	79.64	120.77
30.62	8.21	1.45	38.12	152.31
2.98	5.48	67.30	1.36	77.12
51.81	24.81	9.23	4.75	90.60
74.34	79.04	84.97	73.98	312.33
8.02	3.47	32.81	17.80	62.10
95.29	6.78	7.42	5.12	114.61
337.78	342.51	306.76	274.96	1262.01

加 減 法 練 習

制限時間 一問題 35秒

(1)	(2)	(3)	(4)	(5)
圓 錢	圓 錢	圓 錢	圓 錢	圓 錢
9 57	4 92	5 29	6 68	9 64
1 23	8 15	1 63	2 19	- 4 73
4 81	6 95	8 05	3 54	8 06
3 42	2 43	7 36	2 07	- 1 95
6 67	7 09	9 14	8 94	- 6 75
5 38	5 64	6 73	7 58	- 2 38
2 74	8 76	4 95	1 92	7 94
33 82	43 94	43 15	32 92	9 83

制限時間 一問題 40秒

(6)	(7)	(8)	(9)	(10)
圓 錢	圓 錢	圓 錢	圓 錢	圓 錢
69 23	26 81	71 68	31 87	62 78
81 54	35 53	53 19	56 76	80 50
27 69	15 07	62 17	21 04	- 31 14
48 19	72 39	30 65	38 23	- 73 96
67 29	49 62	78 93	60 59	61 65
53 64	80 53	46 75	15 46	- 28 07
347 58	279 95	343 37	223 95	71 76

制限時間 一問題 40秒

(11)	(12)	(13)	(14)	(15)
圓 錢	圓 錢	圓 錢	圓 錢	圓 錢
126 72	632 09	381 46	739 34	899 50
348 91	875 43	720 93	162 86	- 372 64
261 35	266 89	163 74	307 95	506 37
721 54	854 32	547 50	951 27	- 142 95
567 38	137 94	629 31	568 03	- 670 83
2025 90	2766 67	2442 94	2729 45	219 45

乘 除 法 練 習

制限時間 一問題 9秒

- (1) $387 \times 6 = 2322$
- (2) $943 \times 2 = 1886$
- (3) $214 \times 8 = 1712$
- (4) $365 \times 9 = 3285$
- (5) $724 \times 3 = 2172$
- (6) $5 \times 735 = 3675$
- (7) $4 \times 476 = 1904$
- (8) $7 \times 893 = 6251$
- (9) $6 \times 455 = 2730$
- (10) $3 \times 216 = 648$

制限時間 一問題 9秒

- (1) $5775 \div 7 = 825$
- (2) $3008 \div 8 = 376$
- (3) $2232 \div 6 = 372$
- (4) $6957 \div 9 = 773$
- (5) $4165 \div 5 = 833$
- (6) $1896 \div 6 = 316$
- (7) $756 \div 4 = 189$
- (8) $1374 \div 2 = 687$
- (9) $4298 \div 7 = 614$
- (10) $816 \div 3 = 272$

制限時間 一問題 12秒

- (11) $46 \times 63 = 2898$
- (12) $34 \times 88 = 2992$
- (13) $74 \times 36 = 2664$
- (14) $27 \times 37 = 999$
- (15) $53 \times 24 = 1272$
- (16) $48 \times 76 = 3648$
- (17) $95 \times 37 = 3515$
- (18) $63 \times 84 = 5292$
- (19) $74 \times 46 = 3404$
- (20) $38 \times 97 = 3686$
- (21) $46 \times 38 = 1748$
- (22) $27 \times 43 = 1161$
- (23) $63 \times 58 = 3654$
- (24) $74 \times 35 = 2590$
- (25) $28 \times 51 = 1428$

制限時間 一問題 12秒

- (11) $1386 \div 63 = 22$
- (12) $2784 \div 87 = 32$
- (13) $1564 \div 46 = 34$
- (14) $4575 \div 75 = 61$
- (15) $782 \div 23 = 34$
- (16) $1972 \div 34 = 58$
- (17) $5568 \div 96 = 58$
- (18) $864 \div 48 = 18$
- (19) $2574 \div 39 = 66$
- (20) $736 \div 16 = 46$
- (21) $2484 \div 27 = 92$
- (22) $6633 \div 67 = 99$
- (23) $3174 \div 46 = 69$
- (24) $3293 \div 37 = 89$
- (25) $2233 \div 29 = 77$

乗法・除法

基数ヲ掛ケルコト 3.

基数ニテ割ルコト 4.

基本問題

- (1) $4658 \times 3 = 13974$ (3) $39475 \div 5 = 7895$
- (2) $67145 \times 8 = 537160$ (4) $432705 \div 7 = 61815$

練習問題

- (1) $7629 \times 6 = 45774$ (11) $18532 \div 4 = 4633$
- (2) $8436 \times 7 = 59052$ (12) $46403 \div 7 = 6629$
- (3) $4768 \times 2 = 9536$ (13) $14272 \div 8 = 1784$
- (4) $1075 \times 8 = 8600$ (14) $7694 \div 2 = 3847$
- (5) $3 \times 6247 = 18741$ (15) $8346 \div 3 = 2782$
- (6) $48736 \times 4 = 194944$ (16) $223104 \div 6 = 37184$
- (7) $75468 \times 6 = 452808$ (17) $631472 \div 8 = 78934$
- (8) $81732 \times 3 = 245196$ (18) $119264 \div 4 = 29816$
- (9) $40708 \times 5 = 203540$ (19) $94515 \div 5 = 18903$
- (10) $7 \times 61038 = 427266$ (20) $74986 \div 2 = 37493$

2位ノ整数ヲ掛ケルコト 4.

基本問題

- (1) $333 \times 84 = 27972$ (3) $308 \times 46 = 14168$
- (2) $486 \times 76 = 36936$ (4) $624 \times 51 = 31824$

練習問題

- (1) $333 \times 74 = 24642$ (11) $706 \times 84 = 59304$
- (2) $476 \times 63 = 29988$ (12) $408 \times 67 = 27336$
- (3) $847 \times 34 = 28798$ (13) $605 \times 43 = 26015$
- (4) $268 \times 86 = 23048$ (14) $832 \times 82 = 68224$
- (5) $574 \times 48 = 27552$ (15) $263 \times 34 = 8942$
- (6) $639 \times 75 = 47925$ (16) $786 \times 18 = 14148$
- (7) $486 \times 93 = 45198$ (17) $643 \times 51 = 32793$
- (8) $64 \times 736 = 47104$ (18) $21 \times 238 = 4998$
- (9) $38 \times 547 = 20786$ (19) $74 \times 162 = 11988$
- (10) $76 \times 364 = 27664$ (20) $36 \times 501 = 18036$

乗法・除法

2位ノ整数ヲ掛ケルコト 5.

基本問題

- (1) $7847 \times 34 = 266798$ (3) $2158 \times 32 = 69056$
- (2) $6403 \times 56 = 358568$ (4) $8034 \times 29 = 232986$

練習問題

- (1) $3874 \times 46 = 178204$ (11) $4632 \times 36 = 166752$
- (2) $7469 \times 38 = 283822$ (12) $2174 \times 42 = 91308$
- (3) $6387 \times 74 = 472638$ (13) $6028 \times 17 = 102476$
- (4) $4753 \times 65 = 308945$ (14) $3261 \times 25 = 81525$
- (5) $9246 \times 87 = 804402$ (15) $8403 \times 72 = 605016$
- (6) $5698 \times 42 = 239316$ (16) $1894 \times 38 = 71972$
- (7) $8405 \times 56 = 470680$ (17) $4063 \times 21 = 85323$
- (8) $76 \times 3624 = 275424$ (18) $36 \times 4235 = 152460$
- (9) $35 \times 8467 = 296345$ (19) $72 \times 8143 = 586296$
- (10) $64 \times 5086 = 325504$ (20) $14 \times 7024 = 98336$

2位ノ整数ニテ割ルコト 5.

基本問題

- (1) $27972 \div 84 = 333$ (3) $38364 \div 46 = 834$
- (2) $30651 \div 51 = 601$ (4) $6264 \div 18 = 348$

練習問題

- (1) $24642 \div 74 = 333$ (11) $40227 \div 53 = 759$
- (2) $29952 \div 52 = 576$ (12) $16184 \div 68 = 238$
- (3) $47502 \div 63 = 754$ (13) $28268 \div 37 = 764$
- (4) $34498 \div 94 = 367$ (14) $37076 \div 46 = 806$
- (5) $17784 \div 76 = 234$ (15) $6624 \div 24 = 276$
- (6) $20512 \div 32 = 641$ (16) $40635 \div 43 = 945$
- (7) $5103 \div 21 = 243$ (17) $55888 \div 56 = 998$
- (8) $7616 \div 34 = 224$ (18) $31430 \div 35 = 898$
- (9) $11658 \div 87 = 134$ (19) $3024 \div 28 = 108$
- (10) $40902 \div 51 = 802$ (20) $41262 \div 46 = 897$

除 法 ・ 乗 法

2 位ノ整数ニテ割ルコト 6.

基本問題

- (1) $156651 \div 47 = 3333$ (3) $510948 \div 76 = 6723$
 (2) $144072 \div 36 = 4002$ (4) $67416 \div 24 = 2809$

練習問題

- (1) $159984 \div 48 = 3333$ (11) $359688 \div 56 = 6423$
 (2) $395412 \div 83 = 4764$ (12) $266764 \div 34 = 7846$
 (3) $135688 \div 56 = 2423$ (13) $304046 \div 67 = 4538$
 (4) $412928 \div 64 = 6452$ (14) $149727 \div 29 = 5163$
 (5) $486954 \div 78 = 6243$ (15) $55169 \div 43 = 1283$
 (6) $349515 \div 81 = 4315$ (16) $472531 \div 59 = 8009$
 (7) $78272 \div 32 = 2446$ (17) $251076 \div 28 = 8967$
 (8) $90468 \div 63 = 1436$ (18) $627762 \div 69 = 9098$
 (9) $138966 \div 23 = 6042$ (19) $48366 \div 18 = 2687$
 (10) $276092 \div 46 = 6002$ (20) $50908 \div 21 = 2424$

3 位ノ整数ヲ掛ケルコト

基本問題

- (1) $432 \times 687 = 296784$ (3) $746 \times 308 = 229768$
 (2) $314 \times 243 = 76302$ (4) $501 \times 604 = 302604$

練習問題

- (1) $648 \times 364 = 235872$ (11) $836 \times 704 = 588544$
 (2) $376 \times 758 = 285008$ (12) $479 \times 306 = 146574$
 (3) $864 \times 436 = 376704$ (13) $348 \times 402 = 139896$
 (4) $437 \times 875 = 382375$ (14) $605 \times 937 = 566885$
 (5) $785 \times 546 = 428610$ (15) $906 \times 248 = 224688$
 (6) $924 \times 362 = 334488$ (16) $204 \times 362 = 73848$
 (7) $563 \times 913 = 514019$ (17) $703 \times 804 = 565212$
 (8) $247 \times 364 = 89908$ (18) $308 \times 705 = 217140$
 (9) $614 \times 127 = 77978$ (19) $501 \times 406 = 203406$
 (10) $328 \times 253 = 82984$ (20) $106 \times 203 = 21518$

除 法

3 位ノ整数ニテ割ルコト

基本問題

- (1) $1935 \div 645 = 3$ (3) $13611 \div 349 = 39$
 (2) $31824 \div 408 = 78$ (4) $387345 \div 735 = 527$

練習問題

- (1) $1852 \div 463 = 4$ (11) $17101 \div 349 = 49$
 (2) $5887 \div 841 = 7$ (12) $26781 \div 339 = 79$
 (3) $927 \div 309 = 3$ (13) $7956 \div 117 = 68$
 (4) $4102 \div 586 = 7$ (14) $16422 \div 238 = 69$
 (5) $2072 \div 296 = 7$ (15) $8526 \div 147 = 58$
 (6) $27896 \div 634 = 44$ (16) $296784 \div 687 = 432$
 (7) $39748 \div 523 = 76$ (17) $402303 \div 501 = 803$
 (8) $37012 \div 487 = 76$ (18) $218376 \div 324 = 674$
 (9) $23184 \div 276 = 84$ (19) $422334 \div 486 = 869$
 (10) $9552 \div 398 = 24$ (20) $127588 \div 167 = 764$

事實問題

或學校ノ生徒數ハ 963 人デ、ソノ貯金總額ハ 7183 圓 98 錢デアル。一人平均イクラノ貯金高トナルカ。

答 7 圓 46 錢

加 減 法 練 習

制限時間 一問題 53秒

(1)	(2)	(3)	(4)	(5)
圓 錢	圓 錢	圓 錢	圓 錢	圓 錢
649 18	784 51	917 65	627 08	834 69
385 64	619 28	342 87	483 51	709 35
714 25	523 74	709 18	159 24	-382 70
423 91	478 96	534 72	941 30	-653 52
567 48	261 53	871 06	367 98	178 49
278 39	947 35	490 83	708 42	496 85
932 74	352 87	284 51	829 15	-510 24
3951 59	3968 24	4150 82	4116 68	6729 2

乗 法 ・ 除 法

基本問題

- (1) $4270 \times 3 = 12810$ (3) $26280 \div 30 = 876$
 (2) $560 \times 480 = 268800$ (4) $105800 \div 460 = 230$

練習問題

- (1) $3280 \times 2 = 6560$
 (2) $6470 \times 4 = 25880$
 (3) $8 \times 3140 = 25120$
 (4) $320 \times 58 = 18560$
 (5) $760 \times 62 = 47120$
 (6) $24 \times 170 = 4080$
 (7) $460 \times 380 = 174800$
 (8) $820 \times 540 = 442800$
 (9) $4700 \times 6300 = 29610000$
 (10) $7500 \times 1800 = 13500000$
 (11) $21560 \div 40 = 539$
 (12) $36190 \div 70 = 517$
 (13) $40020 \div 87 = 460$
 (14) $24180 \div 62 = 390$
 (15) $29040 \div 24 = 1210$
 (16) $35640 \div 810 = 44$
 (17) $348800 \div 436 = 800$
 (18) $2079400 \div 562 = 3700$
 (19) $1015000 \div 3500 = 290$
 (20) $42120000 \div 7800 = 5400$

事實問題

縦 48m 横 630m ノ矩形ノ土地ガアル。今コレト等シイ面積ガ縦ヲ 360m トスルコト、横ヲ何m ニスレバヨイカ。 答 84m

乗 法

小數ヲ含ムモノ

基本問題

- (1) $7.34 \times 6 = 44.04$ (3) $6.48 \times 0.3 = 1.944$
 (2) $0.62 \times 35 = 21.7$ (4) $0.076 \times 2.5 = 0.19$

練習問題

- (1) $6.85 \times 4 = 27.4$ (16) $7.62 \times 0.8 = 6.096$
 (2) $37.8 \times 6 = 226.8$ (17) $3.5 \times 0.76 = 2.66$
 (3) $4.6 \times 75 = 345$ (18) $46.9 \times 0.23 = 10.787$
 (4) $75.2 \times 30 = 2256$ (19) $2.75 \times 0.6 = 1.65$
 (5) $9.75 \times 268 = 2613$ (20) $68.3 \times 0.45 = 30.735$
 (6) $60.8 \times 475 = 28880$ (21) $8.06 \times 0.375 = 3.0225$
 (7) $6 \times 9.02 = 54.12$ (22) $39.4 \times 0.05 = 1.97$
 (8) $24 \times 3.86 = 92.64$ (23) $7.5 \times 0.028 = 0.21$
 (9) $8.7 \times 29.4 = 255.78$ (24) $5.08 \times 0.075 = 0.381$
 (10) $4.25 \times 60.8 = 258.4$ (25) $0.64 \times 1.8 = 1.152$
 (11) $0.36 \times 47 = 16.92$ (26) $0.072 \times 3.6 = 0.2592$
 (12) $0.78 \times 80 = 62.4$ (27) $0.48 \times 70.5 = 33.84$
 (13) $0.694 \times 265 = 183.91$ (28) $0.36 \times 0.82 = 0.2952$
 (14) $48 \times 0.57 = 27.36$ (29) $0.694 \times 0.5 = 0.347$
 (15) $326 \times 0.875 = 285.25$ (30) $0.82 \times 0.475 = 0.3895$

事實問題

- (1) 或學級ノ生徒數ハ54人デ、體重ノ平均ハ30.5kgデアアル。コノ學級ノ生徒全體ノ目方ハドレダケカ。 答 1647kg
- (2) 或村ノ耕地面積ハ937.5haデ、コノ面積ニ對スル田ノ面積歩合ハ6割4分デアアル。田ノ面積ハ幾ヘクタールデアアルカ。 答 600ha

除 法

小數ヲ含ムモノ

基本問題

(1) $9.84 \div 3 = 3.28$ (3) $8.64 \div 2.7 = 3.2$
 (2) $0.27 \div 6 = 0.045$ (4) $7 \div 0.8 = 8.75$

練習問題

(1) $28.26 \div 6 = 4.71$ (16) $91.2 \div 4.8 = 19$
 (2) $150.3 \div 9 = 16.7$ (17) $1.344 \div 2.1 = 0.64$
 (3) $78.1 \div 71 = 1.1$ (18) $378 \div 12.6 = 30$
 (4) $78.2 \div 34 = 2.3$ (19) $16.2 \div 6.48 = 2.5$
 (5) $48.72 \div 84 = 0.58$ (20) $33.11 \div 47.3 = 0.7$
 (6) $16.9 \div 20 = 0.845$ (21) $18 \div 37.5 = 0.48$
 (7) $153 \div 18 = 8.5$ (22) $0.55 \div 2.5 = 0.22$
 (8) $30 \div 125 = 0.24$ (23) $0.336 \div 9.6 = 0.035$
 (9) $73.7 \div 670 = 0.11$ (24) $0.621 \div 20.7 = 0.03$
 (10) $663.6 \div 840 = 0.79$ (25) $0.49 \div 12.5 = 0.0392$
 (11) $0.5 \div 8 = 0.0625$ (26) $5 \div 0.8 = 6.25$
 (12) $0.51 \div 6 = 0.085$ (27) $6.4 \div 0.04 = 160$
 (13) $0.7 \div 28 = 0.025$ (28) $0.84 \div 0.48 = 1.75$
 (14) $0.9 \div 75 = 0.012$ (29) $0.456 \div 0.95 = 0.48$
 (15) $0.78 \div 325 = 0.0024$ (30) $0.285 \div 0.38 = 0.75$

事實問題

(1) 或學級ノ男生徒數ハ27人デ、體重ノ合計ハ799.2kgデアル。男生徒一人ノ平均ハ何kgニナルカ。

答 29.6kg

(2) 或學校デ五年生ハ144人キル。コレハ生徒全體ノ1割5分ニ當ツテキル。生徒ハ全體デ何人カ。

答 960人

除 法

剩餘アルモノ

次ノ割算デ(1)——(10)ハ圓ノ位マデ (11)——(20)ハ錢ノ位デ求メ夫々餘リヲ出セ。

基本問題

(1) $513 \div 4 = 128 \text{ 円} - 1$ (3) $638 \div 7 = 91 \text{ 円} - 14 - 0.02$
 (2) $26.38 \div 6.7 = 3 \text{ 円} - 6.28$ (4) $746.1 \div 9.4 = 79 \text{ 円} - 37 - 0.022$

練習問題

(1) $314 \div 3 = 104 \text{ 円} - 2$ (11) $7280 \div 9 = 808 \text{ 円} - 88 - 0.08$
 (2) $3457 \div 8 = 432 \text{ 円} - 1$ (12) $896 \div 43 = 20 \text{ 円} - 33 - 0.31$
 (3) $629 \div 94 = 6 \text{ 円} - 65$ (13) $354 \div 57 = 6 \text{ 円} - 21 - 0.03$
 (4) $836 \div 57 = 14 \text{ 円} - 38$ (14) $2860 \div 680 = 4 \text{ 円} - 20 - 4.00$
 (5) $46.79 \div 13 = 3 \text{ 円} - 7.79$ (15) $574.2 \div 329 = 1 \text{ 円} - 74 - 1.74$
 (6) $67 \div 0.4 = 167 \text{ 円} - 0.20$ (16) $137 \div 0.7 = 195 \text{ 円} - 71 - 0.06$
 (7) $530 \div 7.6 = 69 \text{ 円} - 5.60$ (17) $56.29 \div 0.6 = 93 \text{ 円} - 81 - 0.004$
 (8) $397.4 \div 4.3 = 92 \text{ 円} - 1.80$ (18) $9141 \div 8.5 = 1075 \text{ 円} - 41 - 0.01$
 (9) $7810 \div 2.4 = 3254 \text{ 円} - 1.60$ (19) $657.2 \div 39.8 = 16 \text{ 円} - 51 - 0.102$
 (10) $532.65 \div 6.37 = 83 \text{ 円} - 3.94$ (20) $62.04 \div 7.26 = 8 \text{ 円} - 54 - 0.0396$

加 減 法 練 習

制限時間 一問題 50秒

(1)	(2)	(3)	(4)	(5)
圓 錢	圓 錢	圓 錢	圓 錢	圓 錢
143 27	28 93	584 64	38 42	973 64
78 92	494 57	58 92	697 81	29 83
61 54	83 26	431 57	154 96	-385 21
594 36	619 68	76 42	13 48	-146 96
856 27	34 71	768 39	542 63	- 32 49
39 91	278 32	392 68	268 74	297 81
321 84	561 67	18 74	79 25	- 58 43
2096 11	2101 14	2331 36	1795 29	678 19

除 法

剰餘アルモノ

次ノ割算ハ四捨五入ニヨツテ、錢ノ位マデ求メヨ。

基本問題

(1) $77 \div 3 = 25.67$ (3) $1.1 \div 0.6 = 1.83$
 (2) $2386.2 \div 180 = 13.26$ (4) $324.50 \div 7.3 = 44.45$

練習問題

(1) $208 \div 7 = 29.71$ (11) $1.2 \div 0.7 = 1.71$
 (2) $175 \div 8 = 21.88$ (12) $8.24 \div 0.6 = 13.73$
 (3) $276 \div 38 = 7.26$ (13) $39.15 \div 0.4 = 97.88$
 (4) $843 \div 26 = 32.42$ (14) $99.28 \div 9.2 = 10.79$
 (5) $62.3 \div 47 = 1.33$ (15) $22.49 \div 8.7 = 2.59$
 (6) $112.6 \div 690 = 0.16$ (16) $67.82 \div 5.4 = 12.56$
 (7) $158.21 \div 730 = 0.22$ (17) $36.2 \div 12.9 = 2.81$
 (8) $22.16 \div 254 = 0.09$ (18) $912.4 \div 43.8 = 20.83$
 (9) $502.3 \div 512 = 0.98$ (19) $214.32 \div 3.71 = 57.77$
 (10) $467.8 \div 367 = 1.27$ (20) $756.14 \div 6.45 = 117.23$

加 減 法 練 習

制限時間 一問題 50秒

(1)	(2)	(3)	(4)	(5)
圓 錢	圓 錢	圓 錢	圓 錢	圓 錢
346 07	41 67	679 84	102 64	46 32
91 84	760 95	35 62	539 82	810 48
937 93	34 82	471 02	80 37	- 34 60
149 38	607 39	253 91	27 48	-178 95
60 05	952 48	90 48	453 60	625 04
825 43	46 70	548 62	18 92	-493 16
76 29	385 16	62 10	842 14	- 54 73
2486 99	2829 17	2141 59	2064 97	720 40

乗 法 ・ 除 法

概 數 計 算

次ノ問題デ積又ハ商ノ概數ヲ上カラ二桁目マデ求メヨ。

基本問題

(1) $4832 \times 3 = 14000$ (3) $7638 \div 8 = 61000$
 (2) $9648 \times 264 = 25000$ (4) $59.42 \div 376 = 22000$

練習問題

(1) $28654 \times 8 = 220000$
 (2) $5268 \times 0.7 = 3600$
 (3) $592.63 \times 36 = 21000$
 (4) $837.64 \times 89.7 = 75000$
 (5) $63.928 \times 453.7 = 29000$
 (6) $8547 \div 9 = 950$
 (7) $49.58 \div 0.7 = 71$
 (8) $376.9 \div 45 = 8.4$
 (9) $30.74 \div 5.67 = 5.4$
 (10) $5646 \div 7.468 = 7.6$

事實問題

- (1) 或工場ニ職工ガ3864人キテ、日給ハ1圓25錢カラ2圓90錢デアツテ、平均ガ1圓85錢デアアル。コノ工場ノ職工ノ給金一月分ハ、約何千何百圓カ。
答約7千/百圓
- (2) 或村ノ人口ハ3135人デ小學校ノ生徒ハ678人デアアル。生徒ノ數ハ村ノ人口ノ約何割何分カ。
答約2割2分
- (3) 五年生ノ教科書ノ代ハ全體デ約1圓25錢デアアル。内地ノ五年生ノ總數ヲ約158萬人トスルト、五年生全體ノ教科書ノ代價ハ約何百何十萬圓カ。
答約/97萬圓
- (4) 七段ノ桑畠ニ桑苗ヲ植エタ。苗木ハ一段ニ1200本ノ割合デソノ代價ハ總計108圓デアツタ。苗木100本ハ約何圓何十錢カ。
答約/圓29錢

(補充問題) 加 減 法 練 習

制限時間 一問題 60秒

(1)	(2)	(3)	(4)	(5)
圓 錢	圓 錢	圓 錢	圓 錢	圓 錢
35 57	81 45	89 74	74 58	52 31
64 28	17 67	45 13	86 71	69 08
86 94	92 38	12 69	35 39	28 26
37 28	26 94	87 32	60 65	90 54
91 63	51 36	64 85	42 70	81 62
29 12	34 23	83 15	15 16	74 27
51 45	27 64	12 78	96 87	46 93
32 13	43 15	94 21	89 21	37 86
64 27	89 46	28 64	67 34	59 14
86 38	75 89	52 19	24 06	64 20
579 05	540 17	570 70	592 67	604 21

制限時間 一問題 60秒

(6)	(7)	(8)	(9)	(10)
圓 錢	圓 錢	圓 錢	圓 錢	圓 錢
63 27	92 44	43 67	13 04	62 71
87 93	- 18 67	87 23	46 29	90 24
- 95 36	- 42 96	- 62 92	89 86	- 87 86
56 25	56 52	59 89	- 30 13	- 16 49
43 57	79 45	- 13 18	- 26 42	29 80
- 28 68	- 84 83	- 42 46	97 63	53 73
- 39 21	43 79	69 67	- 78 26	- 46 28
71 94	26 21	98 23	61 90	23 09
- 64 16	- 71 64	- 24 98	- 24 88	79 83
96 82	82 96	67 51	56 17	- 35 46
192 37	163 27	282 66	205 20	153 31

加 減 法 練 習

制限時間 一問題 70秒

(11)	(12)	(13)	(14)	(15)
圓 錢	圓 錢	圓 錢	圓 錢	圓 錢
271 38	98 38	884 36	89 42	978 91
24 71	151 71	16 79	391 30	68 04
396 94	935 96	297 98	754 69	192 96
87 86	26 89	53 84	87 51	915 59
16 19	379 15	539 13	646 04	46 75
649 41	44 43	768 47	39 86	89 30
68 74	61 77	71 69	170 98	574 67
471 36	682 98	682 71	27 61	653 23
182 62	728 52	97 83	318 75	37 56
26 98	64 68	16 46	65 16	80 45
2196 19	3174 47	3429 26	2591 32	3637 46

制限時間 一問題 70秒

(16)	(17)	(18)	(19)	(20)
圓 錢	圓 錢	圓 錢	圓 錢	圓 錢
318 92	859 63	91 83	72 10	288 92
267 59	284 82	154 17	368 52	819 10
- 91 35	- 16 19	486 42	- 91 69	- 95 28
- 34 76	595 45	629 69	- 84 78	- 86 71
976 93	- 83 64	- 38 78	707 91	27 09
- 459 87	79 86	71 24	- 623 64	- 652 48
21 46	- 638 23	942 92	50 16	73 62
- 194 65	261 97	- 65 86	246 87	407 26
83 48	42 56	- 196 47	- 631 92	- 124 07
42 81	27 49	87 62	64 07	46 93
930 56	1413 72	2162 78	77 60	704 38

乘法練習

制限時間 一問題 27秒

- (1) $746 \times 653 = \underline{487138}$ (11) $6340 \times 3 = \underline{19020}$
- (2) $932 \times 198 = \underline{184536}$ (12) $7960 \times 5 = \underline{39800}$
- (3) $604 \times 432 = \underline{260928}$ (13) $8 \times 2560 = \underline{20480}$
- (4) $291 \times 761 = \underline{221451}$ (14) $470 \times 63 = \underline{29610}$
- (5) $425 \times 379 = \underline{161075}$ (15) $920 \times 84 = \underline{77280}$
- (6) $853 \times 917 = \underline{782201}$ (16) $35 \times 790 = \underline{27650}$
- (7) $189 \times 504 = \underline{95256}$ (17) $860 \times 420 = \underline{361200}$
- (8) $368 \times 925 = \underline{340400}$ (18) $720 \times 580 = \underline{417600}$
- (9) $817 \times 286 = \underline{233662}$ (19) $4900 \times 1700 = \underline{8330000}$
- (10) $501 \times 842 = \underline{421842}$ (20) $6300 \times 9600 = \underline{60480000}$

除法練習

制限時間 一問題 27秒

- (1) $216811 \div 659 = \underline{329}$ (11) $23460 \div 60 = \underline{391}$
- (2) $385632 \div 824 = \underline{468}$ (12) $65520 \div 90 = \underline{728}$
- (3) $555840 \div 965 = \underline{576}$ (13) $20280 \div 78 = \underline{260}$
- (4) $191642 \div 281 = \underline{682}$ (14) $35910 \div 63 = \underline{570}$
- (5) $26676 \div 108 = \underline{247}$ (15) $17280 \div 48 = \underline{360}$
- (6) $709042 \div 794 = \underline{893}$ (16) $21080 \div 340 = \underline{62}$
- (7) $188136 \div 536 = \underline{351}$ (17) $787200 \div 984 = \underline{800}$
- (8) $129162 \div 309 = \underline{418}$ (18) $3773600 \div 712 = \underline{5300}$
- (9) $587702 \div 643 = \underline{914}$ (19) $1593000 \div 2700 = \underline{590}$
- (10) $61204 \div 572 = \underline{107}$ (20) $30550000 \div 6500 = \underline{4700}$

乘法練習

- (21) $43.7 \times 8 = \underline{349.6}$ (31) $6.4 \times 0.85 = \underline{5.44}$
- (22) $6.9 \times 23 = \underline{158.7}$ (32) $37.8 \times 0.46 = \underline{17.388}$
- (23) $8.05 \times 426 = \underline{3429.3}$ (33) $5.24 \times 0.73 = \underline{3.8252}$
- (24) $37.8 \times 740 = \underline{27972}$ (34) $7.06 \times 0.625 = \underline{4.4125}$
- (25) $56 \times 9.63 = \underline{539.28}$ (35) $4.5 \times 0.064 = \underline{0.288}$
- (26) $4.8 \times 51.7 = \underline{248.16}$ (36) $2.98 \times 0.075 = \underline{0.2235}$
- (27) $6.23 \times 49.8 = \underline{310.254}$ (37) $0.36 \times 2.8 = \underline{1.008}$
- (28) $0.76 \times 34 = \underline{25.84}$ (38) $0.075 \times 9.6 = \underline{0.72}$
- (29) $0.284 \times 619 = \underline{175.796}$ (39) $0.62 \times 0.38 = \underline{0.2356}$
- (30) $758 \times 0.625 = \underline{473.75}$ (40) $0.84 \times 0.725 = \underline{0.609}$

除法練習

- (21) $25.76 \div 7 = \underline{3.68}$ (31) $65.52 \div 8.4 = \underline{7.8}$
- (22) $13.68 \div 24 = \underline{0.57}$ (32) $222 \div 59.2 = \underline{3.75}$
- (23) $709.8 \div 91 = \underline{7.8}$ (33) $34.02 \div 48.6 = \underline{0.7}$
- (24) $21 \div 56 = \underline{0.375}$ (34) $0.11 \div 2.5 = \underline{0.044}$
- (25) $60 \div 125 = \underline{0.48}$ (35) $0.252 \div 1.5 = \underline{0.168}$
- (26) $266.4 \div 360 = \underline{0.74}$ (36) $0.475 \div 62.5 = \underline{0.0076}$
- (27) $0.7 \div 8 = \underline{0.0875}$ (37) $3 \div 0.8 = \underline{3.75}$
- (28) $0.25 \div 4 = \underline{0.0625}$ (38) $0.72 \div 0.03 = \underline{24}$
- (29) $0.54 \div 75 = \underline{0.0072}$ (39) $0.208 \div 0.64 = \underline{0.325}$
- (30) $0.21 \div 336 = \underline{0.000625}$ (40) $0.282 \div 0.75 = \underline{0.376}$

除 法 練 習

次ノ割算デ(41)―(50)ハ圓ノ位マデ、(51)―(60)ハ錢ノ位マデ求メ。

夫々餘リヲ出セ。

- | | |
|--|--|
| (41) $468 \div 7 = \underline{66-6}$ | (51) $169 \div 3 = \underline{56.33-0.01}$ |
| (42) $2174 \div 6 = \underline{362-2}$ | (52) $394 \div 78 = \underline{5.05-0.10}$ |
| (43) $815 \div 34 = \underline{23-33}$ | (53) $276 \div 43 = \underline{6.41-0.37}$ |
| (44) $392 \div 97 = \underline{4-4}$ | (54) $4560 \div 820 = \underline{5.56-0.80}$ |
| (45) $73.45 \div 16 = \underline{4-9.45}$ | (55) $781.5 \div 516 = \underline{1.51-2.34}$ |
| (46) $86 \div 0.3 = \underline{286-0.20}$ | (56) $85 \div 0.6 = \underline{141.66-0.004}$ |
| (47) $690 \div 4.2 = \underline{164-1.20}$ | (57) $34.62 \div 0.9 = \underline{38.46-0.006}$ |
| (48) $682.4 \div 7.9 = \underline{86-3}$ | (58) $643 \div 1.7 = \underline{378.23-0.009}$ |
| (49) $5380 \div 35.6 = \underline{151-4.40}$ | (59) $179.4 \div 63.9 = \underline{2.80-0.48}$ |
| (50) $867.28 \div 8.04 = \underline{107-7}$ | (60) $50.63 \div 9.78 = \underline{5.17-0.0674}$ |

除 法 練 習

次ノ割算ハ四捨五入ニヨツテ、錢ノ位マデ求メヨ。

- | | |
|---|---|
| (61) $316 \div 6 = \underline{52.67}$ | (71) $1.5 \div 0.9 = \underline{1.67}$ |
| (62) $185 \div 7 = \underline{26.43}$ | (72) $7.28 \div 0.3 = \underline{24.27}$ |
| (63) $248 \div 45 = \underline{5.51}$ | (73) $29.89 \div 0.8 = \underline{37.36}$ |
| (64) $715 \div 38 = \underline{18.82}$ | (74) $51.47 \div 7.4 = \underline{6.96}$ |
| (65) $48.5 \div 69 = \underline{0.70}$ | (75) $30.26 \div 5.1 = \underline{5.93}$ |
| (66) $1064 \div 270 = \underline{0.39}$ | (76) $86.54 \div 9.6 = \underline{9.01}$ |
| (67) $379.47 \div 810 = \underline{0.47}$ | (77) $47.3 \div 18.4 = \underline{2.57}$ |
| (68) $86.21 \div 563 = \underline{0.15}$ | (78) $736.8 \div 6.23 = \underline{118.27}$ |
| (69) $637.9 \div 407 = \underline{1.57}$ | (79) $169.23 \div 45.7 = \underline{3.70}$ |
| (70) $490.2 \div 639 = \underline{0.77}$ | (80) $827.35 \div 9.06 = \underline{91.32}$ |

昭和十八年一月二十日印刷

昭和十八年二月一日日本版發行

出文協承認 ち 270061 號

著 權 作
所 有

發行部數 150,000 部

(三・四・五・六・高一・高二・各25,000部宛)

非 賣 品

名古屋市西區新道町三丁目六十三番地

著 作 者 柳 原 孫 太 郎

名古屋市西區南久屋町三丁目四番地

印 刷 者 市 岡 岱

名古屋市西區南久屋町三丁目四番地

印 刷 所 名 古 屋 印 刷 株 式 會 社

名古屋市西區新道町三丁目六十三番地

發 行 所 學 童 數 學 調 查 會

會員登錄番號 106131

電話 西 〇 五 二 五 二 番

攝 替 名 古 屋 二 四 二 七 七 番

東京市神田區淡路町二丁目九番地

配 給 元 日 本 出 版 配 給 株 式 會 社

