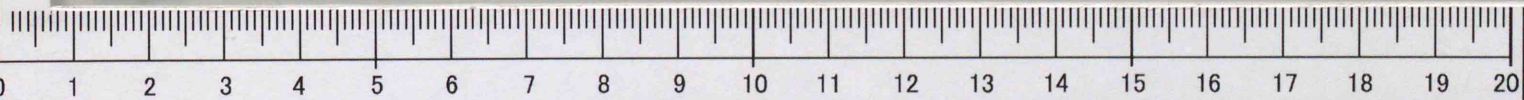
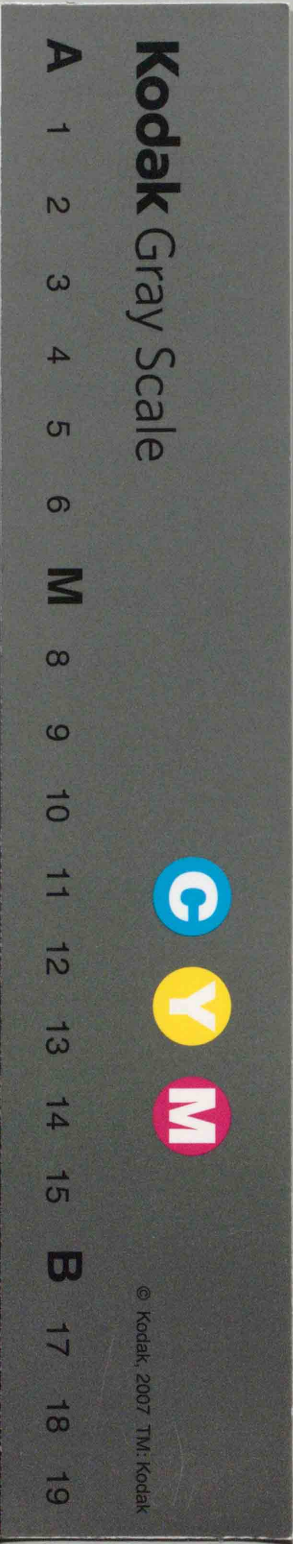
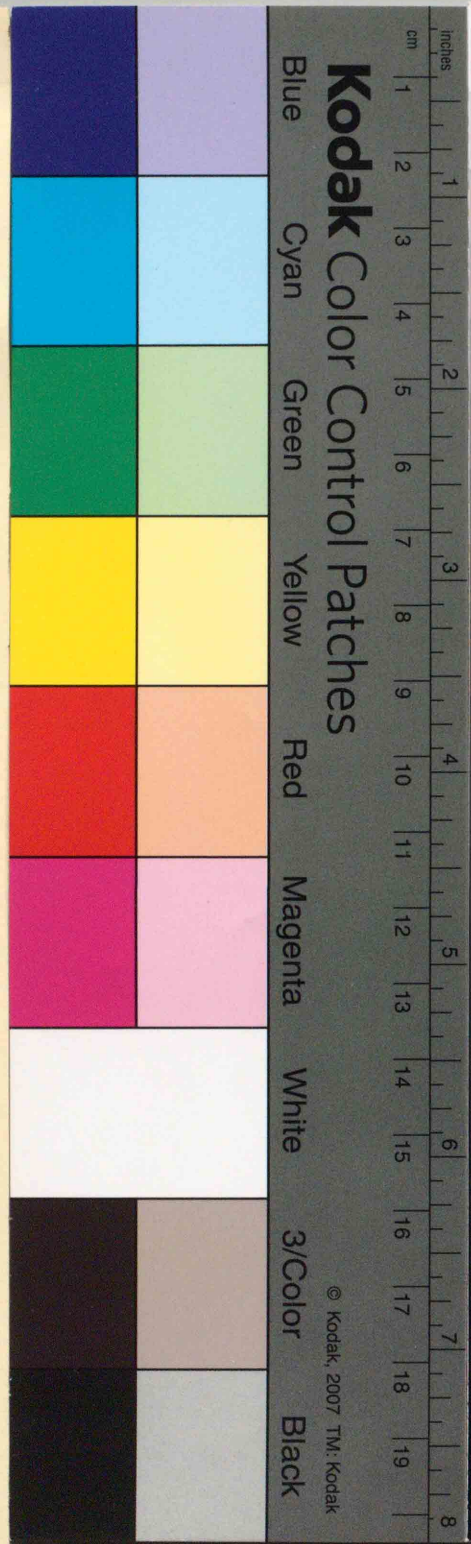


40745

教科書文庫

4
710
42-1944
2000.0 26359



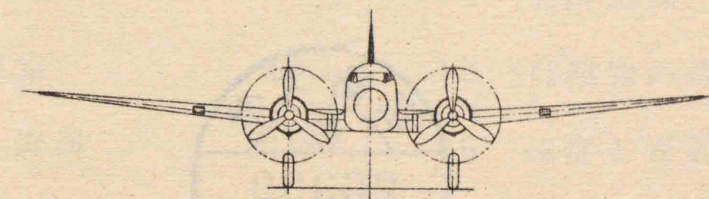
395.9
Chu 20

資料室

文部省檢定済
昭和十九年一月十日 高等女學校・實業學校藝能科用

圖畫

1



中等學校女子用

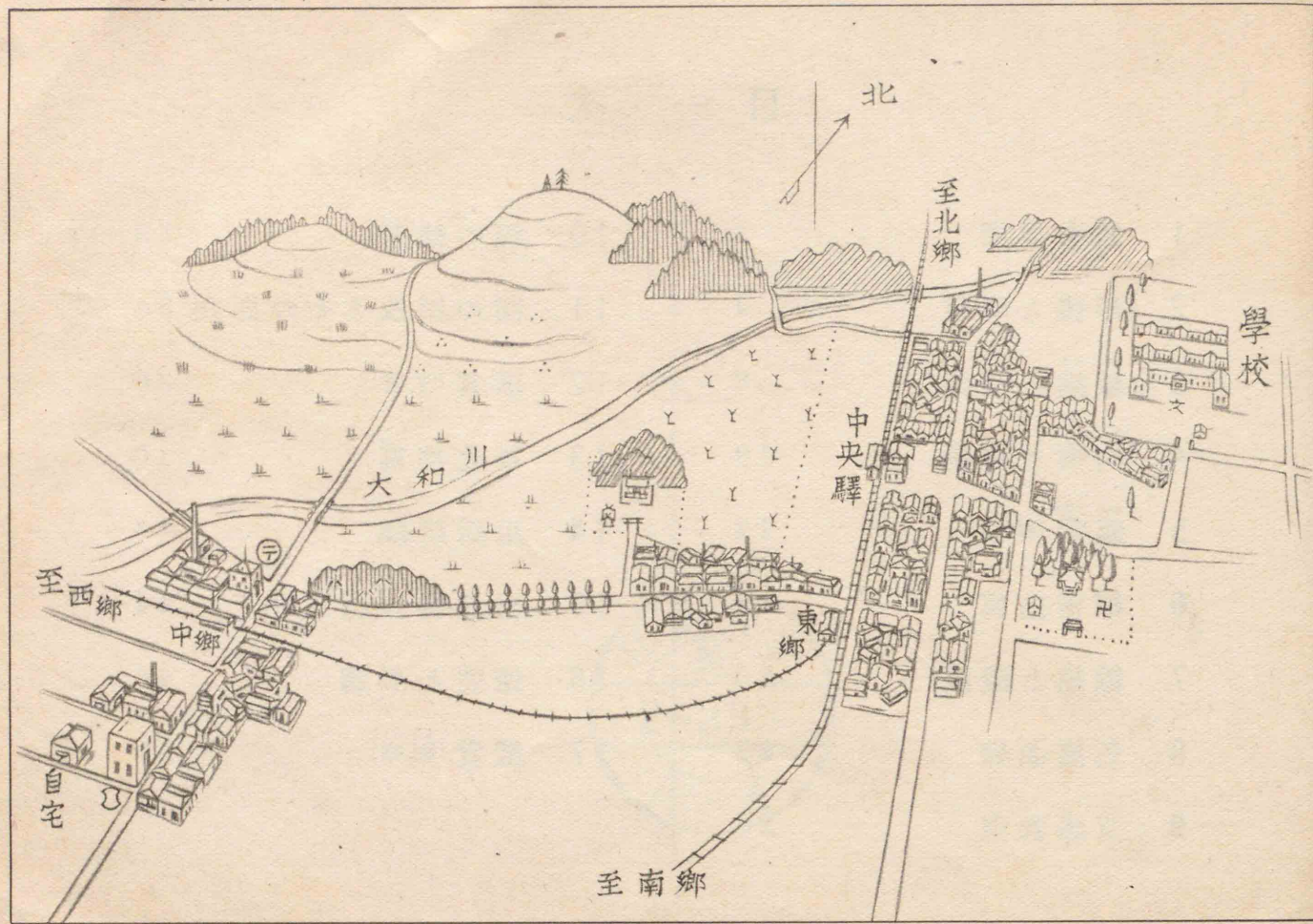
廣島大學
書畫部



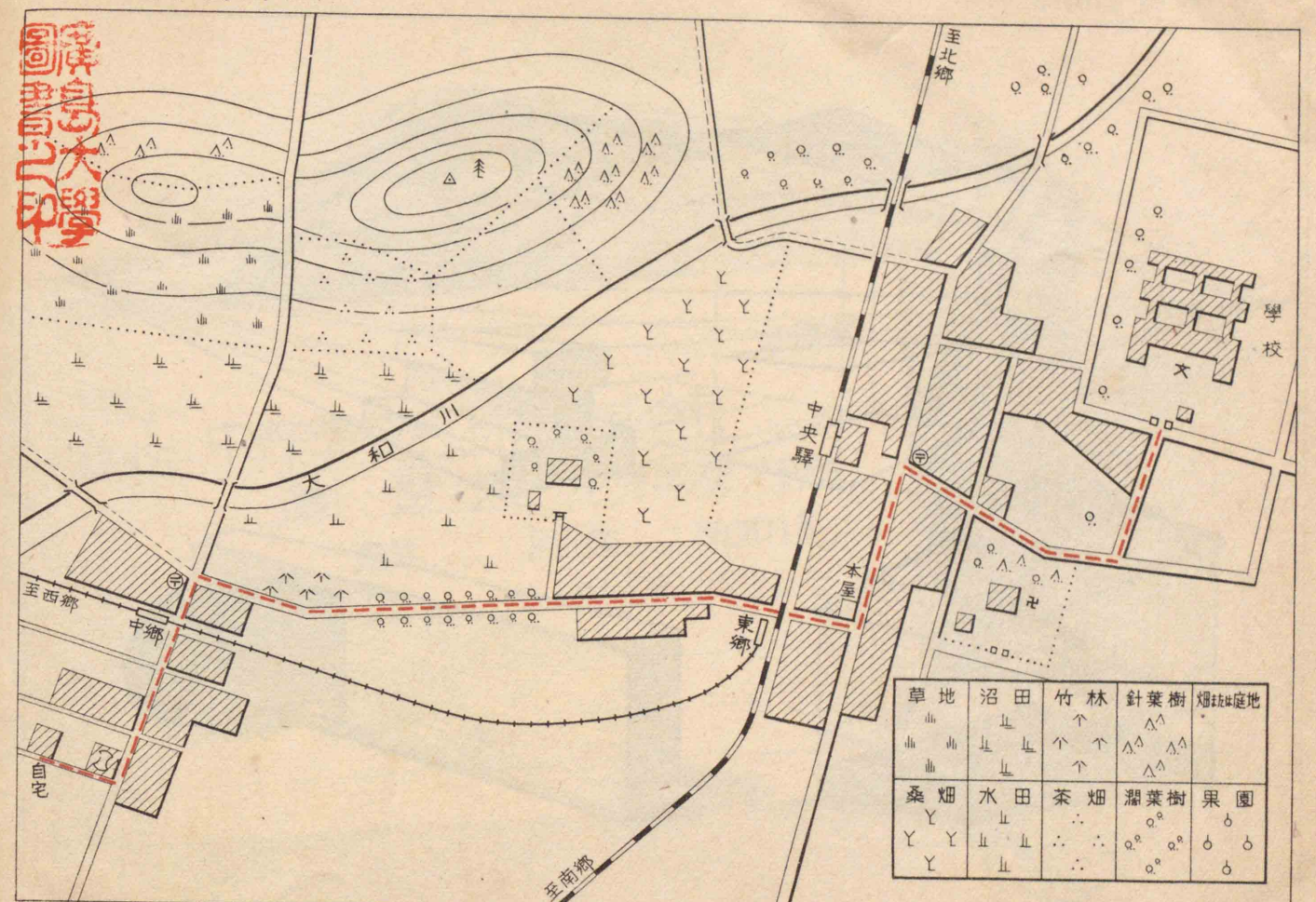
目次

1	通學要圖	2	10	線の練習	32
2	形體と明暗	4	11	圓の圖法とその應用	34
3	線描 <small>せんべう</small> と濃淡	8	12	鑑賞(工藝)	36
4	均衡 <small>きんかう</small> と律動	10	13	單化描寫	40
5	鑑賞 <small>かんしやう</small> (繪畫)	12	14	生活記錄	42
6	細密描寫	18	15	自然物の様式化	44
7	線描と濃淡	20	16	速度と形體	46
8	色感訓練	22	17	鑑賞 <small>てうこく</small> (彫刻)	48
9	質感表現	28			

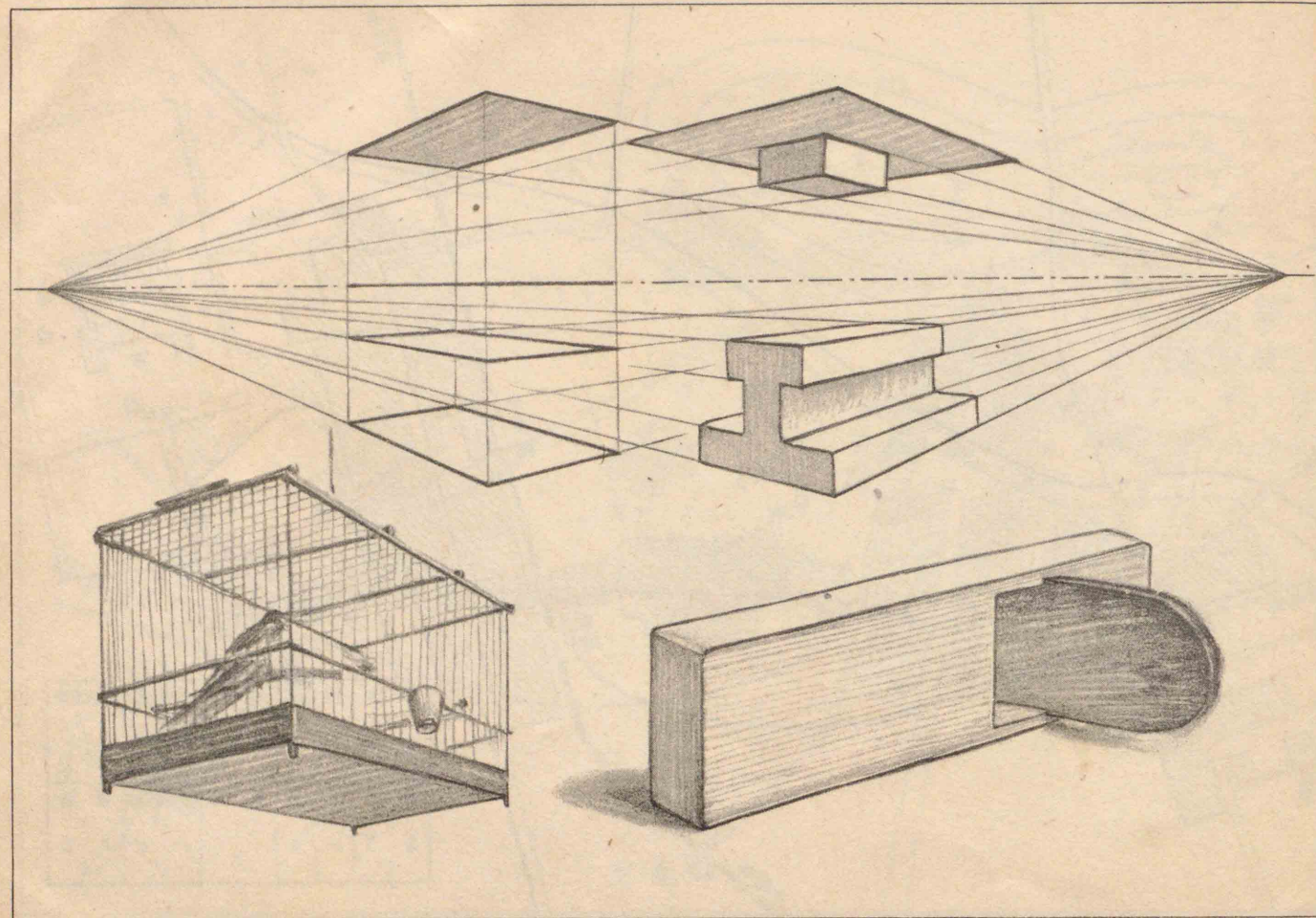
1 通學要圖 (一)



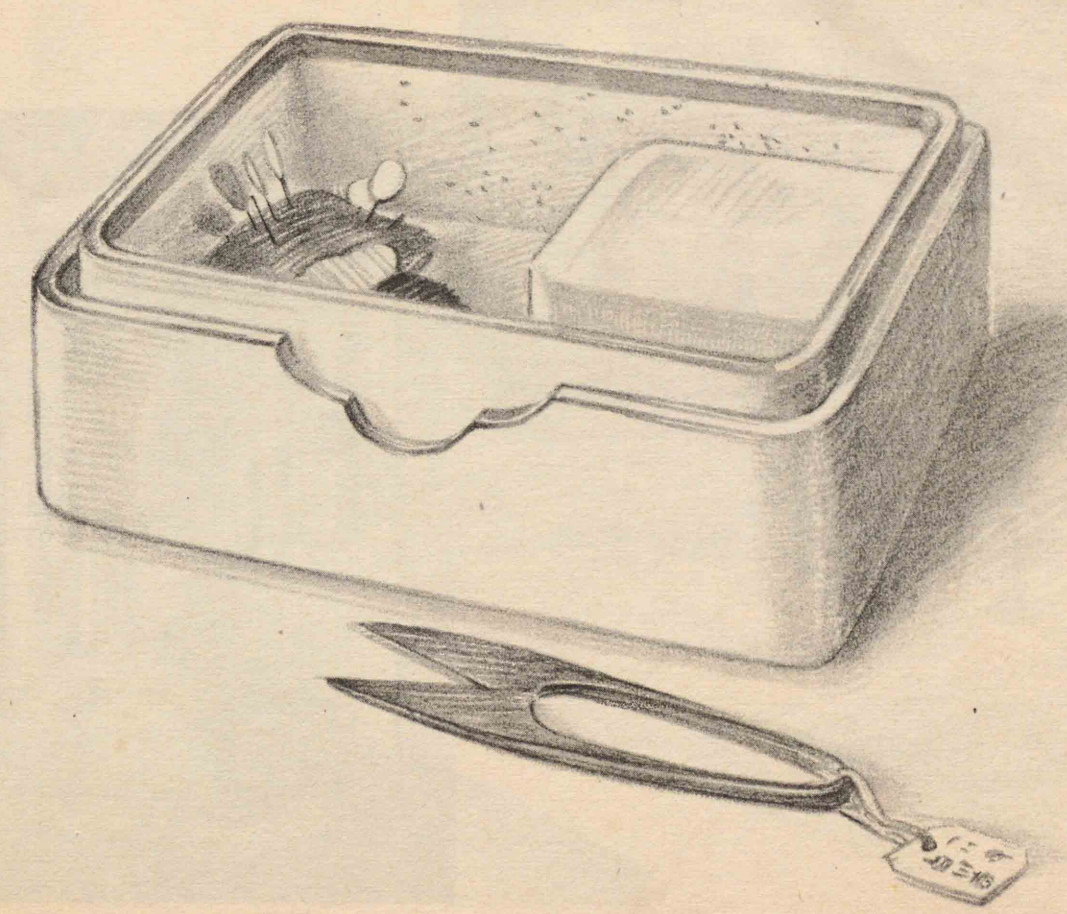
1 通學要圖 (二)



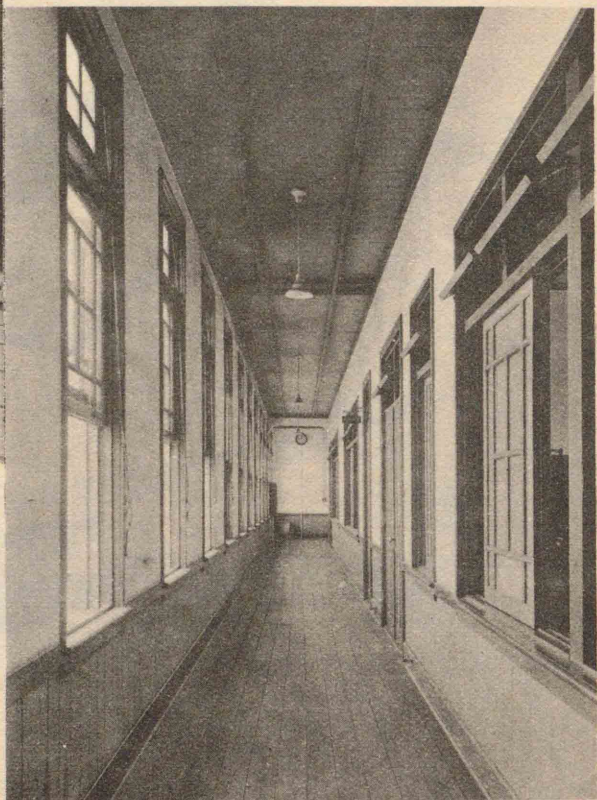
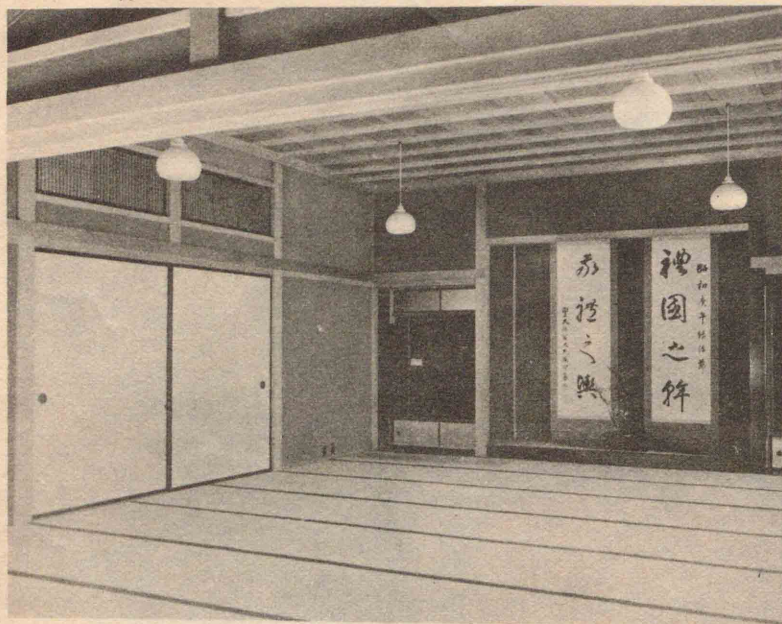
2 形體と明暗 (一)



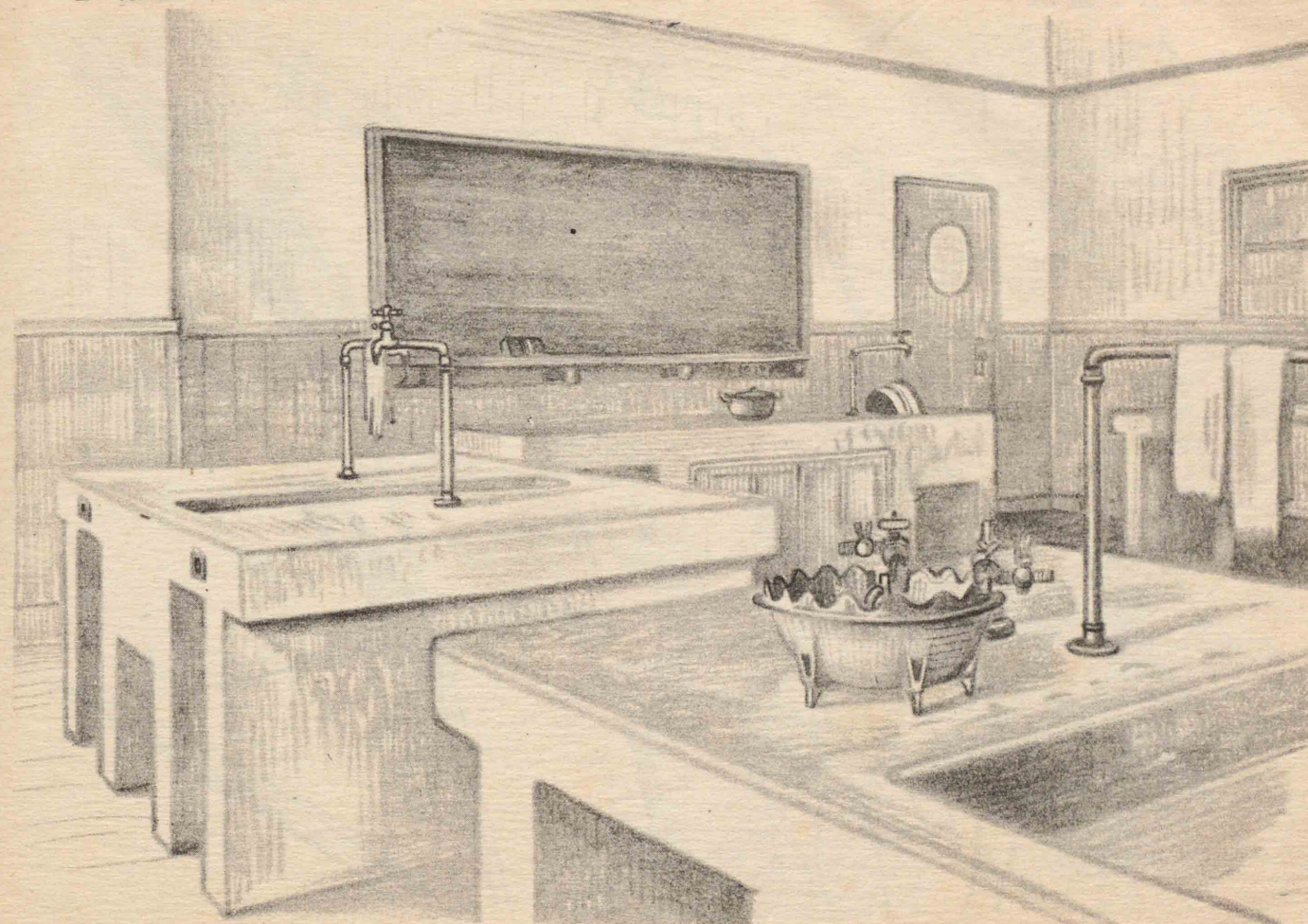
2 形體と明暗 (二)



2 形體と明暗 (三)



2 形體と明暗 (四)



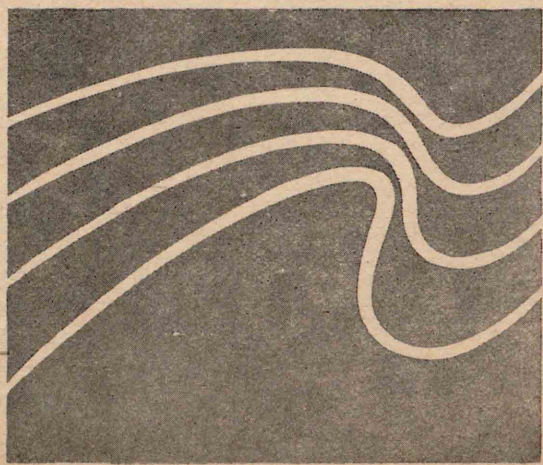
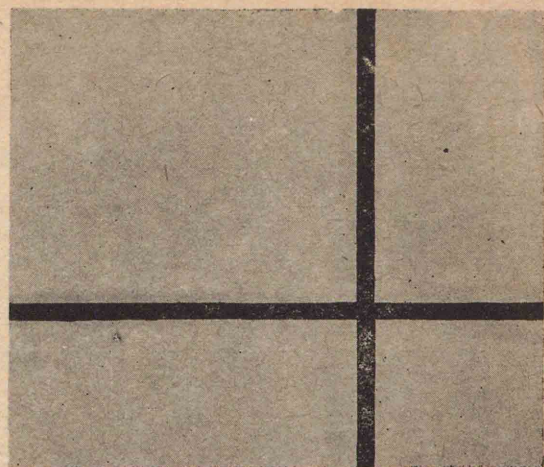
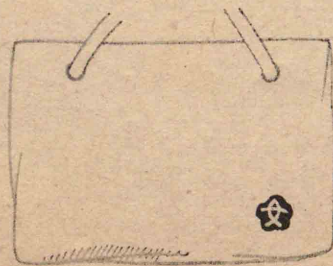
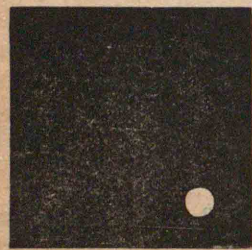
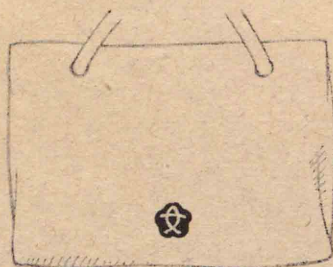
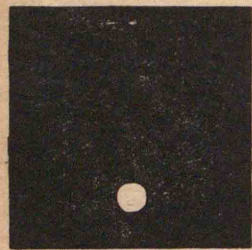
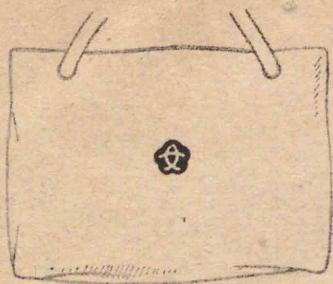
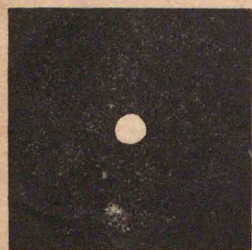
3 線描と濃淡 (一)



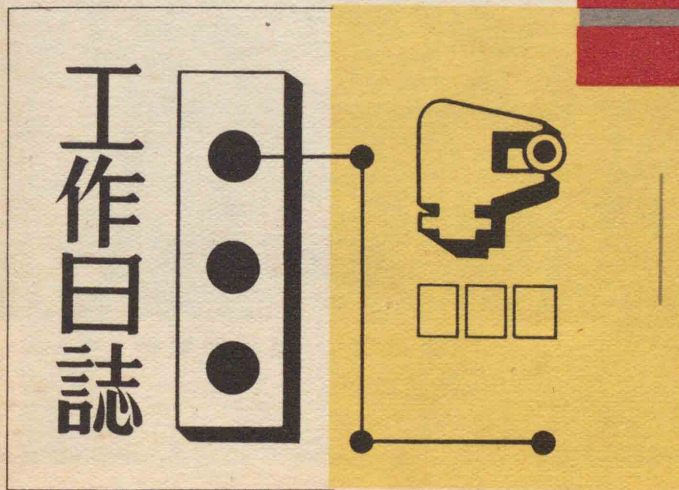
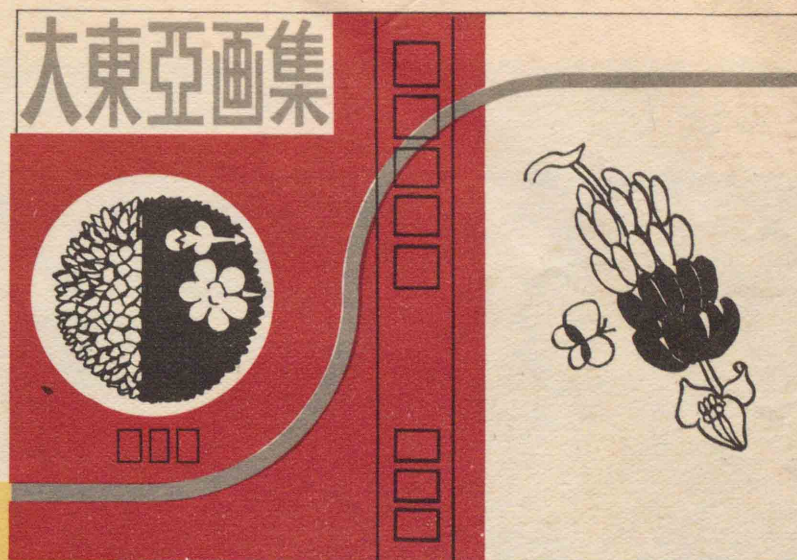
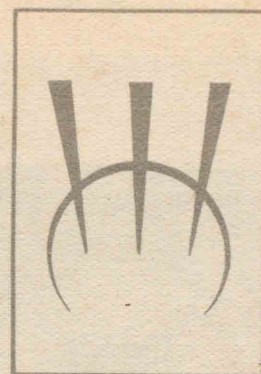
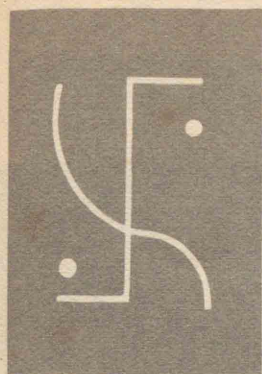
3 線描と濃淡 (二)



4 均衡と律動 (一)



4 均衡と律動 (二)

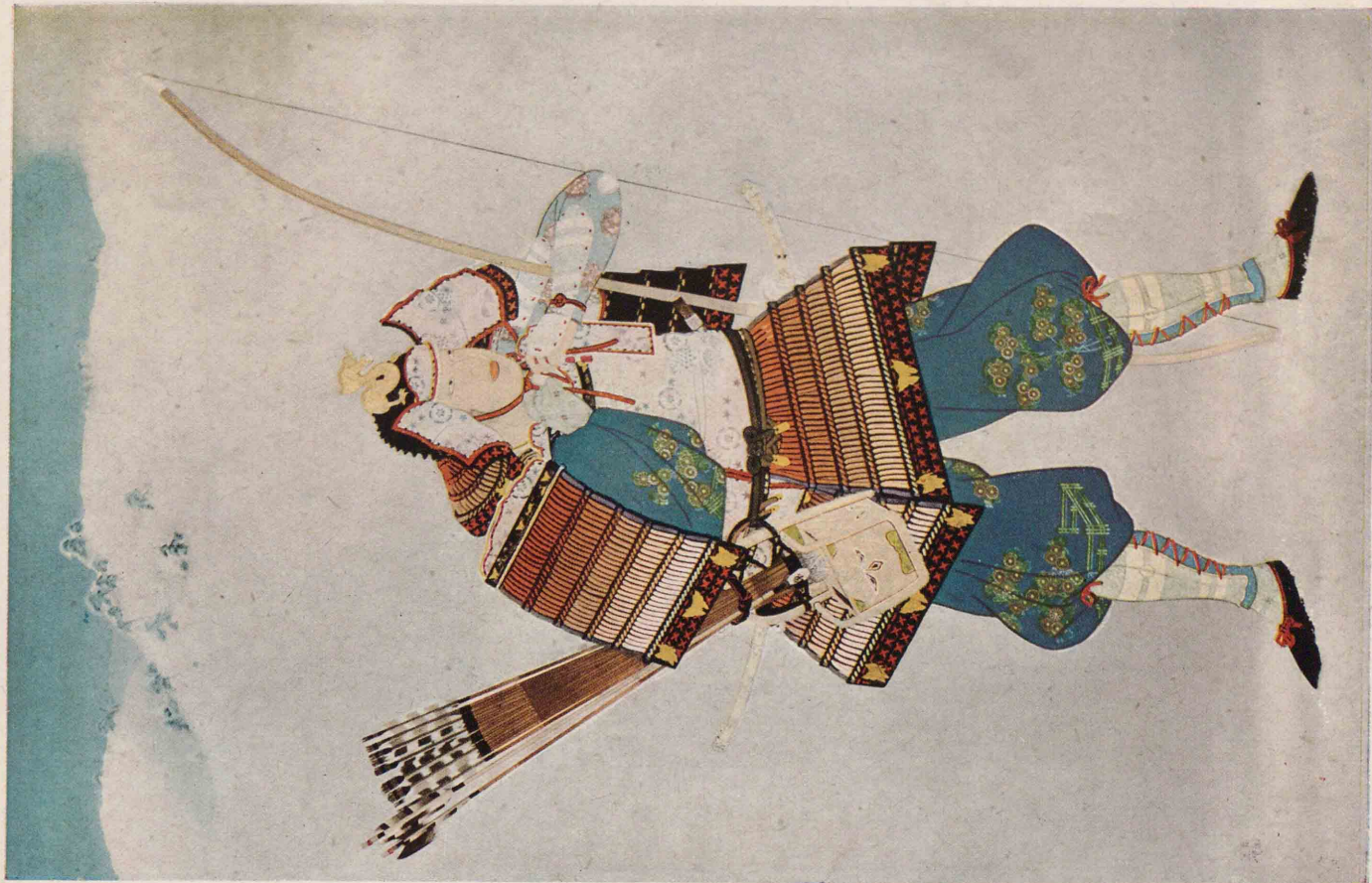


書籍の大きさ

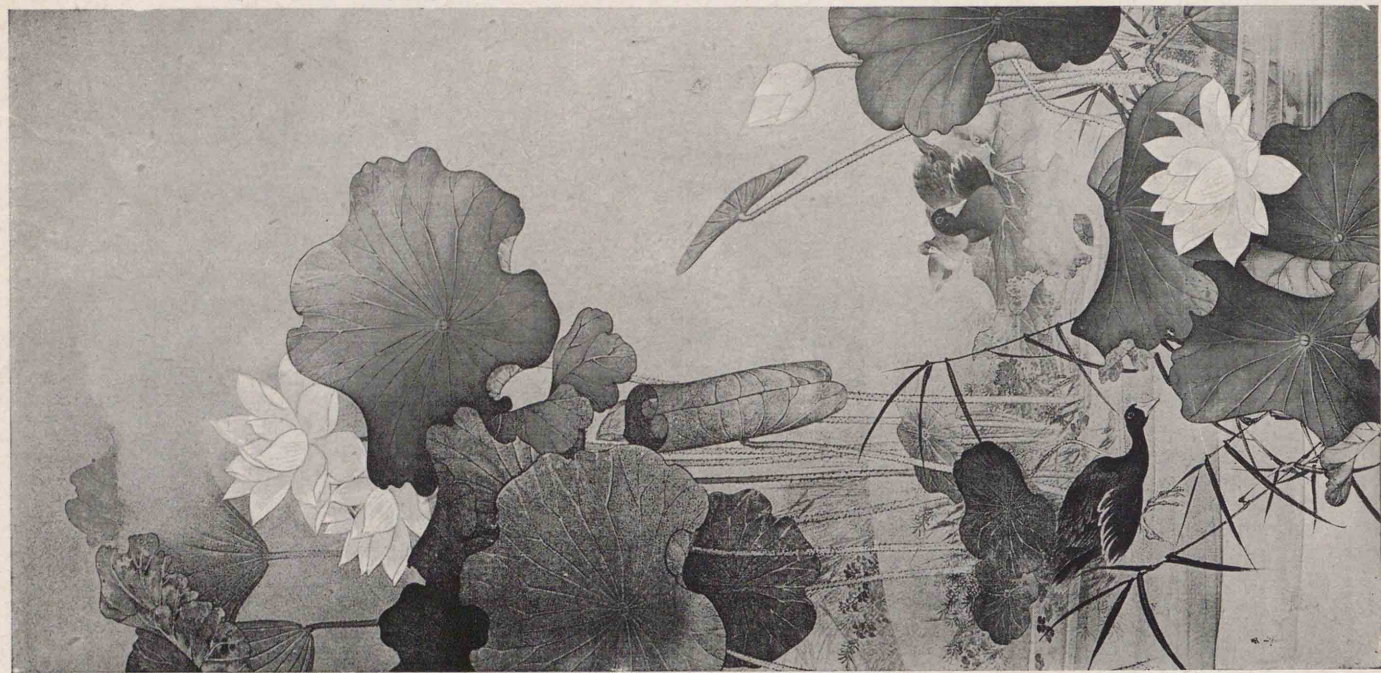
番號	A	B
4	210 mm × 297 mm (6.93 寸) (9.80 寸)	257 mm × 364 mm (8.48 寸) (12.01 寸)
5	148 mm × 210 mm (4.88 寸) (6.93 寸)	182 mm × 257 mm (6.01 寸) (8.48 寸)
6	105 mm × 148 mm (3.47 寸) (4.88 寸)	128 mm × 182 mm (4.22 寸) (6.01 寸)
7	74 mm × 105 mm (2.44 寸) (3.47 寸)	91 mm × 128 mm (3.00 寸) (4.22 寸)



猛虎 橋本雅邦筆



平治の重盛 松岡映丘筆



荷花水禽 川端玉章筆



鯖 竹内栖 鳳筆



戦地の天長節 浅井 忠筆



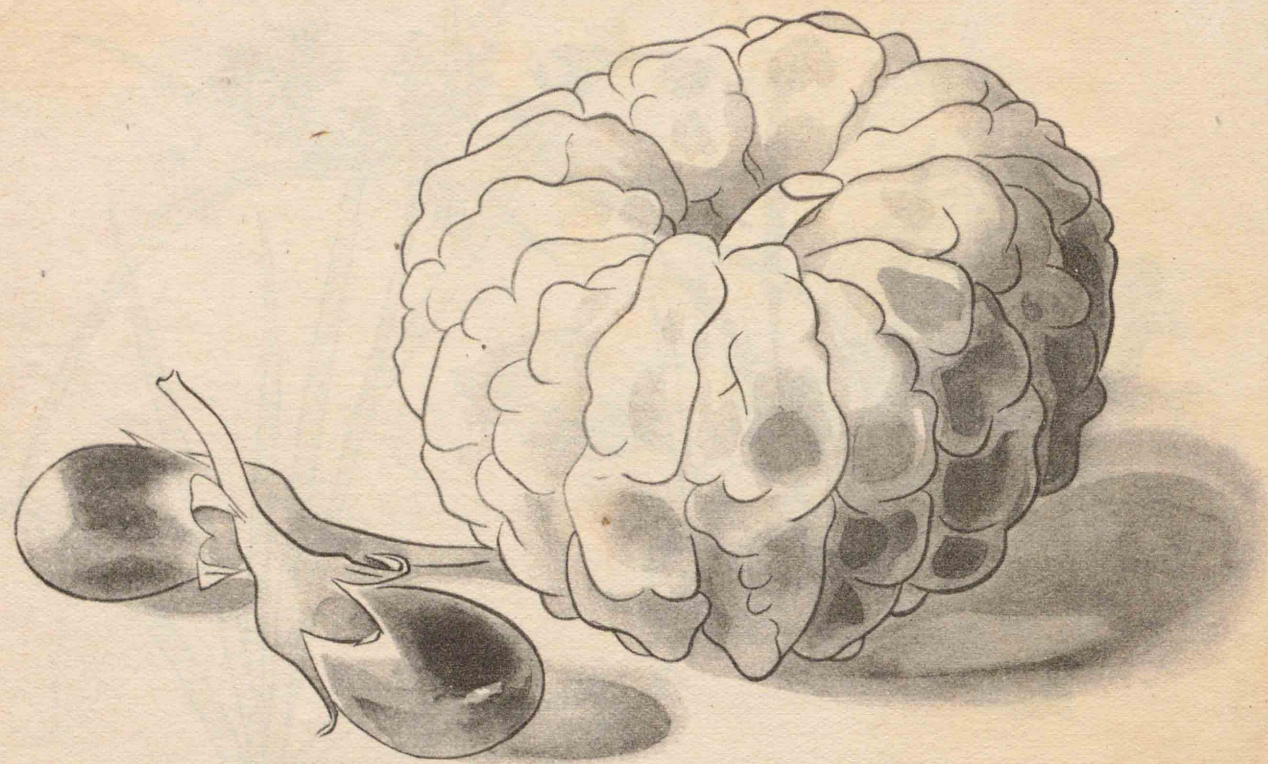
上海黄浦江 藤島武二筆

6 細密描寫 (一)



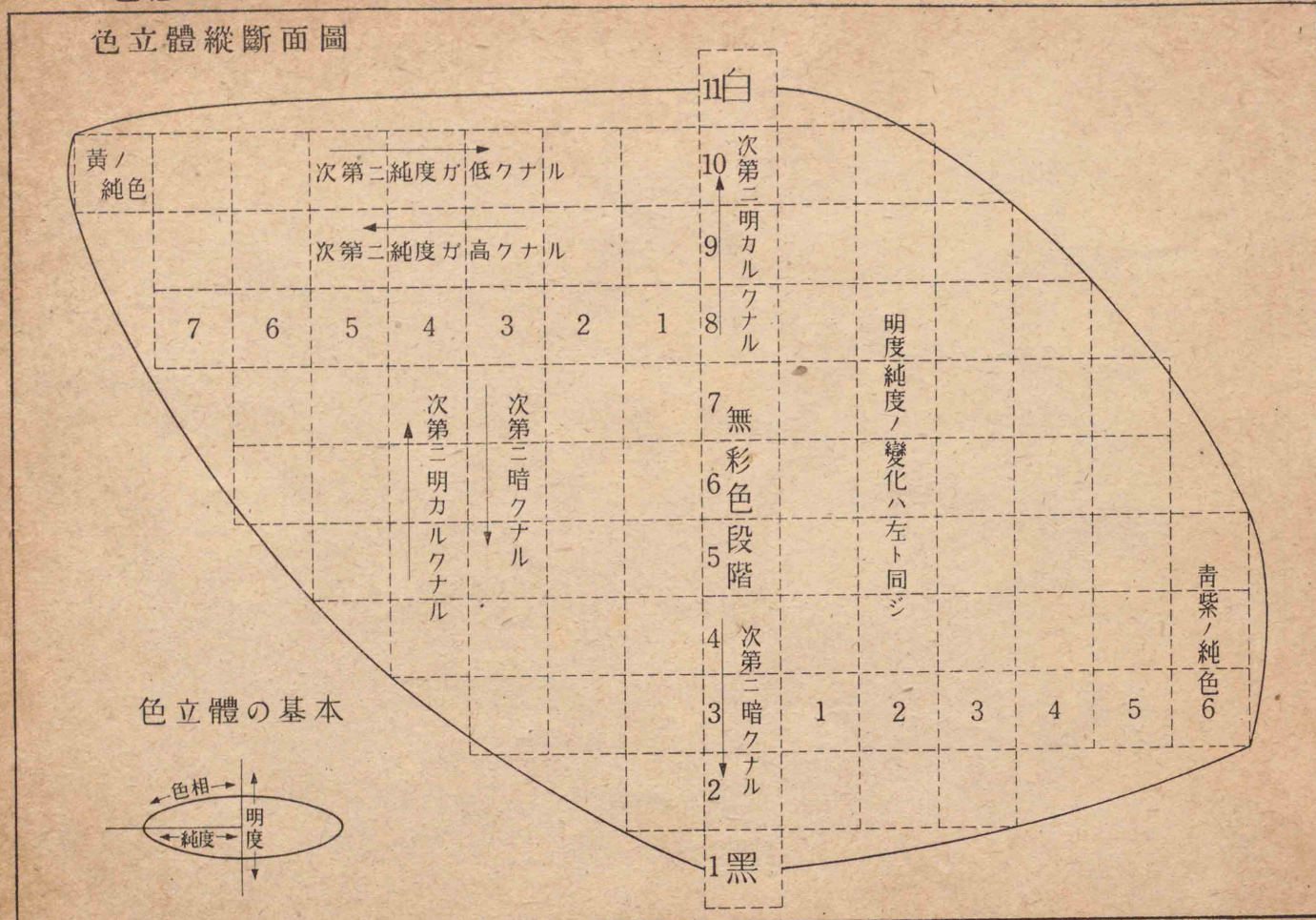
6 細密描寫 (二)





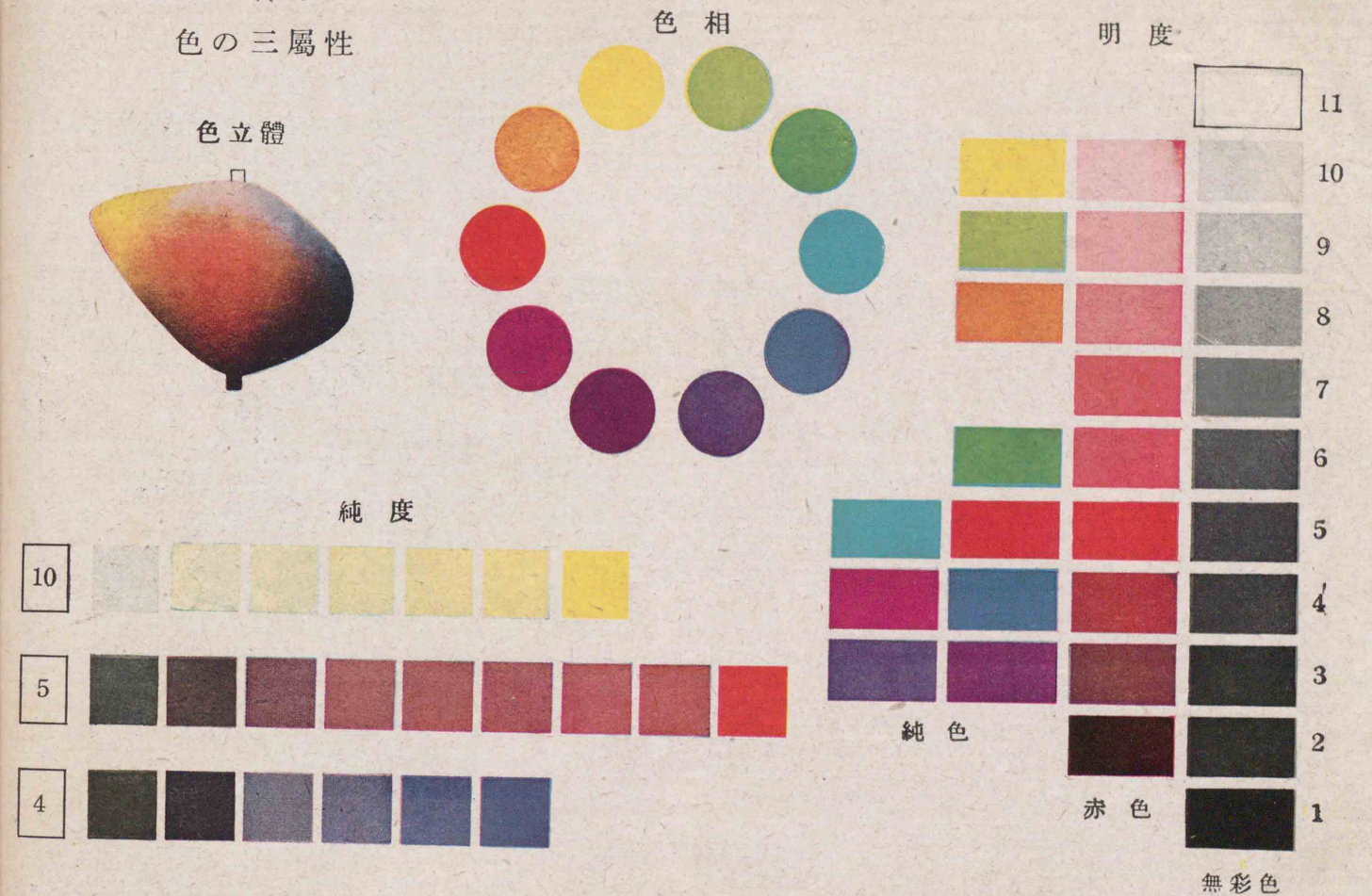
8 色感訓練(一)

色立體縱斷面圖



8 色感訓練(二)

色の三屬性



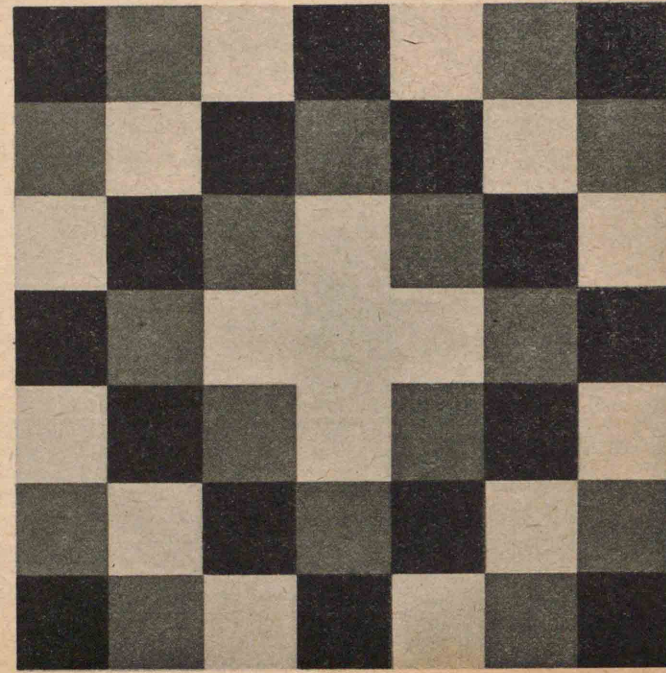
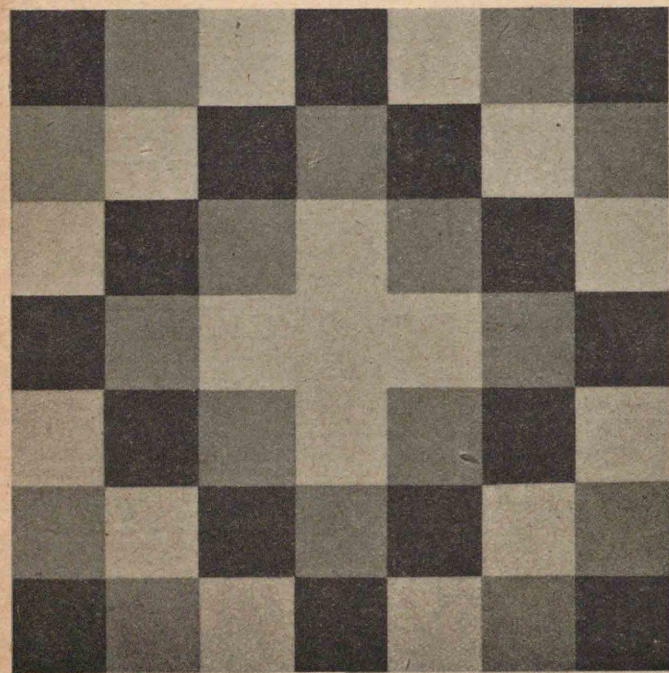
8 色感訓練 (三)

無彩色の配合

明度差の小さいもの



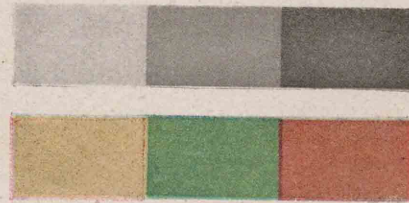
明度差の大きいもの



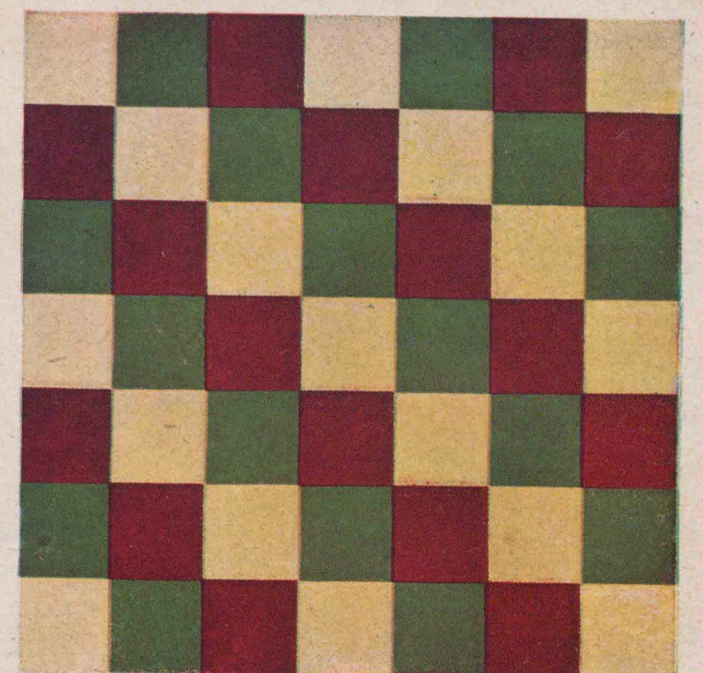
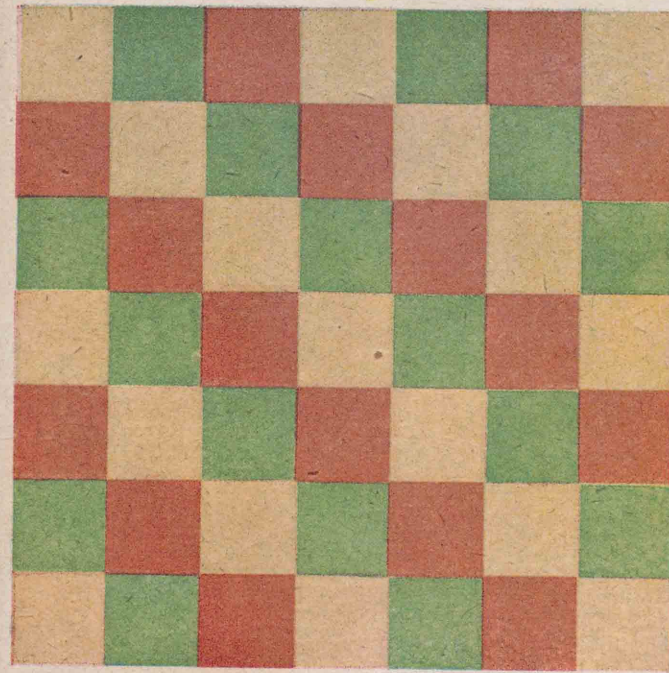
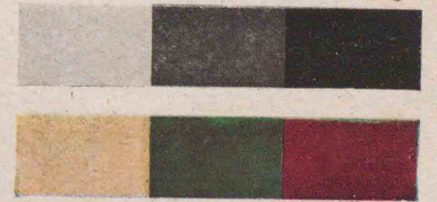
8 色感訓練 (四)

有彩色の配合

明度差の小さいもの



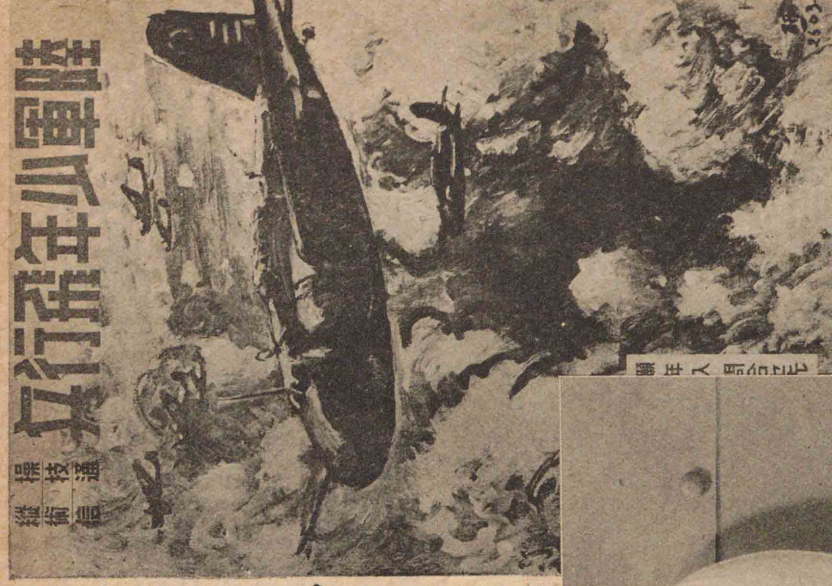
明度差の大きいもの



操作
技術

飛行隊年少軍陸

8 色感訓練(五)



課日軍海國帝

金木水火月

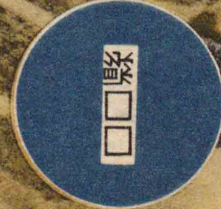
訓練訓練訓練訓練訓練

金木水火月

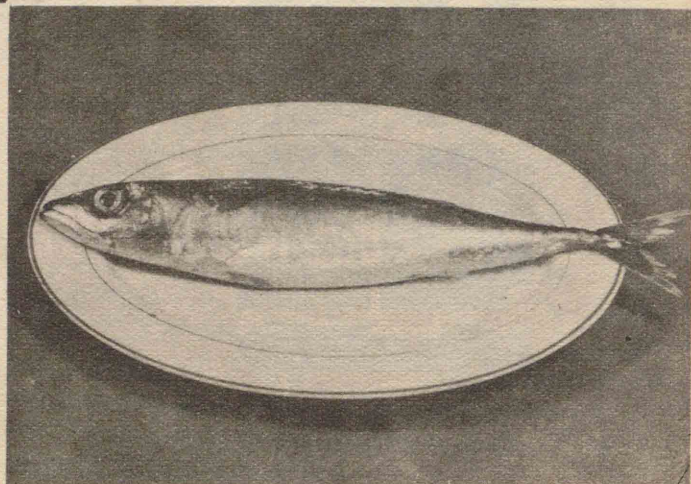
訓練訓練訓練訓練訓練

日念記軍海<輝

8 色感訓練(六)



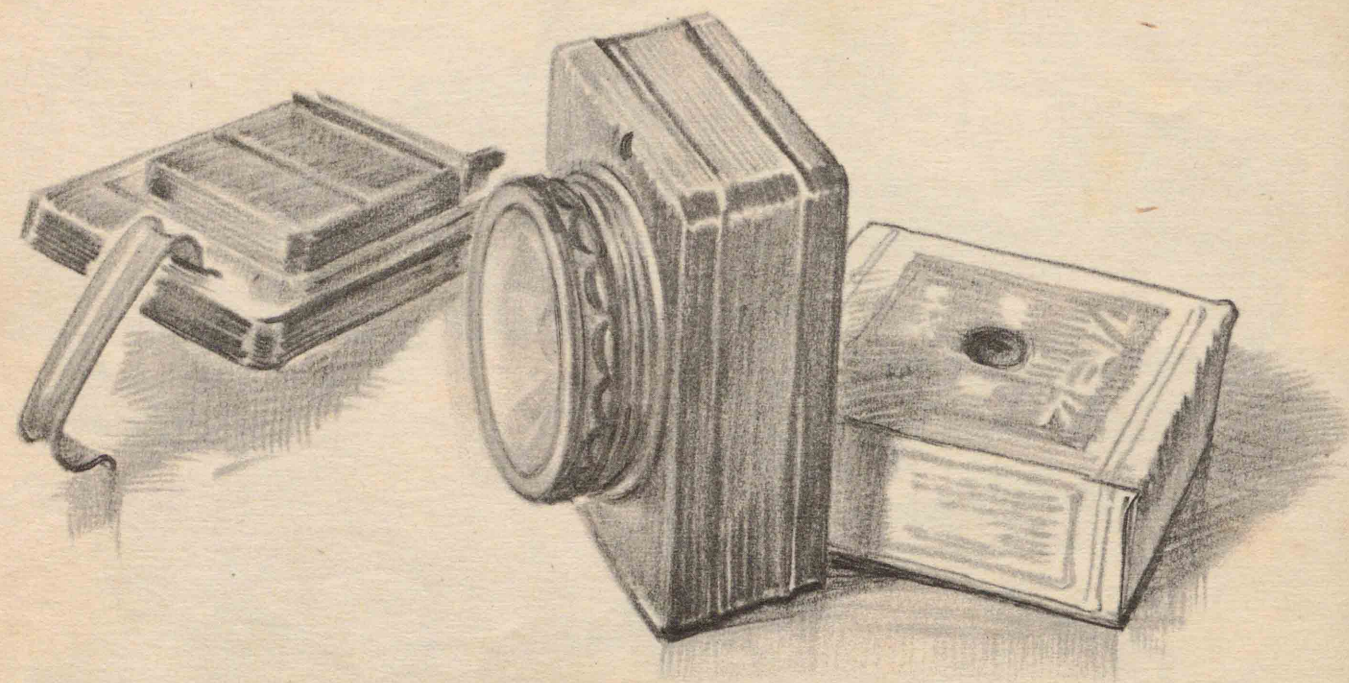
9 質感表現 (一)



9 質感表現 (二)



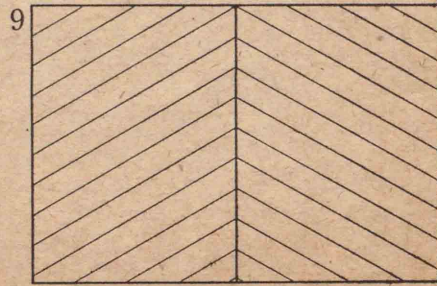
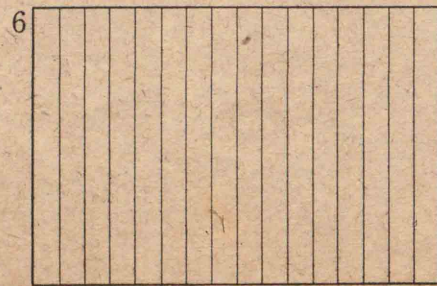
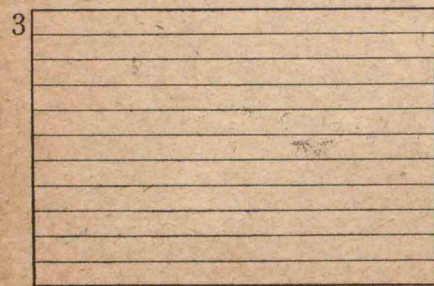
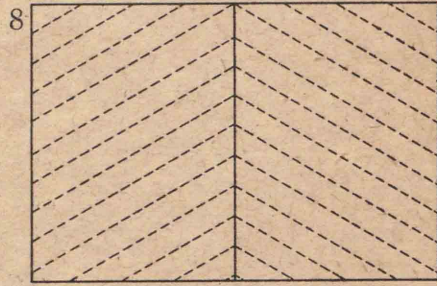
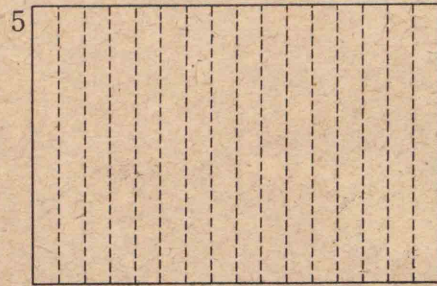
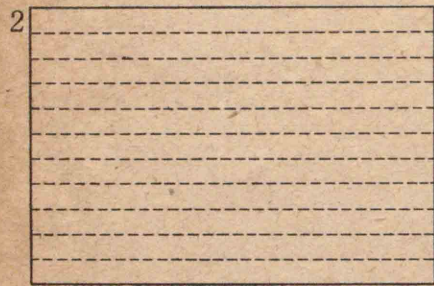
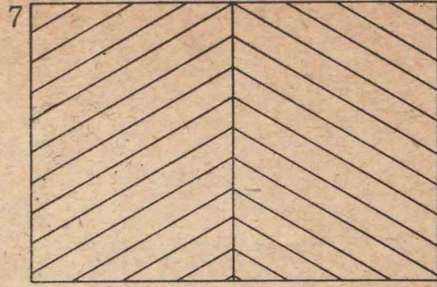
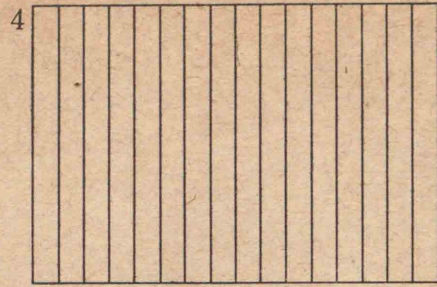
9 質感表現 (三)



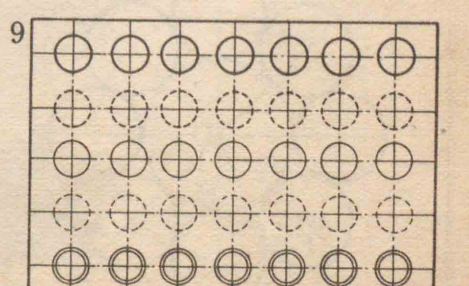
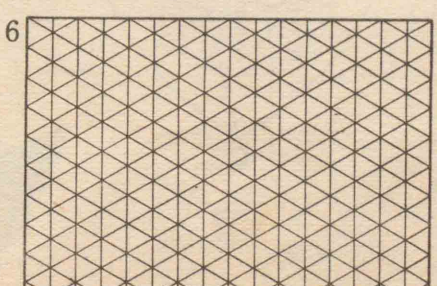
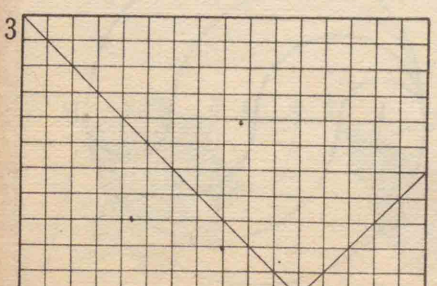
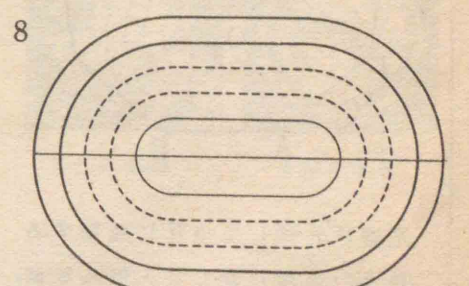
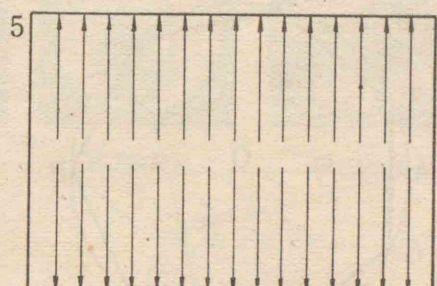
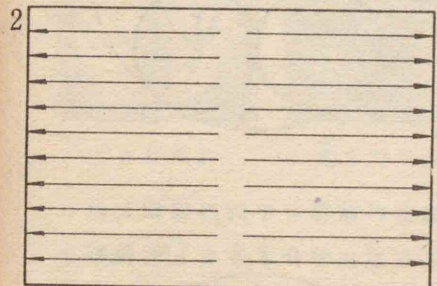
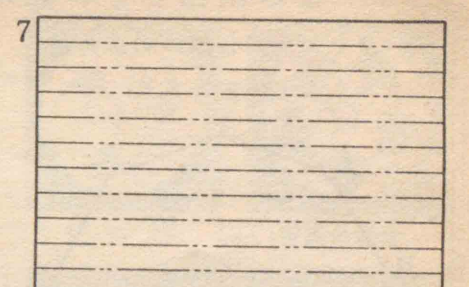
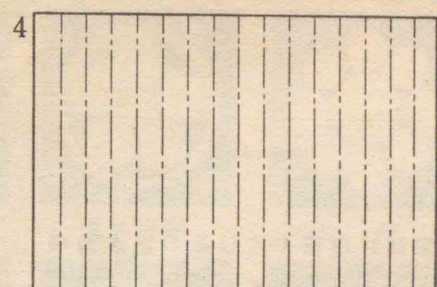
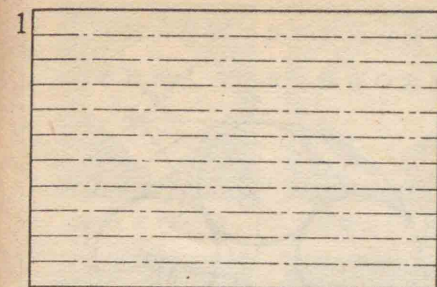
9 質感表現 (四)



10 線の練習 (一)

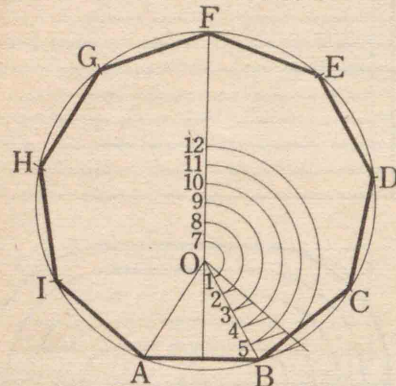


10 線の練習 (二)

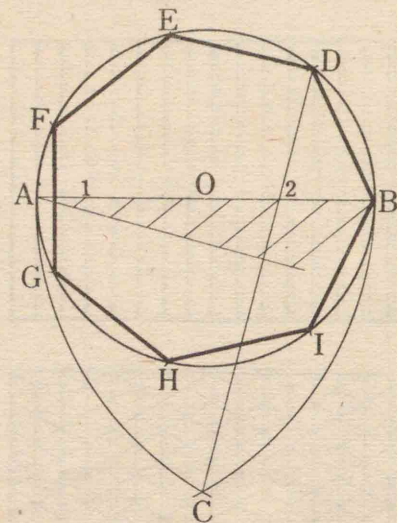


11 圓の圖法とその應用 (一)

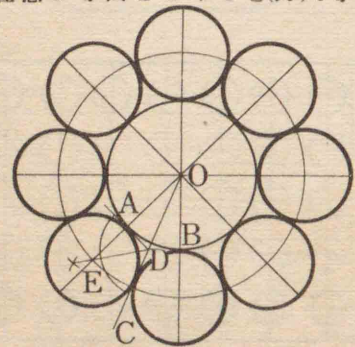
一邊を知つて任意の正多角形
をかくこと(例正九角形)



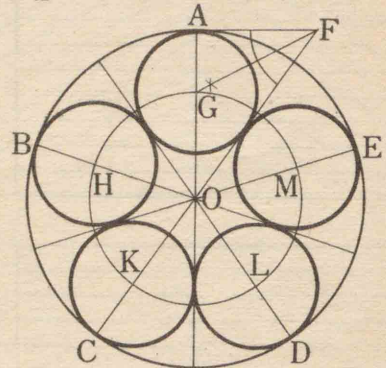
定圓に内接する任意の正多角形
をかくこと(例正七角形)



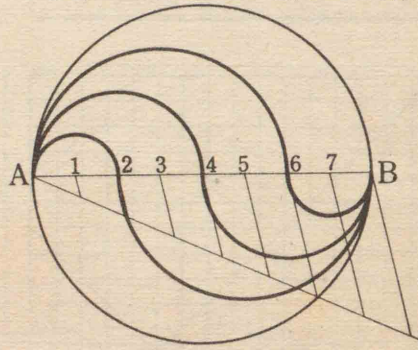
定圓に外接し且つ互に接続する
任意の等圓をかくこと(例八等圓)



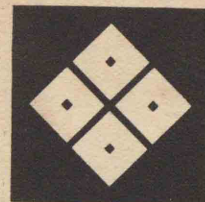
定圓に内接し且つ互に接続する
任意の等圓をかくこと(例五等圓)



定圓の面積を半圓の連續を以つ
て任意に等分すること(例四分)



11 圓の圖法とその應用 (二)



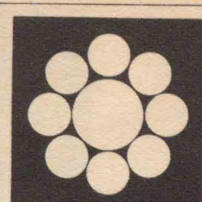
隅立て四つ目



丸に隅立て太井筒



丸に梅鉢



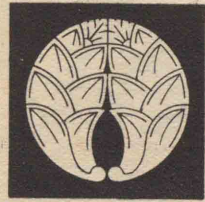
九曜



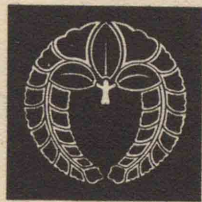
三つ巴



唐花浮線綾



だきめらが



蔭さがり藤



降り鶴の丸



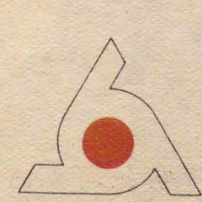
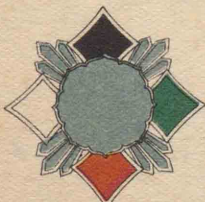
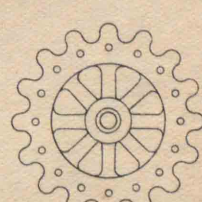
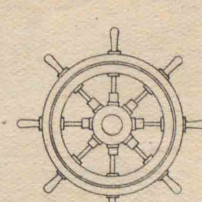
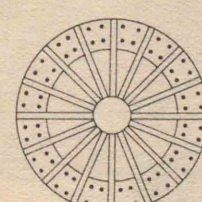
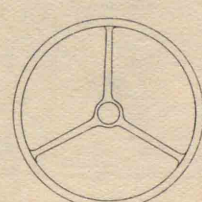
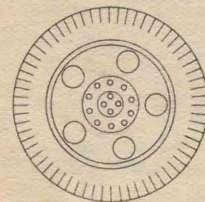
稻の丸

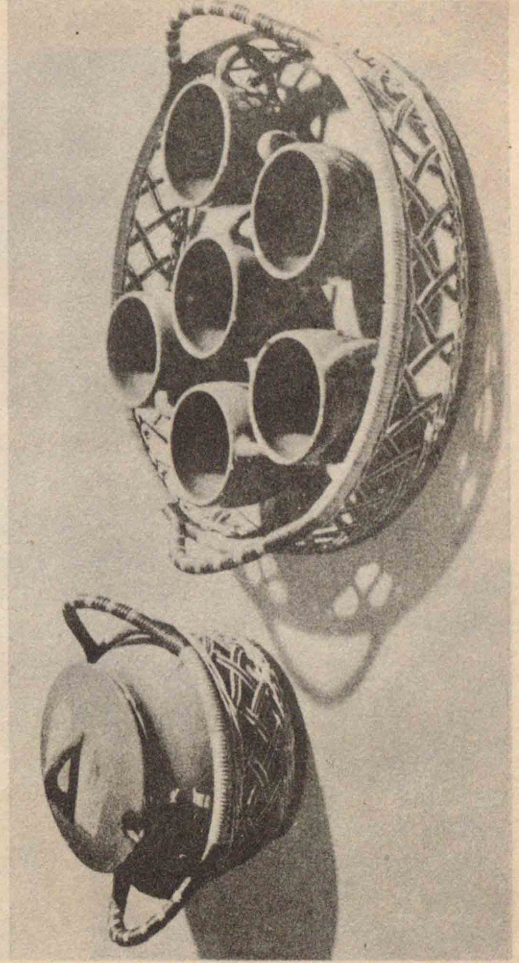
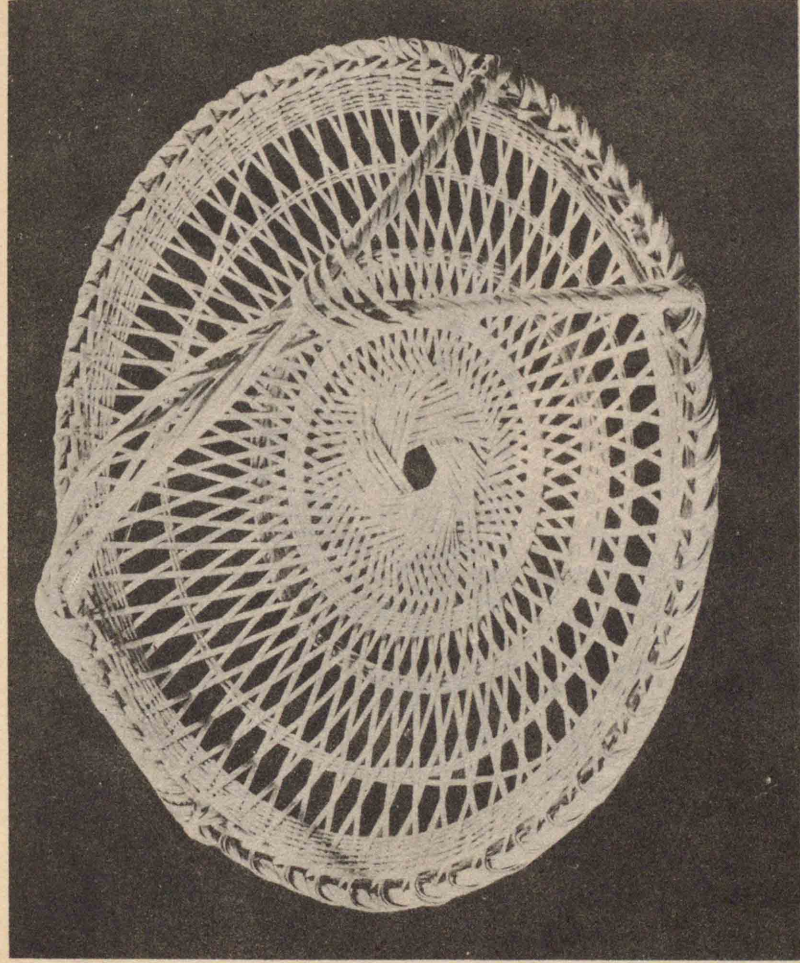
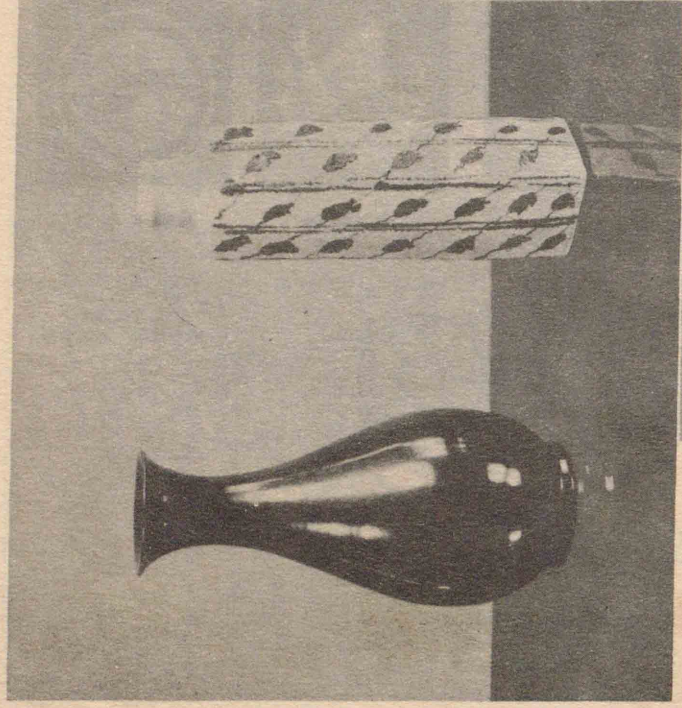


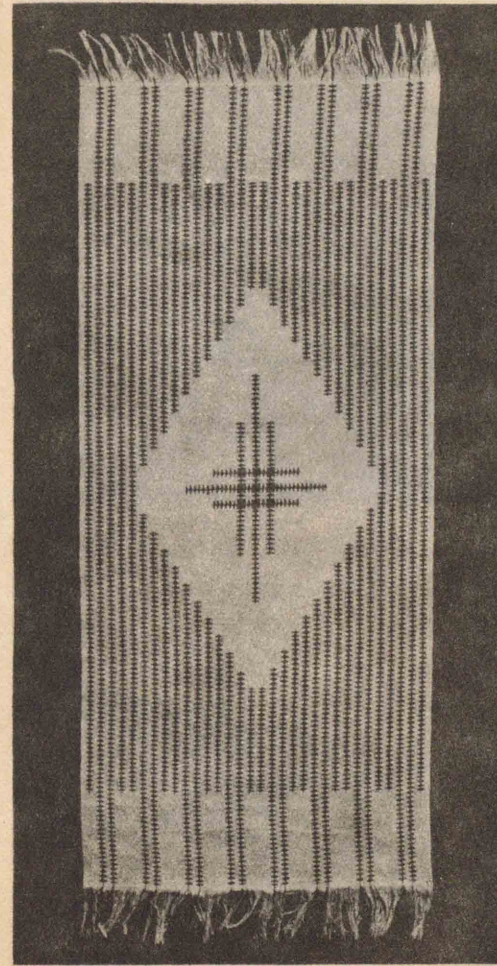
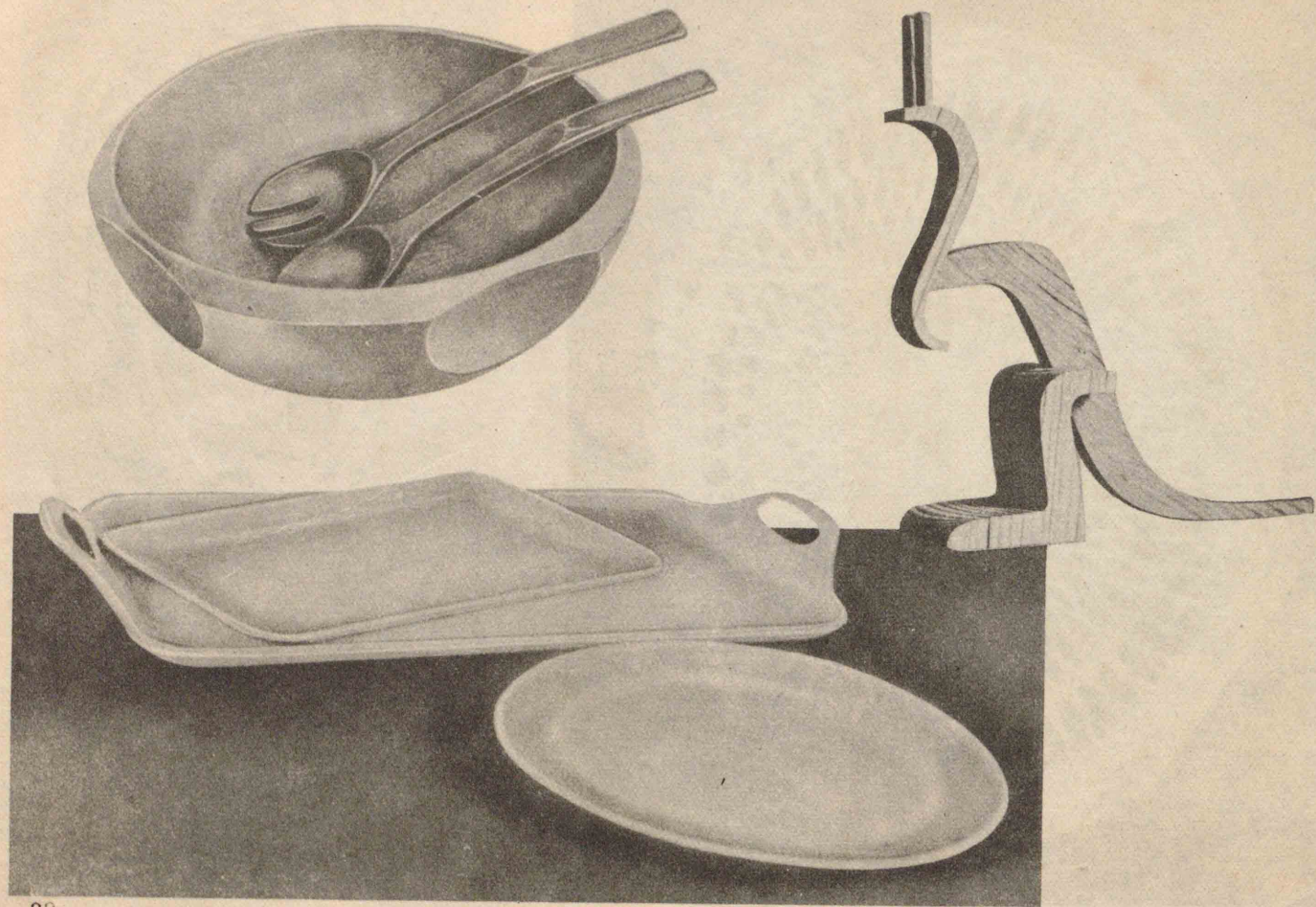
あげ羽蝶



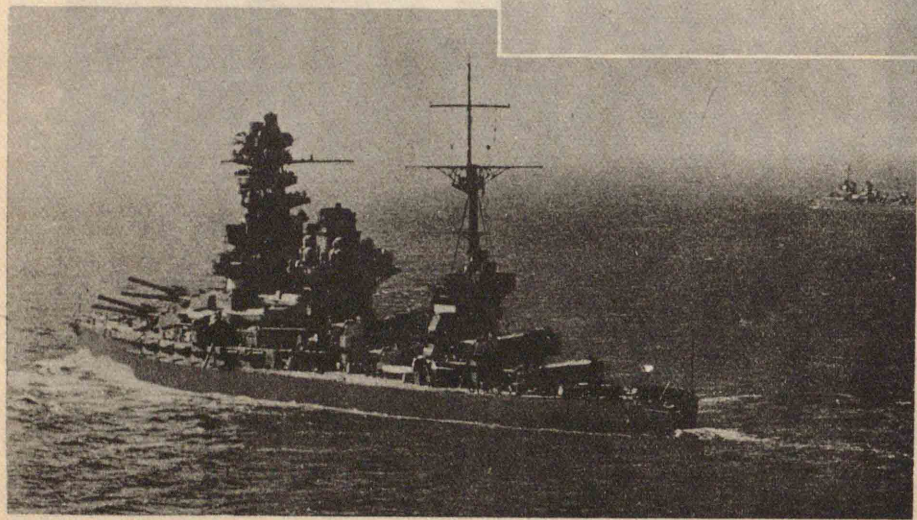
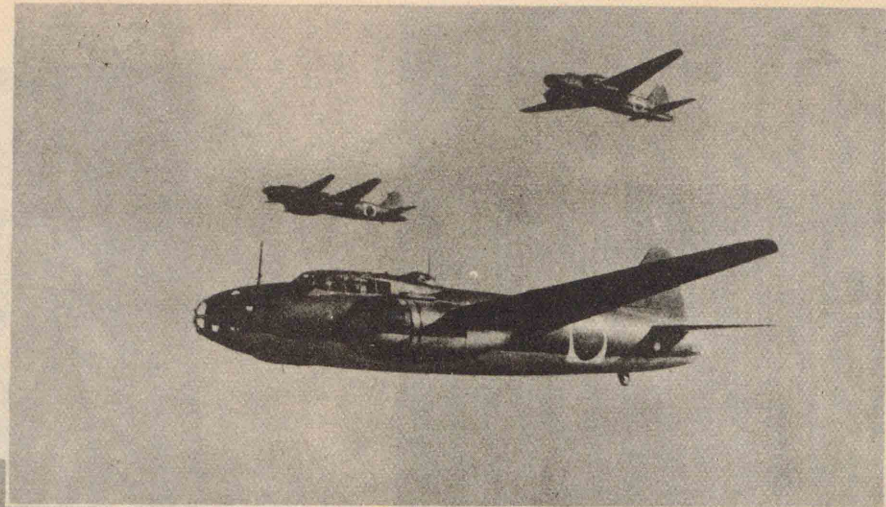
糸輪に帆菱



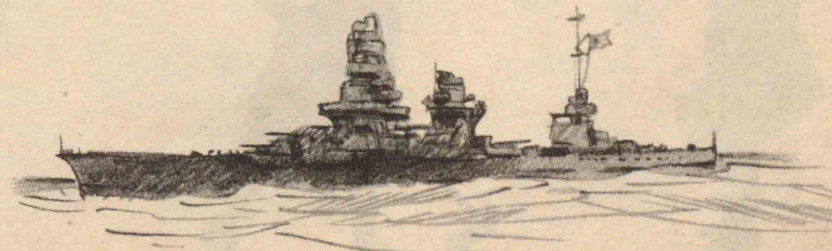
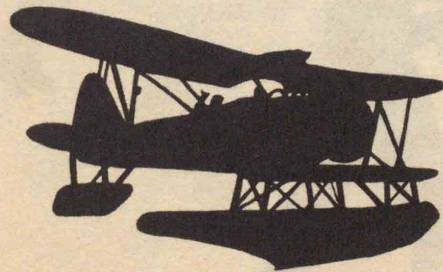
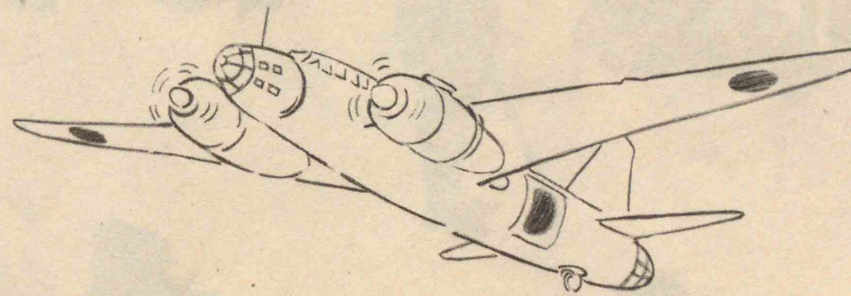
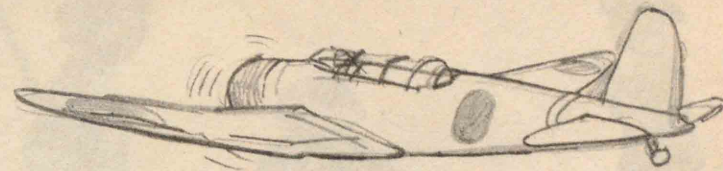




13 單化描寫 (一)

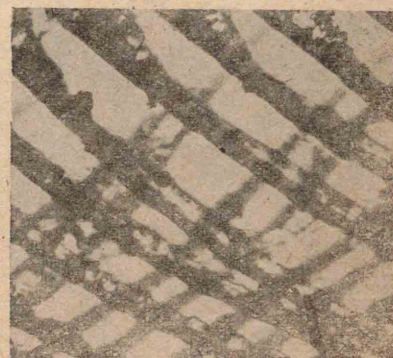
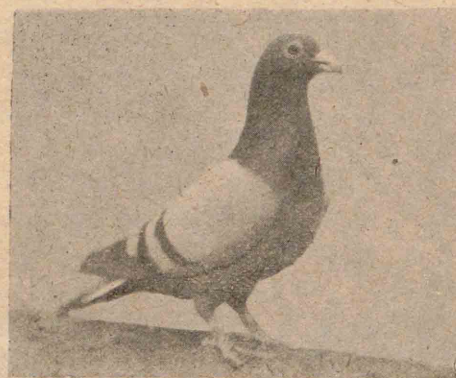
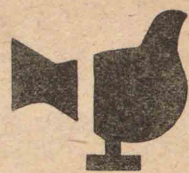
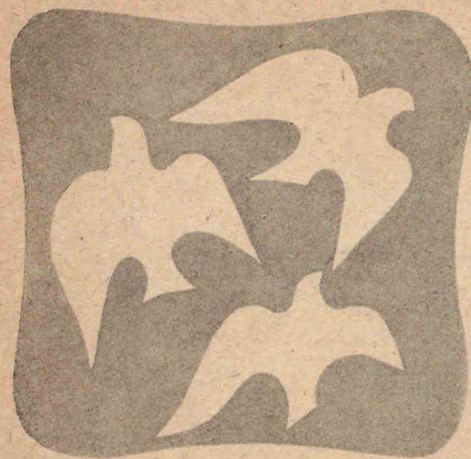


13 單化描寫 (二)





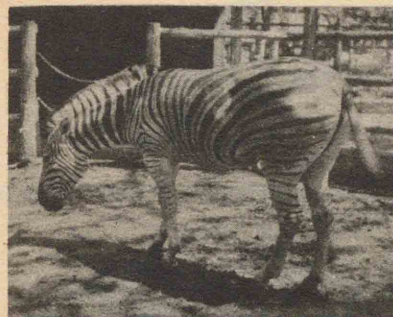
15 自然物の様式化 (一)



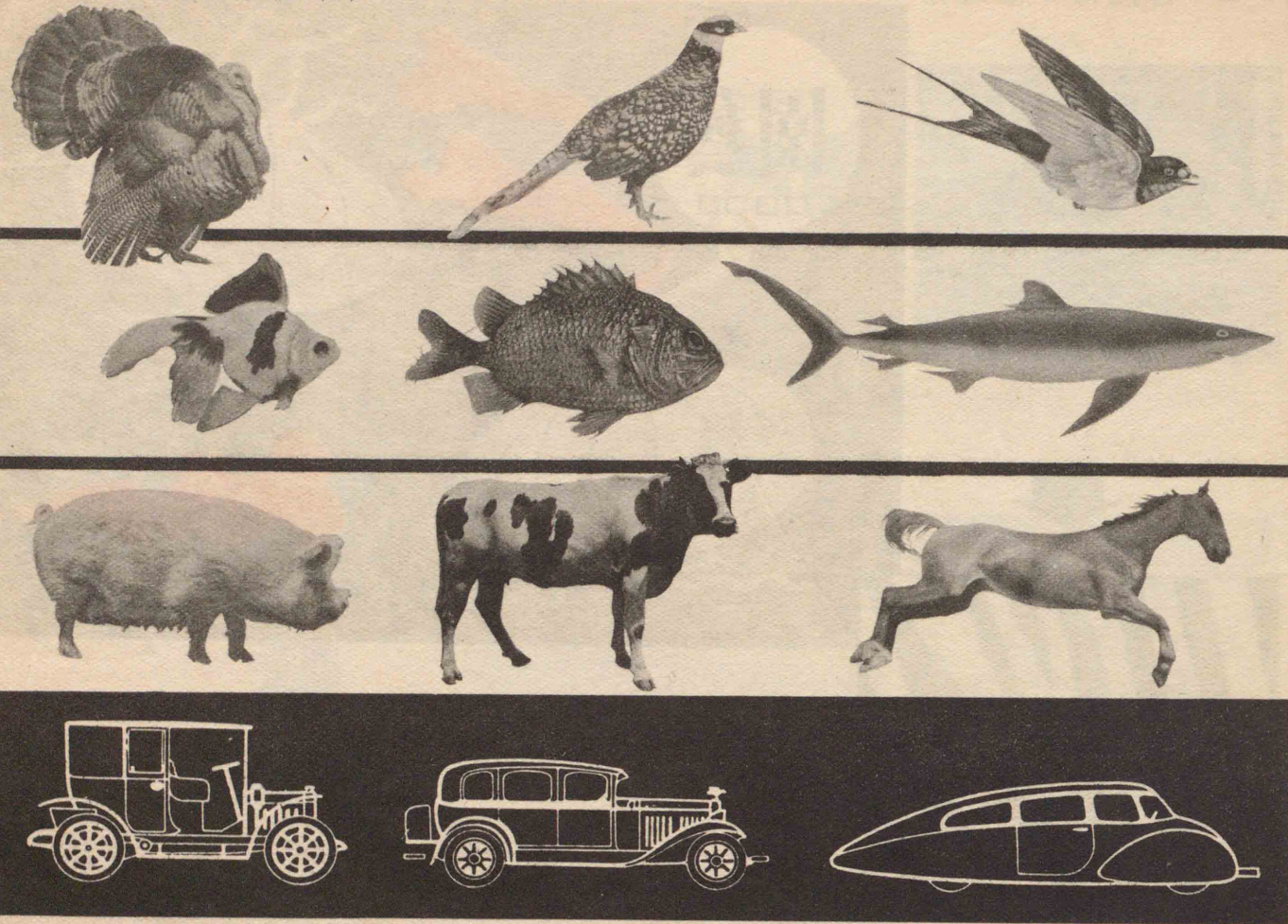
鳩の羽毛の顕微鏡寫眞



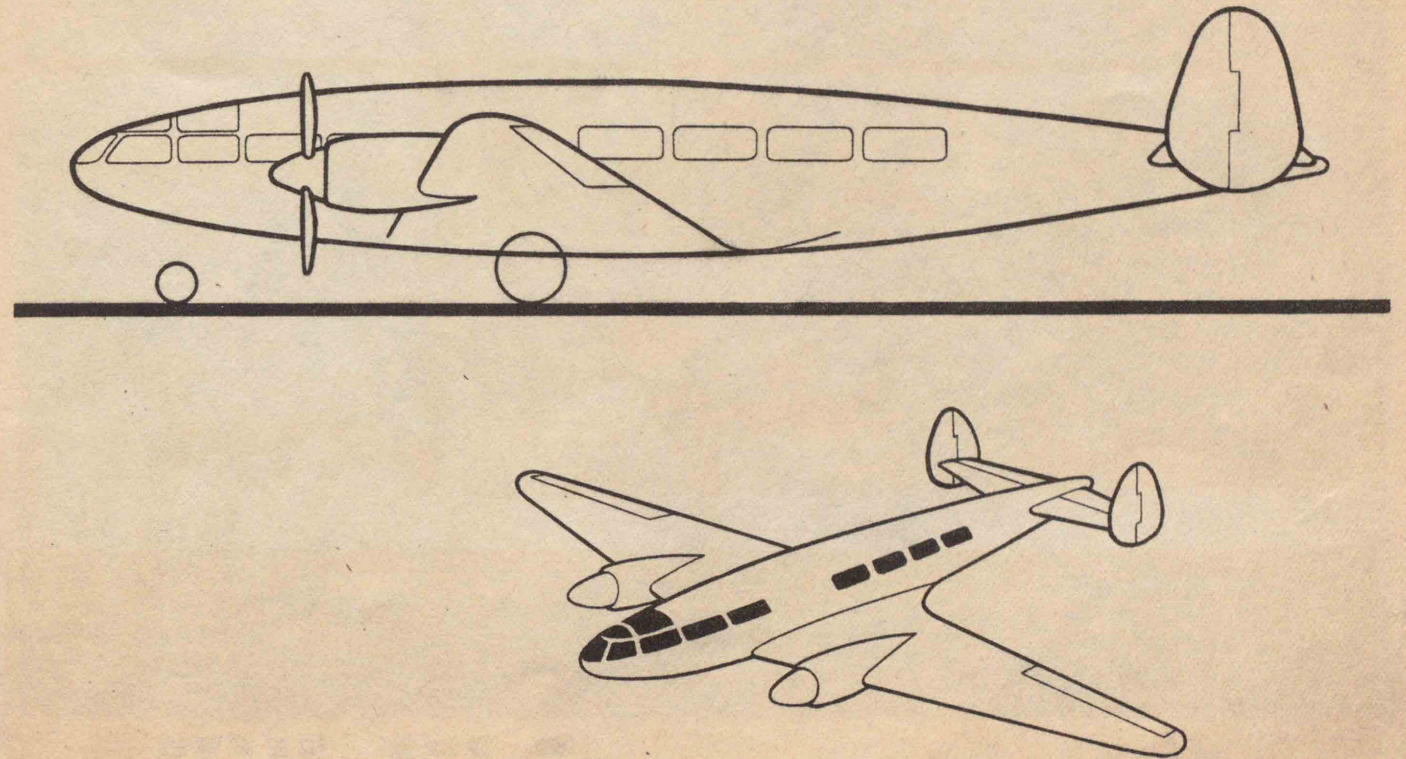
15 自然物の様式化 (二)



16 速度と形體 (一)



16 速度と形體 (二)





牧童(牙彫) 石川光明作



伎藝天(木彫) 竹内久一作



大久保利通像石膏像 大熊氏廣作



楠公像(銅像) 楠公 高村光雲作 馬 後藤貞行作



斥候兵(木彫) 新海竹太郎作

圖畫 1 (中等學校女子用)

昭和18年12月27日印刷
昭和18年12月31日發行

定價 58 錢

著作權所有

著作兼發行者	東京都神田區岩本町三番地 中等學校教科書株式會社 代表者 山本慶治
印刷者	東京都牛込區市谷加賀町一丁目十二番地 大日本印刷株式會社 (東東一) 代表者 佐久間長吉郎
配給元	東京都神田區淡路町二丁目九番地 日本出版配給株式會社

(略名) 中教圖書女1

發行所	東京都神田區岩本町三番地 中等學校教科書株式會社 日本出版會會員番號 117522
-----	---

繪畫寫眞の複寫複製は海軍省檢閱濟(第1002號)

