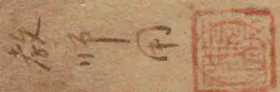


中學校用

數表



Kodak Gray Scale

A 1 2 3 4 5 6 M 8 9 10 11 12 13 14 15 B 17 18 19

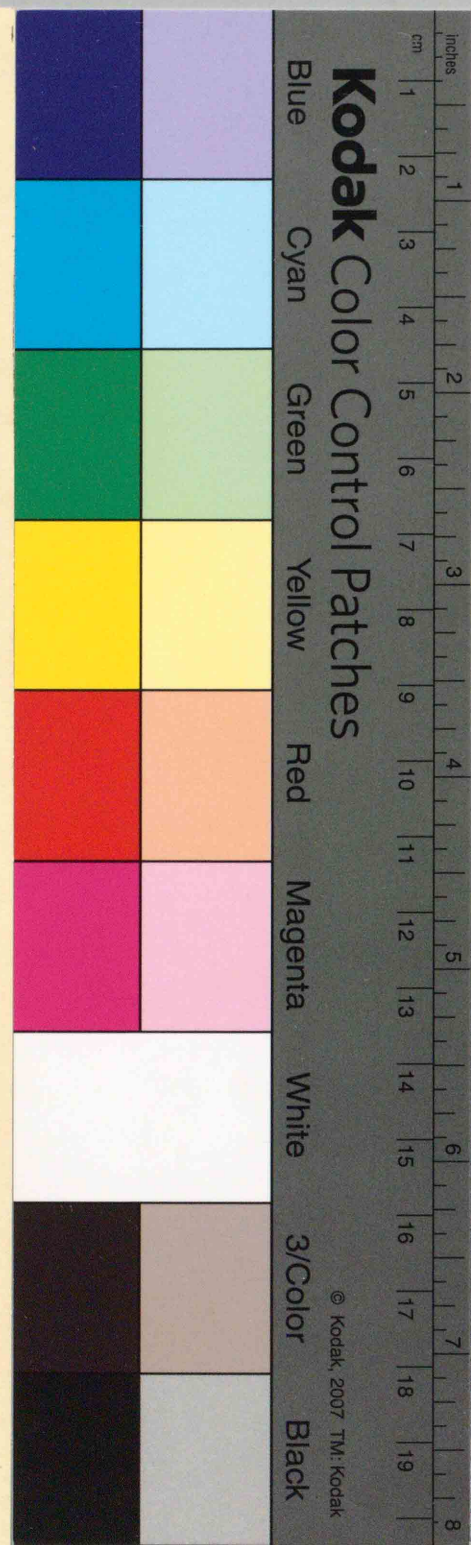


© Kodak, 2007 TM: Kodak

Kodak Color Control Patches

Blue Cyan Green Yellow Red Magenta White 3/Color Black

© Kodak, 2007 TM: Kodak



40083

教科書文庫

4
410
41-1943
01304 49544

47

中央図書館

文部省檢定済

昭和十八年四月九日 中學校理數科用

広島大学図書

0130449544



目次

- 第一表 平方・立方・平方根・立方根・逆數ノ表 (1—100)
- 第二表 平方表 (1.00—9.99)
- 第三表 平方根表 (1.00—999)
- 第四表 數ノ對數表 (1.00—9.99)
- 第五表 正弦ノ表 (0° — 90°)
- 第六表 餘弦ノ表 (0° — 90°)
- 第七表 正接ノ表 (0° — 90°)
- 第八表 尺貫法・ヤード法 度量衡及ヒ度量衡換算表

平方·立方·平方根·立方根·逆數ノ表

數	平方	立方	平方根	立方根	逆數	數	平方	立方	平方根	立方根	逆數
1	1	1	1.0000	1.0000	1.00000	51	2601	132651	7.1414	3.7084	0.01961
2	4	8	1.4142	1.2599	0.50000	52	2704	140608	7.2111	3.7325	0.01923
3	9	27	1.7321	1.4422	0.33333	53	2809	148877	7.2801	3.7563	0.01887
4	16	64	2.0000	1.5874	0.25000	54	2916	157464	7.3485	3.7798	0.01852
5	25	125	2.2361	1.7100	0.20000	55	3025	166375	7.4162	3.8030	0.01818
6	36	216	2.4495	1.8171	0.16667	56	3136	175616	7.4833	3.8259	0.01786
7	49	343	2.6458	1.9129	0.14286	57	3249	185193	7.5498	3.8485	0.01754
8	64	512	2.8284	2.0000	0.12500	58	3364	195112	7.6158	3.8709	0.01724
9	81	729	3.0000	2.0801	0.11111	59	3481	205379	7.6811	3.8930	0.01695
10	100	1000	3.1623	2.1544	0.10000	60	3600	216000	7.7460	3.9149	0.01667
11	121	1331	3.3166	2.2240	0.09091	61	3721	226981	7.8102	3.9365	0.01639
12	144	1728	3.4641	2.2894	0.08333	62	3844	238328	7.8740	3.9579	0.01613
13	169	2197	3.6056	2.3513	0.07692	63	3969	250047	7.9373	3.9791	0.01587
14	196	2744	3.7417	2.4101	0.07143	64	4096	262144	8.0000	4.0000	0.01563
15	225	3375	3.8730	2.4662	0.06667	65	4225	274625	8.0623	4.0207	0.01538
16	256	4096	4.0000	2.5198	0.06250	66	4356	287496	8.1240	4.0412	0.01515
17	289	4913	4.1231	2.5713	0.05882	67	4489	300763	8.1854	4.0615	0.01493
18	324	5832	4.2426	2.6207	0.05556	68	4624	314432	8.2462	4.0817	0.01471
19	361	6859	4.3589	2.6684	0.05263	69	4761	328509	8.3066	4.1016	0.01449
20	400	8000	4.4721	2.7144	0.05000	70	4900	343000	8.3666	4.1213	0.01429
21	441	9261	4.5826	2.7589	0.04762	71	5041	357911	8.4261	4.1408	0.01408
22	484	10648	4.6904	2.8020	0.04545	72	5184	373248	8.4853	4.1602	0.01389
23	529	12167	4.7958	2.8439	0.04348	73	5329	389017	8.5440	4.1793	0.01370

24	576	13824	4.8990	2.8845	0.04167	74	5476	405224	8.6023	4.1983	0.01351
25	625	15625	5.0000	2.9240	0.04000	75	5625	421875	8.6603	4.2172	0.01333
26	676	17576	5.0990	2.9625	0.03846	76	5776	438976	8.7178	4.2358	0.01316
27	729	19683	5.1962	3.0000	0.03704	77	5929	456533	8.7750	4.2543	0.01299
28	784	21952	5.2915	3.0366	0.03571	78	6084	474552	8.8318	4.2727	0.01282
29	841	24389	5.3852	3.0723	0.03448	79	6241	493039	8.8882	4.2908	0.01266
30	900	27000	5.4772	3.1072	0.03333	80	6400	512000	8.9443	4.3089	0.01250
31	961	29791	5.5678	3.1414	0.03226	81	6561	531441	9.0000	4.3267	0.01235
32	1024	32768	5.6569	3.1748	0.03125	82	6724	551368	9.0554	4.3445	0.01220
33	1089	35937	5.7446	3.2075	0.03030	83	6889	571787	9.1104	4.3621	0.01205
34	1156	39304	5.8310	3.2396	0.02941	84	7056	592704	9.1652	4.3795	0.01190
35	1225	42875	5.9161	3.2711	0.02857	85	7225	614125	9.2195	4.3968	0.01176
36	1296	46656	6.0000	3.3019	0.02778	86	7396	636056	9.2736	4.4140	0.01163
37	1369	50653	6.0828	3.3322	0.02703	87	7569	658503	9.3274	4.4310	0.01149
38	1444	54872	6.1644	3.3620	0.02632	88	7744	681472	9.3808	4.4480	0.01136
39	1521	59319	6.2450	3.3912	0.02564	89	7921	704969	9.4340	4.4647	0.01124
40	1600	64000	6.3246	3.4200	0.02500	90	8100	729000	9.4868	4.4814	0.01111
41	1681	68921	6.4031	3.4482	0.02439	91	8281	753371	9.5394	4.4979	0.01099
42	1764	74088	6.4807	3.4760	0.02381	92	8464	778688	9.5917	4.5144	0.01087
43	1849	79507	6.5574	3.5034	0.02326	93	8649	804357	9.6437	4.5307	0.01075
44	1936	85184	6.6332	3.5303	0.02273	94	8836	830584	9.6954	4.5468	0.01064
45	2025	91125	6.7082	3.5569	0.02222	95	9025	857375	9.7468	4.5629	0.01053
46	2116	97336	6.7823	3.5830	0.02174	96	9216	884736	9.7980	4.5789	0.01042
47	2209	103823	6.8557	3.6088	0.02128	97	9409	912673	9.8489	4.5947	0.01031
48	2304	110592	6.9282	3.6342	0.02083	98	9604	941192	9.8995	4.6104	0.01020
49	2401	117649	7.0000	3.6593	0.02041	99	9801	970299	9.9499	4.6261	0.01010
50	2500	125000	7.0711	3.6840	0.02000	100	10000	1000000	10.0000	4.6416	0.01000

5.76.
1.00
5.76.

〔第 二 方 表〕 (一)

數	0	1	2	3	4	5	6	7	8	9
1.0	1.0000	1.0201	1.0404	1.0609	1.0816	1.1025	1.1236	1.1449	1.1664	1.1881
1.1	1.2100	1.2321	1.2544	1.2769	1.2996	1.3225	1.3456	1.3689	1.3924	1.4161
1.2	1.4400	1.4641	1.4884	1.5129	1.5376	1.5625	1.5876	1.6129	1.6384	1.6641
1.3	1.6900	1.7161	1.7424	1.7689	1.7956	1.8225	1.8496	1.8769	1.9044	1.9321
1.4	1.9600	1.9881	2.0164	2.0449	2.0736	2.1025	2.1316	2.1609	2.1904	2.2201
1.5	2.2500	2.2801	2.3104	2.3409	2.3716	2.4025	2.4336	2.4649	2.4964	2.5281
1.6	2.5600	2.5921	2.6244	2.6569	2.6896	2.7225	2.7556	2.7889	2.8224	2.8561
1.7	2.8900	2.9241	2.9584	2.9929	3.0276	3.0625	3.0976	3.1329	3.1684	3.2041
1.8	3.2400	3.2761	3.3124	3.3489	3.3856	3.4225	3.4596	3.4969	3.5344	3.5721
1.9	3.6100	3.6481	3.6864	3.7249	3.7636	3.8025	3.8416	3.8809	3.9204	3.9601
2.0	4.0000	4.0401	4.0804	4.1209	4.1616	4.2025	4.2436	4.2849	4.3264	4.3681
2.1	4.4100	4.4521	4.4944	4.5369	4.5796	4.6225	4.6656	4.7089	4.7524	4.7961
2.2	4.8400	4.8841	4.9284	4.9729	5.0176	5.0625	5.1076	5.1529	5.1984	5.2441
2.3	5.2900	5.3361	5.3824	5.4289	5.4756	5.5225	5.5696	5.6169	5.6644	5.7121
2.4	5.7600	5.8081	5.8564	5.9049	5.9536	6.0025	6.0516	6.1009	6.1504	6.2001
2.5	6.2500	6.3001	6.3504	6.4009	6.4516	6.5025	6.5536	6.6049	6.6564	6.7081
2.6	6.7600	6.8121	6.8644	6.9169	6.9696	7.0225	7.0756	7.1289	7.1824	7.2361
2.7	7.2900	7.3441	7.3984	7.4529	7.5076	7.5625	7.6176	7.6729	7.7284	7.7841
2.8	7.8400	7.8961	7.9524	8.0089	8.0656	8.1225	8.1796	8.2369	8.2944	8.3521
2.9	8.4100	8.4681	8.5264	8.5849	8.6436	8.7025	8.7616	8.8209	8.8804	8.9401

3.0	9.0000	9.0601	9.1204	9.1809	9.2416	9.3025	9.3636	9.4249	9.4864	9.5481
3.1	9.6100	9.6721	9.7344	9.7969	9.8596	9.9225	9.9856	10.0489	10.1124	10.1761
3.2	10.2400	10.3041	10.3684	10.4329	10.4976	10.5625	10.6276	10.6929	10.7584	10.8241
3.3	10.8900	10.9561	11.0224	11.0889	11.1556	11.2225	11.2896	11.3569	11.4244	11.4921
3.4	11.5600	11.6281	11.6964	11.7649	11.8336	11.9025	11.9716	12.0409	12.1104	12.1801
3.5	12.2500	12.3201	12.3904	12.4609	12.5316	12.6025	12.6736	12.7449	12.8164	12.8881
3.6	12.9600	13.0321	13.1044	13.1769	13.2496	13.3225	13.3956	13.4689	13.5424	13.6161
3.7	13.6900	13.7641	13.8384	13.9129	13.9876	14.0625	14.1376	14.2129	14.2884	14.3641
3.8	14.4400	14.5161	14.5924	14.6689	14.7456	14.8225	14.8996	14.9769	15.0544	15.1321
3.9	15.2100	15.2881	15.3664	15.4449	15.5236	15.6025	15.6816	15.7609	15.8404	15.9201
4.0	16.0000	16.0801	16.1604	16.2409	16.3216	16.4025	16.4836	16.5649	16.6464	16.7281
4.1	16.8100	16.8921	16.9744	17.0569	17.1396	17.2225	17.3056	17.3889	17.4724	17.5561
4.2	17.6400	17.7241	17.8084	17.8929	17.9776	18.0625	18.1476	18.2329	18.3184	18.4041
4.3	18.4900	18.5761	18.6624	18.7489	18.8356	18.9225	19.0096	19.0969	19.1844	19.2721
4.4	19.3600	19.4481	19.5364	19.6249	19.7136	19.8025	19.8916	19.9809	20.0704	20.1601
4.5	20.2500	20.3401	20.4304	20.5209	20.6116	20.7025	20.7936	20.8849	20.9764	21.0681
4.6	21.1600	21.2521	21.3444	21.4369	21.5296	21.6225	21.7156	21.8089	21.9024	21.9961
4.7	22.0900	22.1841	22.2784	22.3729	22.4676	22.5625	22.6576	22.7529	22.8484	22.9441
4.8	23.0400	23.1361	23.2324	23.3289	23.4256	23.5225	23.6196	23.7169	23.8144	23.9121
4.9	24.0100	24.1081	24.2064	24.3049	24.4036	24.5025	24.6016	24.7009	24.8004	24.9001
5.0	25.0000	25.1001	25.2004	25.3009	25.4016	25.5025	25.6036	25.7049	25.8064	25.9081
5.1	26.0100	26.1121	26.2144	26.3169	26.4196	26.5225	26.6256	26.7289	26.8324	26.9361
5.2	27.0400	27.1441	27.2484	27.3529	27.4576	27.5625	27.6676	27.7729	27.8784	27.9841
5.3	28.0900	28.1961	28.3024	28.4089	28.5156	28.6225	28.7296	28.8369	28.9444	29.0521
5.4	29.1600	29.2681	29.3764	29.4849	29.5936	29.7025	29.8116	29.9209	30.0304	30.1401

〔第 二 方 表〕 (二)

數	0	1	2	3	4	5	6	7	4	9
5.5	30.2500	30.3601	30.4704	30.5809	30.6916	30.8025	30.9136	31.0249	31.1364	31.2481
5.6	31.3600	31.4721	31.5844	31.6969	31.8096	31.9225	32.0356	32.1489	32.2624	32.3761
5.7	32.4900	32.6041	32.7184	32.8329	32.9476	33.0625	33.1776	33.2929	33.4084	33.5241
5.8	33.6400	33.7561	33.8724	33.9889	34.1056	34.2225	34.3396	34.4569	34.5744	34.6821
5.9	34.8100	34.9281	35.0464	35.1649	35.2836	35.4025	35.5216	35.6409	35.7604	35.8801
6.0	36.0000	36.1201	36.2404	36.3609	36.4816	36.6025	36.7236	36.8449	36.9664	37.0881
6.1	37.2100	37.3321	37.4544	37.5769	37.6996	37.8225	37.9456	38.0689	38.1924	38.3161
6.2	38.4400	38.5641	38.6884	38.8129	38.9376	39.0625	39.1876	39.3129	39.4384	39.5641
6.3	39.6900	39.8161	39.9424	40.0689	40.1956	40.3225	40.4496	40.5769	40.7044	40.8321
6.4	40.9600	41.0881	41.2164	41.3449	41.4736	41.6025	41.7316	41.8609	41.9904	42.1201
6.5	42.2500	42.3801	42.5104	42.6409	42.7716	42.9025	43.0336	43.1649	43.2964	43.4281
6.6	43.5600	43.6921	43.8244	43.9569	44.0896	44.2225	44.3556	44.4889	44.6224	44.7561
6.7	44.8900	45.0241	45.1594	45.2929	45.4276	45.5625	45.6976	45.8329	45.9684	46.1041
6.8	46.2400	46.3761	46.5124	46.6489	46.7856	46.9225	47.0596	47.1969	47.3344	47.4721
6.9	47.6100	47.7481	47.8864	48.0249	48.1636	48.3035	48.4416	48.5809	48.7204	48.8601
7.0	49.0000	49.1401	49.2804	49.4209	49.5616	49.7025	49.8436	49.9849	50.1264	50.2681
7.1	50.4100	50.5521	50.6944	50.8369	50.9796	51.1225	51.2656	51.4089	51.5524	51.6961
7.2	51.8400	51.9841	52.1284	52.2729	52.4176	52.5625	52.7076	52.8529	52.9984	53.1441
7.3	53.2900	53.4361	53.5824	53.7289	53.8756	54.0225	54.1696	54.3169	54.4644	54.6121
7.4	54.7600	54.9081	55.0564	55.2049	55.3536	55.5025	55.6516	55.8009	55.9504	56.1001

7.5	56.2500	56.4001	56.5504	56.7009	56.8516	57.0025	57.1536	57.3049	57.4564	57.6081
7.6	57.7600	57.9121	58.0644	58.2169	58.3696	58.5225	58.6756	58.8289	58.9824	59.1361
7.7	59.2900	59.4441	59.5984	59.7529	59.9076	60.0625	60.2176	60.3729	60.5284	60.6841
7.8	60.8400	60.9961	61.1524	61.3089	61.4656	61.6225	61.7796	61.9369	62.0944	62.2521
7.9	62.4100	62.5681	62.7264	62.8849	63.0436	63.2025	63.3616	63.5209	63.6804	63.8401
8.0	64.0000	64.1601	64.3204	64.4809	64.6416	64.8025	64.9636	65.1249	65.2864	65.4481
8.1	65.6100	65.7721	65.9344	66.0969	66.2596	66.4225	66.5856	66.7489	66.9124	67.0761
8.2	67.2400	67.4041	67.5684	67.7329	67.8976	68.0625	68.2276	68.3929	68.5584	68.7241
8.3	68.8900	69.0561	69.2224	69.3889	69.5556	69.7225	69.8896	70.0569	70.2244	70.3921
8.4	70.5600	70.7281	70.8964	71.0649	71.2336	71.4025	71.5716	71.7409	71.9104	72.0811
8.5	72.2500	72.4201	72.5904	72.7609	72.9316	73.1025	73.2736	73.4449	73.6164	73.7881
8.6	73.9600	74.1321	74.3044	74.4769	74.6496	74.8225	74.9956	75.1689	75.3424	75.5161
8.7	75.6900	75.8641	76.0384	76.2129	76.3876	76.5625	76.7376	76.9129	77.0884	77.2641
8.8	77.4400	77.6161	77.7924	77.9689	78.1456	78.3225	78.4996	78.6769	78.8544	79.0321
8.9	79.2100	79.3881	79.5664	79.7449	79.9236	80.1025	80.2816	80.4609	80.6404	80.8201
9.0	81.0000	81.1801	81.3604	81.5409	81.7216	81.9025	82.0836	82.2649	82.4464	82.6281
9.1	82.8100	82.9921	83.1744	83.3569	83.5396	83.7225	83.9056	84.0889	84.2724	84.4561
9.2	84.6400	84.8241	85.0084	85.1929	85.3776	85.5625	85.7476	85.9329	86.1184	86.3041
9.3	86.4900	86.6761	86.8624	87.0489	87.2356	87.4225	87.6096	87.7969	87.9844	88.1721
9.4	88.3600	88.5481	88.7364	88.9249	89.1136	89.3025	89.4916	89.6809	89.8704	90.0601
9.5	90.2500	90.4401	90.6304	90.8209	91.0116	91.2025	91.3936	91.5849	91.7764	91.9681
9.6	92.1600	92.3521	92.5444	92.7369	92.9296	93.1225	93.3156	93.5089	93.7024	93.8961
9.7	94.0900	94.2841	94.4784	94.6729	94.8676	95.0625	95.2576	95.4529	95.6484	95.8441
9.8	96.0400	96.2361	96.4324	96.6289	96.8256	97.0225	97.2196	97.4169	97.6144	97.8121
9.9	98.0100	98.2081	98.4064	98.6049	98.8036	99.0025	99.2016	99.4009	99.6004	99.8001

〔第 三 表〕
平 方 根 表 (一)

數	0	1	2	3	4	5	6	7	8	9	1 2 3	4 5 6	7 8 9
1.0	1.000	1.005	1.010	1.015	1.020	1.025	1.030	1.034	1.039	1.044	0 1 1	2 2 3	3 4 4
1.1	1.049	1.054	1.058	1.063	1.068	1.072	1.077	1.082	1.086	1.091	0 1 1	2 2 3	3 4 4
1.2	1.095	1.100	1.105	1.109	1.114	1.118	1.122	1.127	1.131	1.136	0 1 1	2 2 3	3 4 4
1.3	1.140	1.145	1.149	1.153	1.158	1.162	1.166	1.170	1.175	1.179	0 1 1	2 2 3	3 3 4
1.4	1.183	1.187	1.192	1.196	1.200	1.204	1.208	1.212	1.217	1.221	0 1 1	2 2 2	3 3 4
1.5	1.225	1.229	1.233	1.237	1.241	1.245	1.249	1.253	1.257	1.261	0 1 1	2 2 2	3 3 4
1.6	1.265	1.269	1.273	1.277	1.281	1.285	1.288	1.292	1.296	1.300	0 1 1	2 2 2	3 3 4
1.7	1.304	1.308	1.311	1.315	1.319	1.323	1.327	1.330	1.334	1.338	0 1 1	2 2 2	3 3 3
1.8	1.342	1.345	1.349	1.353	1.356	1.360	1.364	1.367	1.371	1.375	0 1 1	1 2 2	3 3 3
1.9	1.378	1.382	1.386	1.389	1.393	1.396	1.400	1.404	1.407	1.411	0 1 1	1 2 2	3 3 3
2.0	1.414	1.418	1.421	1.425	1.428	1.432	1.435	1.439	1.442	1.446	0 1 1	1 2 2	2 3 3
2.1	1.449	1.453	1.456	1.459	1.463	1.466	1.470	1.473	1.476	1.480	0 1 1	1 2 2	2 3 3
2.2	1.483	1.487	1.490	1.493	1.497	1.500	1.503	1.507	1.510	1.513	0 1 1	1 2 2	2 3 3
2.3	1.517	1.520	1.523	1.526	1.530	1.533	1.536	1.539	1.543	1.546	0 1 1	1 2 2	2 3 3
2.4	1.549	1.552	1.556	1.559	1.562	1.565	1.568	1.572	1.575	1.578	0 1 1	1 2 2	2 3 3
2.5	1.581	1.584	1.587	1.591	1.594	1.597	1.600	1.603	1.606	1.609	0 1 1	1 2 2	2 3 3
2.6	1.612	1.616	1.619	1.622	1.625	1.628	1.631	1.634	1.637	1.640	0 1 1	1 2 2	2 2 3
2.7	1.643	1.646	1.649	1.652	1.655	1.658	1.661	1.664	1.667	1.670	0 1 1	1 2 2	2 2 3
2.8	1.673	1.676	1.679	1.682	1.685	1.688	1.691	1.694	1.697	1.700	0 1 1	1 1 2	2 2 3
2.9	1.703	1.706	1.709	1.712	1.715	1.718	1.720	1.723	1.726	1.729	0 1 1	1 1 2	2 2 3

3.0	1.732	1.735	1.738	1.741	1.744	1.746	1.749	1.752	1.755	1.758	0 1 1	1 1 2	2 2 3
3.1	1.761	1.764	1.766	1.769	1.772	1.775	1.778	1.780	1.783	1.786	0 1 1	1 1 2	2 2 3
3.2	1.789	1.792	1.794	1.797	1.800	1.803	1.806	1.808	1.811	1.814	0 1 1	1 1 2	2 2 2
3.3	1.817	1.819	1.822	1.825	1.828	1.830	1.833	1.836	1.838	1.841	0 1 1	1 1 2	2 2 2
3.4	1.844	1.847	1.849	1.852	1.855	1.857	1.860	1.863	1.865	1.868	0 1 1	1 1 2	2 2 2
3.5	1.871	1.873	1.876	1.879	1.881	1.884	1.887	1.889	1.892	1.895	0 1 1	1 1 2	2 2 2
3.6	1.897	1.900	1.903	1.905	1.908	1.910	1.913	1.916	1.918	1.921	0 1 1	1 1 2	2 2 2
3.7	1.924	1.926	1.929	1.931	1.934	1.936	1.939	1.942	1.944	1.947	0 1 1	1 1 2	2 2 2
3.8	1.949	1.952	1.954	1.957	1.960	1.962	1.965	1.967	1.970	1.972	0 1 1	1 1 2	2 2 2
3.9	1.975	1.977	1.980	1.982	1.985	1.987	1.990	1.992	1.995	1.997	0 1 1	1 1 2	2 2 2
4.0	2.000	2.002	2.005	2.007	2.010	2.012	2.015	2.017	2.020	2.022	0 0 1	1 1 1	2 2 2
4.1	2.025	2.027	2.030	2.032	2.035	2.037	2.040	2.042	2.045	2.047	0 0 1	1 1 1	2 2 2
4.2	2.049	2.052	2.054	2.057	2.059	2.062	2.064	2.066	2.069	2.071	0 0 1	1 1 1	2 2 2
4.3	2.074	2.076	2.078	2.081	2.083	2.086	2.088	2.090	2.093	2.095	0 0 1	1 1 1	2 2 2
4.4	2.098	2.100	2.102	2.105	2.107	2.110	2.112	2.114	2.117	2.119	0 0 1	1 1 1	2 2 2
4.5	2.121	2.124	2.126	2.128	2.131	2.133	2.135	2.138	2.140	2.142	0 0 1	1 1 1	2 2 2
4.6	2.145	2.147	2.149	2.152	2.154	2.156	2.159	2.161	2.163	2.166	0 0 1	1 1 1	2 2 2
4.7	2.168	2.170	2.173	2.175	2.177	2.179	2.182	2.184	2.186	2.189	0 0 1	1 1 1	2 2 2
4.8	2.191	2.193	2.195	2.198	2.200	2.202	2.205	2.207	2.209	2.211	0 0 1	1 1 1	2 2 2
4.9	2.214	2.216	2.218	2.220	2.223	2.225	2.227	2.229	2.232	2.234	0 0 1	1 1 1	2 2 2
5.0	2.236	2.238	2.241	2.243	2.245	2.247	2.249	2.252	2.254	2.256	0 0 1	1 1 1	2 2 2
5.1	2.258	2.261	2.263	2.265	2.267	2.269	2.272	2.274	2.276	2.278	0 0 1	1 1 1	2 2 2
5.2	2.280	2.283	2.285	2.287	2.289	2.291	2.293	2.296	2.298	2.300	0 0 1	1 1 1	2 2 2
5.3	2.302	2.304	2.307	2.309	2.311	2.313	2.315	2.317	2.319	2.322	0 0 1	1 1 1	2 2 2
5.4	2.324	2.326	2.328	2.330	2.332	2.335	2.337	2.339	2.341	2.343	0 0 1	1 1 1	1 2 2

[第 三 表] 平 方 根 表 (二)

數	10												
	0	1	2	3	4	5	6	7	8	9	123	456	789
5.5	2.345	2.347	2.349	2.352	2.354	2.356	2.358	2.360	2.362	2.364	0 0 1	1 1 1	1 2 2
5.6	2.366	2.369	2.371	2.373	2.375	2.377	2.379	2.381	2.383	2.385	0 0 1	1 1 1	1 2 2
5.7	2.387	2.390	2.392	2.394	2.396	2.398	2.400	2.402	2.404	2.406	0 0 1	1 1 1	1 2 2
5.8	2.408	2.410	2.412	2.415	2.417	2.419	2.421	2.423	2.425	2.427	0 0 1	1 1 1	1 2 2
5.9	2.429	2.431	2.433	2.435	2.437	2.439	2.441	2.443	2.445	2.447	0 0 1	1 1 1	1 2 2
6.0	2.449	2.452	2.454	2.456	2.458	2.460	2.462	2.464	2.466	2.468	0 0 1	1 1 1	1 2 2
6.1	2.470	2.472	2.474	2.476	2.478	2.480	2.482	2.484	2.486	2.488	0 0 1	1 1 1	1 2 2
6.2	2.490	2.492	2.494	2.496	2.498	2.500	2.502	2.504	2.506	2.508	0 0 1	1 1 1	1 2 2
6.3	2.510	2.512	2.514	2.516	2.518	2.520	2.522	2.524	2.526	2.528	0 0 1	1 1 1	1 2 2
6.4	2.530	2.532	2.534	2.536	2.538	2.540	2.542	2.544	2.546	2.548	0 0 1	1 1 1	1 2 2
6.5	2.550	2.551	2.553	2.555	2.557	2.559	2.561	2.563	2.565	2.567	0 0 1	1 1 1	1 2 2
6.6	2.569	2.571	2.573	2.575	2.577	2.579	2.581	2.583	2.585	2.587	0 0 1	1 1 1	1 2 2
6.7	2.588	2.590	2.592	2.594	2.596	2.598	2.600	2.602	2.604	2.606	0 0 1	1 1 1	1 2 2
6.8	2.608	2.610	2.612	2.613	2.615	2.617	2.619	2.621	2.623	2.625	0 0 1	1 1 1	1 2 2
6.9	2.627	2.629	2.631	2.632	2.634	2.636	2.638	2.640	2.642	2.644	0 0 1	1 1 1	1 2 2
7.0	2.646	2.648	2.650	2.651	2.653	2.655	2.657	2.659	2.661	2.663	0 0 1	1 1 1	1 2 2
7.1	2.665	2.666	2.668	2.670	2.672	2.674	2.676	2.678	2.680	2.681	0 0 1	1 1 1	1 1 2
7.2	2.683	2.685	2.687	2.689	2.691	2.693	2.694	2.696	2.698	2.700	0 0 1	1 1 1	1 1 2
7.3	2.702	2.704	2.706	2.707	2.709	2.711	2.713	2.715	2.717	2.718	0 0 1	1 1 1	1 1 2
7.4	2.720	2.722	2.724	2.726	2.728	2.729	2.731	2.733	2.735	2.737	0 0 1	1 1 1	1 1 2

7.5	2.739	2.740	2.742	2.744	2.746	2.748	2.750	2.751	2.753	2.755	0 0 1	1 1 1	1 1 2
7.6	2.757	2.759	2.760	2.762	2.764	2.766	2.768	2.769	2.771	2.773	0 0 1	1 1 1	1 1 2
7.7	2.775	2.777	2.778	2.780	2.782	2.784	2.786	2.787	2.789	2.791	0 0 1	1 1 1	1 1 2
7.8	2.793	2.795	2.796	2.798	2.800	2.802	2.804	2.805	2.807	2.809	0 0 1	1 1 1	1 1 2
7.9	2.811	2.812	2.814	2.816	2.818	2.820	2.821	2.823	2.825	2.827	0 0 1	1 1 1	1 1 2
8.0	2.828	2.830	2.832	2.834	2.835	2.837	2.839	2.841	2.843	2.844	0 0 1	1 1 1	1 1 2
8.1	2.846	2.848	2.850	2.851	2.853	2.855	2.857	2.858	2.860	2.862	0 0 1	1 1 1	1 1 2
8.2	2.864	2.865	2.867	2.869	2.871	2.872	2.874	2.876	2.877	2.879	0 0 1	1 1 1	1 1 2
8.3	2.881	2.883	2.884	2.886	2.888	2.890	2.891	2.893	2.895	2.897	0 0 1	1 1 1	1 1 2
8.4	2.898	2.900	2.902	2.903	2.905	2.907	2.909	2.910	2.912	2.914	0 0 1	1 1 1	1 1 2
8.5	2.915	2.917	2.919	2.921	2.922	2.924	2.926	2.927	2.929	2.931	0 0 1	1 1 1	1 1 2
8.6	2.933	2.934	2.936	2.938	2.939	2.941	2.943	2.944	2.946	2.948	0 0 1	1 1 1	1 1 2
8.7	2.950	2.951	2.953	2.955	2.956	2.958	2.960	2.961	2.963	2.965	0 0 1	1 1 1	1 1 2
8.8	2.966	2.968	2.970	2.972	2.973	2.975	2.977	2.978	2.980	2.982	0 0 1	1 1 1	1 1 2
8.9	2.983	2.985	2.987	2.988	2.990	2.992	2.993	2.995	2.997	2.998	0 0 1	1 1 1	1 1 2
9.0	3.000	3.002	3.003	3.005	3.007	3.008	3.010	3.012	3.013	3.015	0 0 0	1 1 1	1 1 1
9.1	3.017	3.018	3.020	3.022	3.023	3.025	3.027	3.028	3.030	3.032	0 0 0	1 1 1	1 1 1
9.2	3.033	3.035	3.036	3.038	3.040	3.041	3.043	3.045	3.046	3.048	0 0 0	1 1 1	1 1 1
9.3	3.050	3.051	3.053	3.055	3.056	3.058	3.059	3.061	3.063	3.064	0 0 0	1 1 1	1 1 1
9.4	3.066	3.068	3.069	3.071	3.072	3.074	3.076	3.077	3.079	3.081	0 0 0	1 1 1	1 1 1
9.5	3.082	3.084	3.085	3.087	3.089	3.090	3.092	3.094	3.095	3.097	0 0 0	1 1 1	1 1 1
9.6	3.098	3.100	3.102	3.103	3.105	3.106	3.108	3.110	3.111	3.113	0 0 0	1 1 1	1 1 1
9.7	3.114	3.116	3.118	3.119	3.121	3.122	3.124	3.126	3.127	3.129	0 0 0	1 1 1	1 1 1
9.8	3.130	3.132	3.134	3.135	3.137	3.138	3.140	3.142	3.143	3.145	0 0 0	1 1 1	1 1 1
9.9	3.146	3.148	3.150	3.151	3.153	3.154	3.156	3.158	3.159	3.161	0 0 0	1 1 1	1 1 1

5行
 3.225
 3.194
 $\sqrt[3]{10.19} = 3.192$
 $\sqrt[3]{10.20} = 3.193$
 $\sqrt[3]{10.195}$

表三 平方根表 (三)

數	12										
	0	1	2	3	4	5	6	7	8	9	
10	3.162	3.178	3.194	3.209	3.225	3.240	3.256	3.271	3.286	3.302	1 2 3 4 5 6 7 8 9
11	3.317	3.332	3.347	3.362	3.376	3.391	3.406	3.421	3.435	3.450	1 1 12 14
12	3.464	3.479	3.493	3.507	3.521	3.536	3.550	3.564	3.578	3.592	10 12 13
13	3.606	3.619	3.633	3.647	3.661	3.674	3.688	3.701	3.715	3.728	10 11 13
14	3.742	3.755	3.768	3.782	3.795	3.808	3.821	3.834	3.847	3.860	10 11 12
15	3.873	3.886	3.899	3.912	3.924	3.937	3.950	3.962	3.975	3.987	9 11 12
16	4.000	4.012	4.025	4.037	4.050	4.062	4.074	4.087	4.099	4.111	9 10 11
17	4.123	4.135	4.147	4.159	4.171	4.183	4.195	4.207	4.219	4.231	8 10 11
18	4.243	4.254	4.266	4.278	4.290	4.301	4.313	4.324	4.336	4.347	8 9 10
19	4.359	4.370	4.382	4.393	4.405	4.416	4.427	4.438	4.450	4.461	8 9 10
20	4.472	4.483	4.494	4.506	4.517	4.528	4.539	4.550	4.561	4.572	8 9 10
21	4.583	4.593	4.604	4.615	4.626	4.637	4.648	4.658	4.669	4.680	8 9 10
22	4.690	4.701	4.712	4.722	4.733	4.743	4.754	4.764	4.775	4.785	7 8 9
23	4.796	4.806	4.817	4.827	4.837	4.848	4.858	4.868	4.879	4.889	7 8 9
24	4.899	4.909	4.919	4.930	4.940	4.950	4.960	4.970	4.980	4.990	7 8 9
25	5.000	5.010	5.020	5.030	5.040	5.050	5.060	5.070	5.079	5.089	7 8 9
26	5.099	5.109	5.119	5.128	5.138	5.148	5.158	5.167	5.177	5.187	7 8 9
27	5.196	5.206	5.215	5.225	5.235	5.244	5.254	5.263	5.273	5.282	7 8 9
28	5.292	5.301	5.310	5.320	5.329	5.339	5.348	5.357	5.367	5.376	7 7 8
29	5.385	5.394	5.404	5.413	5.422	5.431	5.441	5.450	5.459	5.468	6 7 8

30	5.477	5.486	5.495	5.505	5.514	5.523	5.532	5.541	5.550	5.559	1 2 3 4 4 5
31	5.568	5.577	5.586	5.595	5.604	5.612	5.621	5.630	5.639	5.648	1 2 3 4 5
32	5.657	5.666	5.675	5.683	5.692	5.701	5.710	5.718	5.727	5.736	1 2 3 4 5
33	5.745	5.753	5.762	5.771	5.779	5.788	5.797	5.805	5.814	5.822	1 2 3 4 5
34	5.831	5.840	5.848	5.857	5.865	5.874	5.882	5.891	5.899	5.908	1 2 3 4 5
35	5.916	5.925	5.933	5.941	5.950	5.958	5.967	5.975	5.983	5.992	1 2 2 3 4 5
36	6.000	6.008	6.017	6.025	6.033	6.042	6.050	6.058	6.066	6.075	1 2 2 3 4 5
37	6.083	6.091	6.099	6.107	6.116	6.124	6.132	6.140	6.148	6.156	1 2 2 3 4 5
38	6.164	6.173	6.181	6.189	6.197	6.205	6.213	6.221	6.229	6.237	1 2 2 3 4 5
39	6.245	6.253	6.261	6.269	6.277	6.285	6.293	6.301	6.309	6.317	1 2 2 3 4 5
40	6.325	6.332	6.340	6.348	6.356	6.364	6.372	6.380	6.387	6.395	1 2 2 3 4 5
41	6.403	6.411	6.419	6.427	6.434	6.442	6.450	6.458	6.465	6.473	1 2 2 3 4 5
42	6.481	6.488	6.496	6.504	6.512	6.519	6.527	6.535	6.542	6.550	1 2 2 3 4 5
43	6.557	6.565	6.573	6.580	6.588	6.595	6.603	6.611	6.618	6.626	1 2 2 3 4 5
44	6.633	6.641	6.648	6.656	6.663	6.671	6.678	6.686	6.693	6.701	1 2 2 3 4 5
45	6.708	6.716	6.723	6.731	6.738	6.745	6.753	6.760	6.768	6.775	1 1 2 3 4 4
46	6.782	6.790	6.797	6.804	6.812	6.819	6.826	6.834	6.841	6.848	1 1 2 3 4 4
47	6.856	6.863	6.870	6.877	6.885	6.892	6.899	6.907	6.914	6.921	1 1 2 3 4 4
48	6.928	6.935	6.943	6.950	6.957	6.964	6.971	6.979	6.986	6.993	1 1 2 3 4 4
49	7.000	7.007	7.014	7.021	7.029	7.036	7.043	7.050	7.057	7.064	1 1 2 3 4 4
50	7.071	7.078	7.085	7.092	7.099	7.106	7.113	7.120	7.127	7.134	1 1 2 3 4 4
51	7.141	7.148	7.155	7.162	7.169	7.176	7.183	7.190	7.197	7.204	1 1 2 3 4 4
52	7.211	7.218	7.225	7.232	7.239	7.246	7.253	7.259	7.266	7.273	1 1 2 3 3 4
53	7.280	7.287	7.294	7.301	7.308	7.314	7.321	7.328	7.335	7.342	1 1 2 3 3 4
54	7.348	7.355	7.362	7.369	7.376	7.382	7.389	7.396	7.403	7.409	1 1 2 3 3 4

25
 80
 5.831
 2.169

[第三表]
平方根表 (四)

數	0	1	2	3	4	5	6	7	8	9	123	456	789
55	7.416	7.423	7.430	7.436	7.443	7.450	7.457	7.463	7.470	7.477	1 1 2	3 3 4	5 5 6
56	7.483	7.490	7.497	7.503	7.510	7.517	7.523	7.530	7.537	7.543	1 1 2	3 3 4	5 5 6
57	7.550	7.556	7.563	7.570	7.576	7.583	7.589	7.596	7.603	7.609	1 1 2	3 3 4	5 5 6
58	7.616	7.622	7.629	7.635	7.642	7.649	7.655	7.662	7.668	7.675	1 1 2	3 3 4	5 5 6
59	7.681	7.688	7.694	7.701	7.707	7.714	7.720	7.727	7.733	7.740	1 1 2	3 3 4	4 5 6
60	7.746	7.752	7.759	7.765	7.772	7.778	7.785	7.791	7.797	7.804	1 1 2	3 3 4	4 5 6
61	7.810	7.817	7.823	7.829	7.836	7.842	7.849	7.855	7.861	7.868	1 1 2	3 3 4	4 5 6
62	7.874	7.880	7.887	7.893	7.899	7.906	7.912	7.918	7.925	7.931	1 1 2	3 3 4	4 5 6
63	7.937	7.944	7.950	7.956	7.962	7.969	7.975	7.981	7.987	7.994	1 1 2	3 3 4	4 5 6
64	8.000	8.006	8.012	8.019	8.025	8.031	8.037	8.044	8.050	8.056	1 1 2	2 3 4	4 5 6
65	8.062	8.068	8.075	8.081	8.087	8.093	8.099	8.106	8.112	8.118	1 1 2	2 3 4	4 5 5
66	8.124	8.130	8.136	8.142	8.149	8.155	8.161	8.167	8.173	8.179	1 1 2	2 3 4	4 5 5
67	8.185	8.191	8.198	8.204	8.210	8.216	8.222	8.228	8.234	8.240	1 1 2	2 3 4	4 5 5
68	8.246	8.252	8.258	8.264	8.270	8.276	8.283	8.289	8.295	8.301	1 1 2	2 3 4	4 5 5
69	8.307	8.313	8.319	8.325	8.331	8.337	8.343	8.349	8.355	8.361	1 1 2	2 3 4	4 5 5
70	8.367	8.373	8.379	8.385	8.390	8.396	8.402	8.408	8.414	8.420	1 1 2	2 3 4	4 5 5
71	8.426	8.432	8.438	8.444	8.450	8.456	8.462	8.468	8.473	8.479	1 1 2	2 3 4	4 5 5
72	8.485	8.491	8.497	8.503	8.509	8.515	8.521	8.526	8.532	8.538	1 1 2	2 3 3	4 5 5
73	8.544	8.550	8.556	8.562	8.567	8.573	8.579	8.585	8.591	8.597	1 1 2	2 3 3	4 5 5
74	8.602	8.608	8.614	8.620	8.626	8.631	8.637	8.643	8.649	8.654	1 1 2	2 3 3	4 5 5

75	8.660	8.666	8.672	8.678	8.683	8.689	8.695	8.701	8.706	8.712	1 1 2	2 3 3	4 5 5
76	8.718	8.724	8.729	8.735	8.741	8.746	8.752	8.758	8.764	8.769	1 1 2	2 3 3	4 5 5
77	8.775	8.781	8.786	8.792	8.798	8.803	8.809	8.815	8.820	8.826	1 1 2	2 3 3	4 4 5
78	8.832	8.837	8.843	8.849	8.854	8.860	8.866	8.871	8.877	8.883	1 1 2	2 3 3	4 4 5
79	8.888	8.894	8.899	8.905	8.911	8.916	8.922	8.927	8.933	8.939	1 1 2	2 3 3	4 4 5
80	8.944	8.950	8.955	8.961	8.967	8.972	8.978	8.983	8.989	8.994	1 1 2	2 3 3	4 4 5
81	9.000	9.006	9.011	9.017	9.022	9.028	9.033	9.039	9.044	9.050	1 1 2	2 3 3	4 4 5
82	9.055	9.061	9.066	9.072	9.077	9.083	9.088	9.094	9.099	9.105	1 1 2	2 3 3	4 4 5
83	9.110	9.116	9.121	9.127	9.132	9.138	9.143	9.149	9.154	9.160	1 1 2	2 3 3	4 4 5
84	9.165	9.171	9.176	9.182	9.187	9.192	9.198	9.203	9.209	9.214	1 1 2	2 3 3	4 4 5
85	9.220	9.225	9.230	9.236	9.241	9.247	9.252	9.257	9.263	9.268	1 1 2	2 3 3	4 4 5
86	9.274	9.279	9.284	9.290	9.295	9.301	9.306	9.311	9.317	9.322	1 1 2	2 3 3	4 4 5
87	9.327	9.333	9.338	9.343	9.349	9.354	9.359	9.365	9.370	9.375	1 1 2	2 3 3	4 4 5
88	9.381	9.386	9.391	9.397	9.402	9.407	9.413	9.418	9.423	9.429	1 1 2	2 3 3	4 4 5
89	9.434	9.439	9.445	9.450	9.455	9.460	9.466	9.471	9.476	9.482	1 1 2	2 3 3	4 4 5
90	9.487	9.492	9.497	9.503	9.508	9.513	9.518	9.524	9.529	9.534	1 1 2	2 3 3	4 4 5
91	9.539	9.545	9.550	9.555	9.560	9.566	9.571	9.576	9.581	9.586	1 1 2	2 3 3	4 4 5
92	9.592	9.597	9.602	9.607	9.612	9.618	9.623	9.628	9.633	9.638	1 1 2	2 3 3	4 4 5
93	9.644	9.649	9.654	9.659	9.664	9.670	9.675	9.680	9.685	9.690	1 1 2	2 3 3	4 4 5
94	9.695	9.701	9.706	9.711	9.716	9.721	9.726	9.731	9.737	9.742	1 1 2	2 3 3	4 4 5
95	9.747	9.752	9.757	9.762	9.767	9.772	9.778	9.783	9.788	9.793	1 1 2	2 3 3	4 4 5
96	9.798	9.803	9.808	9.813	9.818	9.823	9.829	9.834	9.839	9.844	1 1 2	2 3 3	4 4 5
97	9.849	9.854	9.859	9.864	9.869	9.874	9.879	9.884	9.889	9.894	1 1 2	2 3 3	4 4 5
98	9.899	9.905	9.910	9.915	9.920	9.925	9.930	9.935	9.940	9.945	0 1 1	2 2 3	3 4 4
99	9.950	9.955	9.960	9.965	9.970	9.975	9.980	9.985	9.990	9.995	0 1 1	2 2 3	3 4 4

[第四表]
 數 / 對 數 表 (一)

數	0	1	2	3	4	5	6	7	8	9	1 2 3	4 5 6	7 8 9
1.0	.0000	.0043	.0086	.0128	.0170	.0212	.0253	.0294	.0334	.0374	4 8 12	17 21 25	29 33 37
1.1	.0414	.0453	.0492	.0531	.0569	.0607	.0645	.0682	.0719	.0755	4 8 11	15 19 23	26 30 34
1.2	.0792	.0828	.0864	.0899	.0934	.0969	.1004	.1038	.1072	.1106	3 7 10	14 17 21	24 28 31
1.3	.1139	.1173	.1206	.1239	.1271	.1303	.1335	.1367	.1399	.1430	3 6 10	13 16 19	23 26 29
1.4	.1461	.1492	.1523	.1553	.1584	.1614	.1644	.1673	.1703	.1732	3 6 9	12 15 18	21 24 27
1.5	.1761	.1790	.1818	.1847	.1875	.1903	.1931	.1959	.1987	.2014	3 6 8	11 14 17	20 22 25
1.6	.2041	.2068	.2095	.2122	.2148	.2175	.2201	.2227	.2253	.2279	3 5 8	11 13 16	18 21 24
1.7	.2304	.2330	.2355	.2380	.2405	.2430	.2455	.2480	.2504	.2529	2 5 7	10 12 15	17 20 22
1.8	.2553	.2577	.2601	.2625	.2648	.2672	.2695	.2718	.2742	.2765	2 5 7	9 12 14	16 19 21
1.9	.2788	.2810	.2833	.2856	.2878	.2900	.2923	.2945	.2967	.2989	2 4 7	9 11 13	16 18 20
2.0	.3010	.3032	.3054	.3075	.3096	.3118	.3139	.3160	.3181	.3201	2 4 6	8 11 13	15 17 19
2.1	.3222	.3243	.3263	.3284	.3304	.3324	.3345	.3365	.3385	.3404	2 4 6	8 10 12	14 16 18
2.2	.3424	.3444	.3464	.3483	.3502	.3522	.3541	.3560	.3579	.3598	2 4 6	8 10 12	14 15 17
2.3	.3617	.3636	.3655	.3674	.3692	.3711	.3729	.3747	.3766	.3784	2 4 6	7 9 11	13 15 17
2.4	.3802	.3820	.3838	.3856	.3874	.3892	.3909	.3927	.3945	.3962	2 4 5	7 9 11	12 14 16
2.5	.3979	.3997	.4014	.4031	.4048	.4065	.4082	.4099	.4116	.4133	2 3 5	7 9 10	12 14 15
2.6	.4150	.4166	.4183	.4200	.4216	.4232	.4249	.4265	.4281	.4298	2 3 5	7 8 10	11 13 15
2.7	.4314	.4330	.4346	.4362	.4378	.4393	.4409	.4425	.4440	.4456	2 3 5	6 8 9	11 13 14
2.8	.4472	.4487	.4502	.4518	.4533	.4548	.4564	.4579	.4594	.4609	2 3 5	6 8 9	11 12 14
2.9	.4624	.4639	.4654	.4669	.4683	.4698	.4713	.4728	.4742	.4757	1 3 4	6 7 9	10 12 13

3.0	.4771	.4786	.4800	.4814	.4829	.4843	.4857	.4871	.4886	.4900	1 3 4	6 7 9	10 11 13
3.1	.4914	.4928	.4942	.4955	.4969	.4983	.4997	.5011	.5024	.5038	1 3 4	6 7 8	10 11 12
3.2	.5051	.5065	.5079	.5092	.5105	.5119	.5132	.5145	.5159	.5172	1 3 4	5 7 8	9 11 12
3.3	.5185	.5198	.5211	.5224	.5237	.5250	.5263	.5276	.5289	.5302	1 3 4	5 6 8	9 10 12
3.4	.5315	.5328	.5340	.5353	.5366	.5378	.5391	.5403	.5416	.5428	1 3 4	5 6 8	9 10 11
3.5	.5441	.5453	.5465	.5478	.5490	.5502	.5514	.5527	.5539	.5551	1 2 4	5 6 7	9 10 11
3.6	.5563	.5575	.5587	.5599	.5611	.5623	.5635	.5647	.5658	.5670	1 2 4	5 6 7	8 10 11
3.7	.5682	.5694	.5705	.5717	.5729	.5740	.5752	.5763	.5775	.5786	1 2 3	5 6 7	8 9 10
3.8	.5798	.5809	.5821	.5832	.5843	.5855	.5866	.5877	.5888	.5899	1 2 3	5 6 7	8 9 10
3.9	.5911	.5922	.5933	.5944	.5955	.5966	.5977	.5988	.5999	.6010	1 2 3	4 5 7	8 9 10
4.0	.6021	.6031	.6042	.6053	.6064	.6075	.6085	.6096	.6107	.6117	1 2 3	4 5 7	8 9 10
4.1	.6128	.6138	.6149	.6160	.6170	.6180	.6191	.6201	.6212	.6222	1 2 3	4 5 6	7 8 9
4.2	.6232	.6243	.6253	.6263	.6274	.6284	.6294	.6304	.6314	.6325	1 2 3	4 5 6	7 8 9
4.3	.6335	.6345	.6355	.6365	.6375	.6385	.6395	.6405	.6415	.6425	1 2 3	4 5 6	7 8 9
4.4	.6435	.6444	.6454	.6464	.6474	.6484	.6493	.6503	.6513	.6522	1 2 3	4 5 6	7 8 9
4.5	.6532	.6542	.6551	.6561	.6571	.6580	.6590	.6599	.6609	.6618	1 2 3	4 5 6	7 8 9
4.6	.6628	.6637	.6646	.6656	.6665	.6675	.6684	.6693	.6702	.6712	1 2 3	4 5 6	7 7 8
4.7	.6721	.6730	.6739	.6749	.6758	.6767	.6776	.6785	.6794	.6803	1 2 3	4 5 5	6 7 8
4.8	.6812	.6821	.6830	.6839	.6848	.6857	.6866	.6875	.6884	.6893	1 2 3	4 4 5	6 7 8
4.9	.6902	.6911	.6920	.6928	.6937	.6946	.6955	.6964	.6972	.6981	1 2 3	4 4 5	6 7 8
5.0	.6990	.6998	.7007	.7016	.7024	.7033	.7042	.7050	.7059	.7067	1 2 3	3 4 5	6 7 8
5.1	.7076	.7084	.7093	.7101	.7110	.7118	.7126	.7135	.7143	.7152	1 2 3	3 4 5	6 7 8
5.2	.7160	.7168	.7177	.7185	.7193	.7202	.7210	.7218	.7226	.7235	1 2 2	3 4 5	6 7 7
5.3	.7243	.7251	.7259	.7267	.7275	.7284	.7292	.7300	.7308	.7316	1 2 2	3 4 5	6 6 7
5.4	.7324	.7332	.7340	.7348	.7356	.7364	.7372	.7380	.7388	.7396	1 2 2	3 4 5	6 6 7

[第 四 對 數 表 (二)]

數	0	1	2	3	4	5	6	7	8	9	1 2 3	4 5 6	7 8 9
5.5	.7404	.7412	.7419	.7427	.7435	.7443	.7451	.7459	.7466	.7474	1 2 2	3 4 5	5 6 7
5.6	.7482	.7490	.7497	.7505	.7513	.7520	.7528	.7536	.7543	.7551	1 2 2	3 4 5	5 6 7
5.7	.7559	.7566	.7574	.7582	.7589	.7597	.7604	.7612	.7619	.7627	1 2 2	3 4 4	5 6 7
5.8	.7634	.7642	.7649	.7657	.7664	.7672	.7679	.7686	.7694	.7701	1 1 2	3 4 4	5 6 7
5.9	.7709	.7716	.7723	.7731	.7738	.7745	.7752	.7760	.7767	.7774	1 1 2	3 4 4	5 6 7
6.0	.7782	.7789	.7796	.7803	.7810	.7818	.7825	.7832	.7839	.7846	1 1 2	3 4 4	5 6 6
6.1	.7853	.7860	.7868	.7875	.7882	.7889	.7896	.7903	.7910	.7917	1 1 2	3 4 4	5 6 6
6.2	.7924	.7931	.7938	.7945	.7952	.7959	.7966	.7973	.7980	.7987	1 1 2	3 3 4	5 6 6
6.3	.7993	.8000	.8007	.8014	.8021	.8028	.8035	.8041	.8048	.8055	1 1 2	3 3 4	5 5 6
6.4	.8062	.8069	.8075	.8082	.8089	.8096	.8102	.8109	.8116	.8122	1 1 2	3 3 4	5 5 6
6.5	.8129	.8136	.8142	.8149	.8156	.8162	.8169	.8176	.8182	.8189	1 1 2	3 3 4	5 5 6
6.6	.8195	.8202	.8209	.8215	.8222	.8228	.8235	.8241	.8248	.8254	1 1 2	3 3 4	5 5 6
6.7	.8261	.8267	.8274	.8280	.8287	.8293	.8299	.8306	.8312	.8319	1 1 2	3 3 4	5 5 6
6.8	.8325	.8331	.8338	.8344	.8351	.8357	.8363	.8370	.8376	.8382	1 1 2	3 3 4	4 5 6
6.9	.8388	.8395	.8401	.8407	.8414	.8420	.8426	.8432	.8439	.8445	1 1 2	2 3 4	4 5 6
7.0	.8451	.8457	.8463	.8470	.8476	.8482	.8488	.8494	.8500	.8506	1 1 2	2 3 4	4 5 6
7.1	.8513	.8519	.8525	.8531	.8537	.8543	.8549	.8555	.8561	.8567	1 1 2	2 3 4	4 5 5
7.2	.8573	.8579	.8585	.8591	.8597	.8603	.8609	.8615	.8621	.8627	1 1 2	2 3 4	4 5 5
7.3	.8633	.8639	.8645	.8651	.8657	.8663	.8669	.8675	.8681	.8686	1 1 2	2 3 4	4 5 5
7.4	.8692	.8698	.8704	.8710	.8716	.8722	.8727	.8733	.8739	.8745	1 1 2	2 3 4	4 5 5

7.5	.8751	.8756	.8762	.8768	.8774	.8779	.8785	.8791	.8797	.8802	1 1 2	2 3 3	4 5 5
7.6	.8808	.8814	.8820	.8825	.8831	.8837	.8842	.8848	.8854	.8859	1 1 2	2 3 3	4 5 5
7.7	.8865	.8871	.8876	.8882	.8887	.8893	.8899	.8904	.8910	.8915	1 1 2	2 3 3	4 4 5
7.8	.8921	.8927	.8932	.8938	.8943	.8949	.8954	.8960	.8965	.8971	1 1 2	2 3 3	4 4 5
7.9	.8976	.8982	.8987	.8993	.8998	.9004	.9009	.9015	.9020	.9025	1 1 2	2 3 3	4 4 5
8.0	.9031	.9036	.9042	.9047	.9053	.9058	.9063	.9069	.9074	.9079	1 1 2	2 3 3	4 4 5
8.1	.9085	.9090	.9096	.9101	.9106	.9112	.9117	.9122	.9128	.9133	1 1 2	2 3 3	4 4 5
8.2	.9138	.9143	.9149	.9154	.9159	.9165	.9170	.9175	.9180	.9186	1 1 2	2 3 3	4 4 5
8.3	.9191	.9196	.9201	.9206	.9212	.9217	.9222	.9227	.9232	.9238	1 1 2	2 3 3	4 4 5
8.4	.9243	.9248	.9253	.9258	.9263	.9269	.9274	.9279	.9284	.9289	1 1 2	2 3 3	4 4 5
8.5	.9294	.9299	.9304	.9309	.9315	.9320	.9325	.9330	.9335	.9340	1 1 2	2 3 3	4 4 5
8.6	.9345	.9350	.9355	.9360	.9365	.9370	.9375	.9380	.9385	.9390	1 1 2	2 3 3	4 4 5
8.7	.9395	.9400	.9405	.9410	.9415	.9420	.9425	.9430	.9435	.9440	0 1 1	2 2 3	3 4 4
8.8	.9445	.9450	.9455	.9460	.9465	.9469	.9474	.9479	.9484	.9489	0 1 1	2 2 3	3 4 4
8.9	.9494	.9499	.9504	.9509	.9513	.9518	.9523	.9528	.9533	.9538	0 1 1	2 2 3	3 4 4
9.0	.9542	.9547	.9552	.9557	.9562	.9566	.9571	.9576	.9581	.9586	0 1 1	2 2 3	3 4 4
9.1	.9590	.9595	.9600	.9605	.9609	.9614	.9619	.9624	.9628	.9633	0 1 1	2 2 3	3 4 4
9.2	.9638	.9643	.9647	.9652	.9657	.9661	.9666	.9671	.9675	.9680	0 1 1	2 2 3	3 4 4
9.3	.9685	.9689	.9694	.9699	.9703	.9708	.9713	.9717	.9722	.9727	0 1 1	2 2 3	3 4 4
9.4	.9731	.9736	.9741	.9745	.9750	.9754	.9759	.9763	.9768	.9773	0 1 1	2 2 3	3 4 4
9.5	.9777	.9782	.9786	.9791	.9795	.9800	.9805	.9809	.9814	.9818	0 1 1	2 2 3	3 4 4
9.6	.9823	.9827	.9832	.9836	.9841	.9845	.9850	.9854	.9859	.9863	0 1 1	2 2 3	3 4 4
9.7	.9868	.9872	.9877	.9881	.9886	.9890	.9894	.9899	.9903	.9908	0 1 1	2 2 3	3 4 4
9.8	.9912	.9917	.9921	.9926	.9930	.9934	.9939	.9943	.9948	.9952	0 1 1	2 2 3	3 4 4
9.9	.9956	.9961	.9965	.9969	.9974	.9978	.9983	.9987	.9991	.9996	0 1 1	2 2 3	3 3 4

[第五表] 正 弦 表 (一)

分 度	20										十				
	0	6	12	18	24	30	36	42	48	54	1	2	3	4	5
0	0.0000	0.0017	0.0035	0.0052	0.0070	0.0087	0.0105	0.0122	0.0140	0.0157	3	6	9	12	15
1	0.0175	0.0192	0.0209	0.0227	0.0244	0.0262	0.0279	0.0297	0.0314	0.0332	3	6	9	12	15
2	0.0349	0.0366	0.0384	0.0401	0.0419	0.0436	0.0454	0.0471	0.0488	0.0506	3	6	9	12	15
3	0.0523	0.0541	0.0558	0.0576	0.0593	0.0610	0.0628	0.0645	0.0663	0.0680	3	6	9	12	15
4	0.0698	0.0715	0.0732	0.0750	0.0767	0.0785	0.0802	0.0819	0.0837	0.0854	3	6	9	12	14
5	0.0872	0.0889	0.0906	0.0924	0.0941	0.0958	0.0976	0.0993	0.1011	0.1028	3	6	9	12	14
6	0.1045	0.1063	0.1080	0.1097	0.1115	0.1132	0.1149	0.1167	0.1184	0.1201	3	6	9	12	14
7	0.1219	0.1236	0.1253	0.1271	0.1288	0.1305	0.1323	0.1340	0.1357	0.1374	3	6	9	12	14
8	0.1392	0.1409	0.1426	0.1444	0.1461	0.1478	0.1495	0.1513	0.1530	0.1547	3	6	9	12	14
9	0.1564	0.1582	0.1599	0.1616	0.1633	0.1650	0.1668	0.1685	0.1702	0.1719	3	6	9	12	14
10	0.1736	0.1754	0.1771	0.1788	0.1805	0.1822	0.1840	0.1857	0.1874	0.1891	3	6	9	11	14
11	0.1908	0.1925	0.1942	0.1959	0.1977	0.1994	0.2011	0.2028	0.2045	0.2062	3	6	9	11	14
12	0.2079	0.2096	0.2113	0.2130	0.2147	0.2164	0.2181	0.2198	0.2215	0.2233	3	6	9	11	14
13	0.2250	0.2267	0.2284	0.2300	0.2317	0.2334	0.2351	0.2368	0.2385	0.2402	3	6	8	11	14
14	0.2419	0.2436	0.2453	0.2470	0.2487	0.2504	0.2521	0.2538	0.2554	0.2571	3	6	8	11	14
15	0.2588	0.2605	0.2622	0.2639	0.2656	0.2672	0.2689	0.2706	0.2723	0.2740	3	6	8	11	14
16	0.2756	0.2773	0.2790	0.2807	0.2823	0.2840	0.2857	0.2874	0.2890	0.2907	3	6	8	11	14
17	0.2924	0.2940	0.2957	0.2974	0.2990	0.3007	0.3024	0.3040	0.3057	0.3074	3	6	8	11	14
18	0.3090	0.3107	0.3123	0.3140	0.3156	0.3173	0.3190	0.3206	0.3223	0.3239	3	6	8	11	14
19	0.3256	0.3272	0.3289	0.3305	0.3322	0.3338	0.3355	0.3371	0.3387	0.3404	3	5	8	11	14

20	0.3420	0.3437	0.3453	0.3469	0.3486	0.3502	0.3518	0.3535	0.3551	0.3567	3	5	8	11	14
21	0.3584	0.3600	0.3616	0.3633	0.3649	0.3665	0.3681	0.3697	0.3714	0.3730	3	5	8	11	14
22	0.3746	0.3762	0.3778	0.3795	0.3811	0.3827	0.3843	0.3859	0.3875	0.3891	3	5	8	11	14
23	0.3907	0.3923	0.3939	0.3955	0.3971	0.3987	0.4003	0.4019	0.4035	0.4051	3	5	8	11	14
24	0.4067	0.4083	0.4099	0.4115	0.4131	0.4147	0.4163	0.4179	0.4195	0.4210	3	5	8	11	13
25	0.4226	0.4242	0.4258	0.4274	0.4289	0.4305	0.4321	0.4337	0.4352	0.4368	3	5	8	11	13
26	0.4384	0.4399	0.4415	0.4431	0.4446	0.4462	0.4478	0.4493	0.4509	0.4524	3	5	8	10	13
27	0.4540	0.4555	0.4571	0.4586	0.4602	0.4617	0.4633	0.4648	0.4664	0.4679	3	5	8	10	13
28	0.4695	0.4710	0.4726	0.4741	0.4756	0.4772	0.4787	0.4802	0.4818	0.4833	3	5	8	10	13
29	0.4848	0.4863	0.4879	0.4894	0.4909	0.4924	0.4939	0.4955	0.4970	0.4985	3	5	8	10	13
30	0.5000	0.5015	0.5030	0.5045	0.5060	0.5075	0.5090	0.5105	0.5120	0.5135	3	5	8	10	13
31	0.5150	0.5165	0.5180	0.5195	0.5210	0.5225	0.5240	0.5255	0.5270	0.5284	2	5	7	10	12
32	0.5299	0.5314	0.5329	0.5344	0.5358	0.5373	0.5388	0.5402	0.5417	0.5432	2	5	7	10	12
33	0.5446	0.5461	0.5476	0.5490	0.5505	0.5519	0.5534	0.5548	0.5563	0.5577	2	5	7	10	12
34	0.5592	0.5606	0.5621	0.5635	0.5650	0.5664	0.5678	0.5693	0.5707	0.5721	2	5	7	10	12
35	0.5736	0.5750	0.5764	0.5779	0.5793	0.5807	0.5821	0.5835	0.5850	0.5864	2	5	7	9	12
36	0.5878	0.5892	0.5906	0.5920	0.5934	0.5948	0.5962	0.5976	0.5990	0.6004	2	5	7	9	12
37	0.6018	0.6032	0.6046	0.6060	0.6074	0.6088	0.6101	0.6115	0.6129	0.6143	2	5	7	9	12
38	0.6157	0.6170	0.6184	0.6198	0.6211	0.6225	0.6239	0.6252	0.6266	0.6280	2	5	7	9	11
39	0.6293	0.6307	0.6320	0.6334	0.6347	0.6361	0.6374	0.6388	0.6401	0.6414	2	4	7	9	11
40	0.6428	0.6441	0.6455	0.6468	0.6481	0.6494	0.6508	0.6521	0.6534	0.6547	2	4	7	9	11
41	0.6561	0.6574	0.6587	0.6600	0.6613	0.6626	0.6639	0.6652	0.6665	0.6678	2	4	7	9	11
42	0.6691	0.6704	0.6717	0.6730	0.6743	0.6756	0.6769	0.6782	0.6794	0.6807	2	4	6	9	11
43	0.6820	0.6833	0.6845	0.6858	0.6871	0.6884	0.6896	0.6909	0.6921	0.6934	2	4	6	8	11
44	0.6947	0.6959	0.6972	0.6984	0.6997	0.7009	0.7022	0.7034	0.7046	0.7059	2	4	6	8	10

〔第五表〕 正 弦 表 (二)

分 度	差														
	0	6	12	18	24	30	36	42	48	54	1 1	2 2	3 3	4 4	5 5
45	0.7071	0.7083	0.7096	0.7108	0.7120	0.7133	0.7145	0.7157	0.7169	0.7181	2	4	6	8	10
46	0.7193	0.7206	0.7218	0.7230	0.7242	0.7254	0.7266	0.7278	0.7290	0.7302	2	4	6	8	10
47	0.7314	0.7325	0.7337	0.7349	0.7361	0.7373	0.7385	0.7396	0.7408	0.7420	2	4	6	8	10
48	0.7431	0.7443	0.7455	0.7466	0.7478	0.7490	0.7501	0.7513	0.7524	0.7536	2	4	6	8	10
49	0.7547	0.7559	0.7570	0.7581	0.7593	0.7604	0.7615	0.7627	0.7638	0.7649	2	4	6	8	9
50	0.7660	0.7672	0.7683	0.7694	0.7705	0.7716	0.7727	0.7738	0.7749	0.7760	2	4	6	7	9
51	0.7771	0.7782	0.7793	0.7804	0.7815	0.7826	0.7837	0.7848	0.7859	0.7869	2	4	5	7	9
52	0.7880	0.7891	0.7902	0.7912	0.7923	0.7934	0.7944	0.7955	0.7965	0.7976	2	4	5	7	9
53	0.7986	0.7997	0.8007	0.8018	0.8028	0.8039	0.8049	0.8059	0.8070	0.8080	2	3	5	7	9
54	0.8090	0.8100	0.8111	0.8121	0.8131	0.8141	0.8151	0.8161	0.8171	0.8181	2	3	5	7	8
55	0.8192	0.8202	0.8211	0.8221	0.8231	0.8241	0.8251	0.8261	0.8271	0.8281	2	3	5	7	8
56	0.8290	0.8300	0.8310	0.8320	0.8329	0.8339	0.8348	0.8358	0.8368	0.8377	2	3	5	6	8
57	0.8387	0.8396	0.8406	0.8415	0.8425	0.8434	0.8443	0.8453	0.8462	0.8471	2	3	5	6	8
58	0.8480	0.8490	0.8499	0.8508	0.8517	0.8526	0.8536	0.8545	0.8554	0.8563	2	3	5	6	8
59	0.8572	0.8581	0.8590	0.8599	0.8607	0.8616	0.8625	0.8634	0.8643	0.8652	1	3	4	6	7
60	0.8660	0.8669	0.8678	0.8686	0.8695	0.8704	0.8712	0.8721	0.8729	0.8738	1	3	4	6	7
61	0.8746	0.8755	0.8763	0.8771	0.8780	0.8788	0.8796	0.8805	0.8813	0.8821	1	3	4	6	7
62	0.8829	0.8838	0.8846	0.8854	0.8862	0.8870	0.8878	0.8886	0.8894	0.8902	1	3	4	5	7
63	0.8910	0.8918	0.8926	0.8934	0.8942	0.8949	0.8957	0.8965	0.8973	0.8980	1	3	4	5	6
64	0.8988	0.8996	0.9003	0.9011	0.9018	0.9026	0.9033	0.9041	0.9048	0.9056	1	3	4	5	6

65	0.9063	0.9070	0.9078	0.9085	0.9092	0.9100	0.9107	0.9114	0.9121	0.9128	1	2	4	5	6
66	0.9135	0.9143	0.9150	0.9157	0.9164	0.9171	0.9178	0.9184	0.9191	0.9198	1	2	3	5	6
67	0.9205	0.9212	0.9219	0.9225	0.9232	0.9239	0.9245	0.9252	0.9259	0.9265	1	2	3	4	6
68	0.9272	0.9278	0.9285	0.9291	0.9298	0.9304	0.9311	0.9317	0.9323	0.9330	1	2	3	4	5
69	0.9336	0.9342	0.9348	0.9354	0.9361	0.9367	0.9373	0.9379	0.9385	0.9391	1	2	3	4	5
70	0.9397	0.9403	0.9409	0.9415	0.9421	0.9426	0.9432	0.9438	0.9444	0.9449	1	2	3	4	5
71	0.9455	0.9461	0.9466	0.9472	0.9478	0.9483	0.9489	0.9494	0.9500	0.9505	1	2	3	4	5
72	0.9511	0.9516	0.9521	0.9527	0.9532	0.9537	0.9542	0.9548	0.9553	0.9558	1	2	3	4	4
73	0.9563	0.9568	0.9573	0.9578	0.9583	0.9588	0.9593	0.9598	0.9603	0.9608	1	2	2	3	4
74	0.9613	0.9617	0.9622	0.9627	0.9632	0.9636	0.9641	0.9646	0.9650	0.9655	1	2	2	3	4
75	0.9659	0.9664	0.9668	0.9673	0.9677	0.9681	0.9686	0.9690	0.9694	0.9699	1	1	2	3	4
76	0.9703	0.9707	0.9711	0.9715	0.9720	0.9724	0.9728	0.9732	0.9736	0.9740	1	1	2	3	3
77	0.9744	0.9748	0.9751	0.9755	0.9759	0.9763	0.9767	0.9770	0.9774	0.9778	1	1	2	3	3
78	0.9781	0.9785	0.9789	0.9792	0.9796	0.9799	0.9803	0.9806	0.9810	0.9813	1	1	2	2	3
79	0.9816	0.9820	0.9823	0.9826	0.9829	0.9833	0.9836	0.9839	0.9842	0.9845	1	1	2	2	3
80	0.9848	0.9851	0.9854	0.9857	0.9860	0.9863	0.9866	0.9869	0.9871	0.9874	0	1	1	2	2
81	0.9877	0.9880	0.9882	0.9885	0.9888	0.9890	0.9893	0.9895	0.9898	0.9900	0	1	1	2	2
82	0.9903	0.9905	0.9907	0.9910	0.9912	0.9914	0.9917	0.9919	0.9921	0.9923	0	1	1	2	2
83	0.9925	0.9928	0.9930	0.9932	0.9934	0.9936	0.9938	0.9940	0.9942	0.9943	0	1	1	1	2
84	0.9945	0.9947	0.9949	0.9951	0.9952	0.9954	0.9956	0.9957	0.9959	0.9960	0	1	1	1	1
85	0.9962	0.9963	0.9965	0.9966	0.9968	0.9969	0.9971	0.9972	0.9973	0.9974	0	0	1	1	1
86	0.9976	0.9977	0.9978	0.9979	0.9980	0.9981	0.9982	0.9983	0.9984	0.9985	0	0	1	1	1
87	0.9986	0.9987	0.9988	0.9989	0.9990	0.9990	0.9991	0.9992	0.9993	0.9993	0	0	0	1	1
88	0.9994	0.9995	0.9995	0.9996	0.9996	0.9997	0.9997	0.9997	0.9998	0.9998	0	0	0	0	0
89	0.9998	0.9999	0.9999	0.9999	0.9999	1.0000	1.0000	1.0000	1.0000	1.0000	0	0	0	0	0

[第六表] 餘弦表 (一)

分 度	餘弦										差				
	0	6	12	18	24	30	36	42	48	54	1	2	3	4	5
0	1.0000	1.0000	1.0000	1.0000	1.0000	1.0000	0.9999	0.9999	0.9999	0.9999	0	0	0	0	0
1	0.9998	0.9998	0.9998	0.9997	0.9997	0.9997	0.9996	0.9996	0.9996	0.9995	0	0	0	0	0
2	0.9994	0.9993	0.9993	0.9992	0.9991	0.9990	0.9989	0.9989	0.9988	0.9987	0	0	0	0	1
3	0.9986	0.9985	0.9984	0.9983	0.9982	0.9981	0.9980	0.9979	0.9978	0.9977	0	0	1	1	1
4	0.9976	0.9974	0.9973	0.9972	0.9971	0.9969	0.9968	0.9966	0.9965	0.9963	0	0	1	1	1
5	0.9962	0.9960	0.9959	0.9957	0.9956	0.9954	0.9952	0.9951	0.9949	0.9947	0	1	1	1	1
6	0.9945	0.9943	0.9942	0.9940	0.9938	0.9936	0.9934	0.9932	0.9930	0.9928	0	1	1	1	2
7	0.9925	0.9923	0.9921	0.9919	0.9917	0.9914	0.9912	0.9910	0.9907	0.9905	0	1	1	2	2
8	0.9903	0.9900	0.9898	0.9895	0.9893	0.9890	0.9888	0.9885	0.9882	0.9880	0	1	1	2	2
9	0.9877	0.9874	0.9871	0.9869	0.9866	0.9863	0.9860	0.9857	0.9854	0.9851	0	1	1	2	2
10	0.9848	0.9845	0.9842	0.9839	0.9836	0.9833	0.9829	0.9826	0.9823	0.9820	1	1	2	2	3
11	0.9816	0.9813	0.9810	0.9806	0.9803	0.9799	0.9796	0.9792	0.9789	0.9785	1	1	2	2	3
12	0.9781	0.9778	0.9774	0.9770	0.9767	0.9763	0.9759	0.9755	0.9751	0.9748	1	1	2	3	3
13	0.9744	0.9740	0.9736	0.9732	0.9728	0.9724	0.9720	0.9715	0.9711	0.9707	1	1	2	3	3
14	0.9703	0.9699	0.9694	0.9690	0.9686	0.9681	0.9677	0.9673	0.9668	0.9664	1	1	2	3	4
15	0.9659	0.9655	0.9650	0.9646	0.9641	0.9636	0.9632	0.9627	0.9622	0.9617	1	2	2	3	4
16	0.9613	0.9608	0.9603	0.9598	0.9593	0.9588	0.9583	0.9578	0.9573	0.9568	1	2	2	3	4
17	0.9563	0.9558	0.9553	0.9548	0.9542	0.9537	0.9532	0.9527	0.9521	0.9516	1	2	3	4	4
18	0.9511	0.9505	0.9500	0.9494	0.9489	0.9483	0.9478	0.9472	0.9466	0.9461	1	2	3	4	5
19	0.9455	0.9449	0.9444	0.9438	0.9432	0.9426	0.9421	0.9415	0.9409	0.9403	1	2	3	4	5

20	0.9397	0.9391	0.9385	0.9379	0.9373	0.9367	0.9361	0.9354	0.9348	0.9342	1	2	3	4	5
21	0.9336	0.9330	0.9323	0.9317	0.9311	0.9304	0.9298	0.9291	0.9285	0.9278	1	2	3	4	5
22	0.9272	0.9265	0.9259	0.9252	0.9245	0.9239	0.9232	0.9225	0.9219	0.9212	1	2	3	4	6
23	0.9205	0.9198	0.9191	0.9184	0.9178	0.9171	0.9164	0.9157	0.9150	0.9143	1	2	3	4	6
24	0.9135	0.9128	0.9121	0.9114	0.9107	0.9100	0.9092	0.9085	0.9078	0.9070	1	2	3	4	6
25	0.9063	0.9056	0.9048	0.9041	0.9033	0.9026	0.9018	0.9011	0.9003	0.8996	1	3	4	5	6
26	0.8988	0.8980	0.8973	0.8965	0.8957	0.8949	0.8942	0.8934	0.8926	0.8918	1	3	4	5	6
27	0.8910	0.8902	0.8894	0.8886	0.8878	0.8870	0.8862	0.8854	0.8846	0.8838	1	3	4	5	7
28	0.8829	0.8821	0.8813	0.8805	0.8796	0.8788	0.8780	0.8771	0.8763	0.8755	1	3	4	6	7
29	0.8746	0.8738	0.8729	0.8721	0.8712	0.8704	0.8695	0.8686	0.8678	0.8669	1	3	4	6	7
30	0.8660	0.8652	0.8643	0.8634	0.8625	0.8616	0.8607	0.8599	0.8590	0.8581	1	3	4	6	7
31	0.8572	0.8563	0.8554	0.8545	0.8536	0.8526	0.8517	0.8508	0.8499	0.8490	2	3	5	6	8
32	0.8480	0.8471	0.8462	0.8453	0.8443	0.8434	0.8425	0.8415	0.8406	0.8396	2	3	5	6	8
33	0.8387	0.8377	0.8368	0.8358	0.8348	0.8339	0.8329	0.8320	0.8310	0.8300	2	3	5	6	8
34	0.8290	0.8281	0.8271	0.8261	0.8251	0.8241	0.8231	0.8221	0.8211	0.8202	2	3	5	6	8
35	0.8192	0.8181	0.8171	0.8161	0.8151	0.8141	0.8131	0.8121	0.8111	0.8100	2	3	5	7	8
36	0.8090	0.8080	0.8070	0.8059	0.8049	0.8039	0.8028	0.8018	0.8007	0.7997	2	3	5	7	9
37	0.7986	0.7976	0.7965	0.7955	0.7944	0.7934	0.7923	0.7912	0.7902	0.7891	2	4	5	7	9
38	0.7880	0.7869	0.7859	0.7848	0.7837	0.7826	0.7815	0.7804	0.7793	0.7782	2	4	5	7	9
39	0.7771	0.7760	0.7749	0.7738	0.7727	0.7716	0.7705	0.7694	0.7683	0.7672	2	4	6	7	9
40	0.7660	0.7649	0.7638	0.7627	0.7615	0.7604	0.7593	0.7581	0.7570	0.7559	2	4	6	8	9
41	0.7547	0.7536	0.7524	0.7513	0.7501	0.7490	0.7478	0.7466	0.7455	0.7443	2	4	6	8	10
42	0.7431	0.7420	0.7408	0.7396	0.7385	0.7373	0.7361	0.7349	0.7337	0.7325	2	4	6	8	10
43	0.7314	0.7302	0.7290	0.7278	0.7266	0.7254	0.7242	0.7230	0.7218	0.7206	2	4	6	8	10
44	0.7193	0.7181	0.7169	0.7157	0.7145	0.7133	0.7120	0.7108	0.7096	0.7083	2	4	6	8	10

[第 六 表] 餘 放 / 表 (二)

分 度	差														
	0	6	12	18	24	30	36	42	48	54					
45	0.7071	0.7059	0.7046	0.7034	0.7022	0.7009	0.6997	0.6984	0.6972	0.6959	2	4	6	8	10
46	0.6947	0.6934	0.6921	0.6909	0.6896	0.6884	0.6871	0.6858	0.6845	0.6833	2	4	6	8	11
47	0.6820	0.6807	0.6794	0.6782	0.6769	0.6756	0.6743	0.6730	0.6717	0.6704	2	4	6	9	11
48	0.6691	0.6678	0.6665	0.6652	0.6639	0.6626	0.6613	0.6600	0.6587	0.6574	2	4	7	9	11
49	0.6561	0.6547	0.6534	0.6521	0.6508	0.6494	0.6481	0.6468	0.6455	0.6441	2	4	7	9	11
50	0.6428	0.6414	0.6401	0.6388	0.6374	0.6361	0.6347	0.6334	0.6320	0.6307	2	4	7	9	11
51	0.6293	0.6280	0.6266	0.6252	0.6239	0.6225	0.6211	0.6198	0.6184	0.6170	2	5	7	9	11
52	0.6157	0.6143	0.6129	0.6115	0.6101	0.6088	0.6074	0.6060	0.6046	0.6032	2	5	7	9	12
53	0.6018	0.6004	0.5990	0.5976	0.5962	0.5948	0.5934	0.5920	0.5906	0.5892	2	5	7	9	12
54	0.5878	0.5864	0.5850	0.5835	0.5821	0.5807	0.5793	0.5779	0.5764	0.5750	2	5	7	9	12
55	0.5736	0.5721	0.5707	0.5693	0.5678	0.5664	0.5650	0.5635	0.5621	0.5606	2	5	7	10	12
56	0.5592	0.5577	0.5563	0.5548	0.5534	0.5519	0.5505	0.5490	0.5476	0.5461	2	5	7	10	12
57	0.5446	0.5432	0.5417	0.5402	0.5388	0.5373	0.5358	0.5344	0.5329	0.5314	2	5	7	10	12
58	0.5299	0.5284	0.5270	0.5255	0.5240	0.5225	0.5210	0.5195	0.5180	0.5165	2	5	7	10	12
59	0.5150	0.5135	0.5120	0.5105	0.5090	0.5075	0.5060	0.5045	0.5030	0.5015	3	5	8	10	13
60	0.5000	0.4985	0.4970	0.4955	0.4939	0.4924	0.4909	0.4894	0.4879	0.4863	3	5	8	10	13
61	0.4848	0.4833	0.4818	0.4802	0.4787	0.4772	0.4756	0.4741	0.4726	0.4710	3	5	8	10	13
62	0.4695	0.4679	0.4664	0.4648	0.4633	0.4617	0.4602	0.4586	0.4571	0.4555	3	5	8	10	13
63	0.4540	0.4524	0.4509	0.4493	0.4478	0.4462	0.4446	0.4431	0.4415	0.4399	3	5	8	10	13
64	0.4384	0.4368	0.4352	0.4337	0.4321	0.4305	0.4289	0.4274	0.4258	0.4242	3	5	8	11	13

65	0.4226	0.4210	0.4195	0.4179	0.4163	0.4147	0.4131	0.4115	0.4099	0.4083	3	5	8	11	13
66	0.4067	0.4051	0.4035	0.4019	0.4003	0.3987	0.3971	0.3955	0.3939	0.3923	3	5	8	11	13
67	0.3907	0.3891	0.3875	0.3859	0.3843	0.3827	0.3811	0.3795	0.3778	0.3762	3	5	8	11	13
68	0.3746	0.3730	0.3714	0.3697	0.3681	0.3665	0.3649	0.3633	0.3616	0.3600	3	5	8	11	14
69	0.3584	0.3567	0.3551	0.3535	0.3518	0.3502	0.3486	0.3469	0.3453	0.3437	3	5	8	11	14
70	0.3420	0.3404	0.3387	0.3371	0.3355	0.3338	0.3322	0.3305	0.3289	0.3272	3	5	8	11	14
71	0.3256	0.3239	0.3223	0.3206	0.3190	0.3173	0.3156	0.3140	0.3123	0.3107	3	6	8	11	14
72	0.3090	0.3074	0.3057	0.3040	0.3024	0.3007	0.2990	0.2974	0.2957	0.2940	3	6	8	11	14
73	0.2924	0.2907	0.2890	0.2874	0.2857	0.2840	0.2823	0.2807	0.2790	0.2773	3	6	8	11	14
74	0.2756	0.2740	0.2723	0.2706	0.2689	0.2672	0.2656	0.2639	0.2622	0.2605	3	6	8	11	14
75	0.2588	0.2571	0.2554	0.2538	0.2521	0.2504	0.2487	0.2470	0.2453	0.2436	3	6	8	11	14
76	0.2419	0.2402	0.2385	0.2368	0.2351	0.2334	0.2317	0.2300	0.2284	0.2267	3	6	8	11	14
77	0.2250	0.2233	0.2215	0.2198	0.2181	0.2164	0.2147	0.2130	0.2113	0.2096	3	6	9	11	14
78	0.2079	0.2062	0.2045	0.2028	0.2011	0.1994	0.1977	0.1959	0.1942	0.1925	3	6	9	11	14
79	0.1908	0.1891	0.1874	0.1857	0.1840	0.1822	0.1805	0.1788	0.1771	0.1754	3	6	9	11	14
80	0.1736	0.1719	0.1702	0.1685	0.1668	0.1650	0.1633	0.1616	0.1599	0.1582	3	6	9	11	14
81	0.1564	0.1547	0.1530	0.1513	0.1495	0.1478	0.1461	0.1444	0.1426	0.1409	3	6	9	12	14
82	0.1392	0.1374	0.1357	0.1340	0.1323	0.1305	0.1288	0.1271	0.1253	0.1236	3	6	9	12	14
83	0.1219	0.1201	0.1184	0.1167	0.1149	0.1132	0.1115	0.1097	0.1080	0.1063	3	6	9	12	14
84	0.1045	0.1028	0.1011	0.0993	0.0976	0.0958	0.0941	0.0924	0.0906	0.0889	3	6	9	12	14
85	0.0872	0.0854	0.0837	0.0819	0.0802	0.0785	0.0767	0.0750	0.0732	0.0715	3	6	9	12	14
86	0.0698	0.0680	0.0663	0.0645	0.0628	0.0610	0.0593	0.0576	0.0558	0.0541	3	6	9	12	15
87	0.0523	0.0506	0.0488	0.0471	0.0454	0.0436	0.0419	0.0401	0.0384	0.0366	3	6	9	12	15
88	0.0349	0.0332	0.0314	0.0297	0.0279	0.0262	0.0244	0.0227	0.0209	0.0192	3	6	9	12	15
89	0.0175	0.0157	0.0140	0.0122	0.0105	0.0087	0.0070	0.0052	0.0035	0.0017	3	6	9	12	15

[第 七 表]
正 接 / 表 (一)

分 度	0	6	12	18	24	30	36	42	48	54	十 差				
											1	2	3	4	5
0	0.0000	0.0017	0.0035	0.0052	0.0070	0.0087	0.0105	0.0122	0.0140	0.0157	3	6	9	12	15
1	0.0175	0.0192	0.0209	0.0227	0.0244	0.0262	0.0279	0.0297	0.0314	0.0332	3	6	9	12	15
2	0.0349	0.0367	0.0384	0.0402	0.0419	0.0437	0.0454	0.0472	0.0489	0.0507	3	6	9	12	15
3	0.0524	0.0542	0.0559	0.0577	0.0594	0.0612	0.0629	0.0647	0.0664	0.0682	3	6	9	12	15
4	0.0699	0.0717	0.0734	0.0752	0.0769	0.0787	0.0805	0.0822	0.0840	0.0857	3	6	9	12	15
5	0.0875	0.0892	0.0910	0.0928	0.0945	0.0963	0.0981	0.0998	0.1016	0.1033	3	6	9	12	15
6	0.1051	0.1069	0.1086	0.1104	0.1122	0.1139	0.1157	0.1175	0.1192	0.1210	3	6	9	12	15
7	0.1228	0.1246	0.1263	0.1281	0.1299	0.1317	0.1334	0.1352	0.1370	0.1388	3	6	9	12	15
8	0.1405	0.1423	0.1441	0.1459	0.1477	0.1495	0.1512	0.1530	0.1548	0.1566	3	6	9	12	15
9	0.1584	0.1602	0.1620	0.1638	0.1655	0.1673	0.1691	0.1709	0.1727	0.1745	3	6	9	12	15
10	0.1763	0.1781	0.1799	0.1817	0.1835	0.1853	0.1871	0.1890	0.1908	0.1926	3	6	9	12	15
11	0.1944	0.1962	0.1980	0.1998	0.2016	0.2035	0.2053	0.2071	0.2089	0.2107	3	6	9	12	15
12	0.2126	0.2144	0.2162	0.2180	0.2199	0.2217	0.2235	0.2254	0.2272	0.2290	3	6	9	12	15
13	0.2309	0.2327	0.2345	0.2364	0.2382	0.2401	0.2419	0.2438	0.2456	0.2475	3	6	9	12	15
14	0.2493	0.2512	0.2530	0.2549	0.2568	0.2586	0.2605	0.2623	0.2642	0.2661	3	6	9	12	16
15	0.2679	0.2698	0.2717	0.2736	0.2754	0.2773	0.2792	0.2811	0.2830	0.2849	3	6	9	13	16
16	0.2867	0.2886	0.2905	0.2924	0.2943	0.2962	0.2981	0.3000	0.3019	0.3038	3	6	9	13	16
17	0.3057	0.3076	0.3096	0.3115	0.3134	0.3153	0.3172	0.3191	0.3211	0.3230	3	6	10	13	16
18	0.3249	0.3269	0.3288	0.3307	0.3327	0.3346	0.3365	0.3385	0.3404	0.3424	3	6	10	13	16
19	0.3443	0.3463	0.3482	0.3502	0.3522	0.3541	0.3561	0.3581	0.3600	0.3620	3	7	10	13	16

20	0.3640	0.3659	0.3679	0.3699	0.3719	0.3739	0.3759	0.3779	0.3799	0.3819	3	7	10	13	17
21	0.3839	0.3859	0.3879	0.3899	0.3919	0.3939	0.3959	0.3979	0.4000	0.4020	3	7	10	13	17
22	0.4040	0.4061	0.4081	0.4101	0.4122	0.4142	0.4163	0.4183	0.4204	0.4224	3	7	10	14	17
23	0.4245	0.4265	0.4286	0.4307	0.4327	0.4348	0.4369	0.4390	0.4411	0.4431	3	7	10	14	17
24	0.4452	0.4473	0.4494	0.4515	0.4536	0.4557	0.4578	0.4599	0.4621	0.4642	4	7	11	14	18
25	0.4663	0.4684	0.4706	0.4727	0.4748	0.4770	0.4791	0.4813	0.4834	0.4856	4	7	11	14	18
26	0.4877	0.4899	0.4921	0.4942	0.4964	0.4986	0.5008	0.5029	0.5051	0.5073	4	7	11	15	18
27	0.5095	0.5117	0.5139	0.5161	0.5184	0.5206	0.5228	0.5250	0.5272	0.5295	4	7	11	15	18
28	0.5317	0.5340	0.5362	0.5384	0.5407	0.5430	0.5452	0.5475	0.5498	0.5520	4	8	11	15	19
29	0.5543	0.5566	0.5589	0.5612	0.5635	0.5658	0.5681	0.5704	0.5727	0.5750	4	8	12	15	19
30	0.5774	0.5797	0.5820	0.5844	0.5867	0.5890	0.5914	0.5938	0.5961	0.5985	4	8	12	16	20
31	0.6009	0.6032	0.6056	0.6080	0.6104	0.6128	0.6152	0.6176	0.6200	0.6224	4	8	12	16	20
32	0.6249	0.6273	0.6297	0.6322	0.6346	0.6371	0.6395	0.6420	0.6445	0.6469	4	8	12	16	20
33	0.6494	0.6519	0.6544	0.6569	0.6594	0.6619	0.6644	0.6669	0.6694	0.6720	4	8	13	17	21
34	0.6745	0.6771	0.6796	0.6822	0.6847	0.6873	0.6899	0.6924	0.6950	0.6976	4	9	13	17	21
35	0.7002	0.7028	0.7054	0.7080	0.7107	0.7133	0.7159	0.7186	0.7212	0.7239	4	9	13	18	22
36	0.7265	0.7292	0.7319	0.7346	0.7373	0.7400	0.7427	0.7454	0.7481	0.7508	5	9	14	18	23
37	0.7536	0.7563	0.7590	0.7618	0.7646	0.7673	0.7701	0.7729	0.7757	0.7785	5	9	14	18	23
38	0.7813	0.7841	0.7869	0.7898	0.7926	0.7954	0.7983	0.8012	0.8040	0.8069	5	9	14	19	24
39	0.8098	0.8127	0.8156	0.8185	0.8214	0.8243	0.8273	0.8302	0.8332	0.8361	5	10	15	20	24
40	0.8391	0.8421	0.8451	0.8481	0.8511	0.8541	0.8571	0.8601	0.8632	0.8662	5	10	15	20	25
41	0.8693	0.8724	0.8754	0.8785	0.8816	0.8847	0.8878	0.8910	0.8941	0.8972	5	10	16	21	26
42	0.9004	0.9036	0.9067	0.9099	0.9131	0.9163	0.9195	0.9228	0.9260	0.9293	5	11	16	21	27
43	0.9325	0.9358	0.9391	0.9424	0.9457	0.9490	0.9523	0.9556	0.9590	0.9623	6	11	17	22	28
44	0.9657	0.9691	0.9725	0.9759	0.9793	0.9827	0.9861	0.9896	0.9930	0.9965	6	11	17	23	29

〔第七表〕 正接 / 表 (二)

分度	30													差				
	0	6	12	18	24	30	36	42	48	54	1	2	3	4	5			
45	1.0000	1.0035	1.0070	1.0105	1.0141	1.0176	1.0212	1.0247	1.0283	1.0319	6	12	18	24	30			
46	1.0355	1.0392	1.0428	1.0464	1.0501	1.0538	1.0575	1.0612	1.0649	1.0686	6	12	18	25	31			
47	1.0724	1.0761	1.0799	1.0837	1.0875	1.0913	1.0951	1.0990	1.1028	1.1067	6	13	19	25	32			
48	1.1106	1.1145	1.1184	1.1224	1.1263	1.1303	1.1343	1.1383	1.1423	1.1463	7	13	20	26	33			
49	1.1504	1.1544	1.1585	1.1626	1.1667	1.1708	1.1750	1.1792	1.1833	1.1875	7	14	21	28	34			
50	1.1918	1.1960	1.2002	1.2045	1.2088	1.2131	1.2174	1.2218	1.2261	1.2305	7	14	22	29	36			
51	1.2349	1.2393	1.2437	1.2482	1.2527	1.2572	1.2617	1.2662	1.2708	1.2753	8	15	23	30	38			
52	1.2799	1.2846	1.2892	1.2938	1.2985	1.3032	1.3079	1.3127	1.3175	1.3222	8	16	24	31	39			
53	1.3270	1.3319	1.3367	1.3416	1.3465	1.3514	1.3564	1.3613	1.3663	1.3713	8	16	25	33	41			
54	1.3764	1.3814	1.3865	1.3916	1.3968	1.4019	1.4071	1.4124	1.4176	1.4229	9	17	26	34	43			
55	1.4281	1.4335	1.4388	1.4442	1.4496	1.4550	1.4605	1.4659	1.4715	1.4770	9	18	27	36	45			
56	1.4826	1.4882	1.4938	1.4994	1.5051	1.5108	1.5166	1.5224	1.5282	1.5340	10	19	29	38	48			
57	1.5399	1.5458	1.5517	1.5577	1.5637	1.5697	1.5757	1.5818	1.5880	1.5941	10	20	30	40	50			
58	1.6003	1.6066	1.6128	1.6191	1.6255	1.6319	1.6383	1.6447	1.6512	1.6577	11	21	32	43	53			
59	1.6643	1.6709	1.6775	1.6842	1.6909	1.6977	1.7045	1.7113	1.7182	1.7251	11	23	34	45	56			
60	1.7321	1.7391	1.7461	1.7532	1.7603	1.7675	1.7747	1.7820	1.7893	1.7966	12	24	36	48	60			
61	1.8040	1.8115	1.8190	1.8265	1.8341	1.8418	1.8495	1.8572	1.8650	1.8728	13	26	38	51	64			
62	1.8807	1.8887	1.8967	1.9047	1.9128	1.9210	1.9292	1.9375	1.9458	1.9542	14	27	41	55	68			
63	1.9626	1.9711	1.9797	1.9883	1.9970	2.0057	2.0145	2.0233	2.0323	2.0413	15	29	44	58	73			
64	2.0503	2.0594	2.0686	2.0778	2.0872	2.0965	2.1060	2.1155	2.1251	2.1348	16	31	47	63	79			

65	2.1445	2.1543	2.1642	2.1742	2.1842	2.1943	2.2045	2.2148	2.2251	2.2355
66	2.2460	2.2566	2.2673	2.2781	2.2889	2.2998	2.3109	2.3220	2.3332	2.3445
67	2.4751	2.4876	2.5002	2.5129	2.5257	2.5386	2.5517	2.5649	2.5782	2.5916
68	2.6051	2.6187	2.6325	2.6464	2.6605	2.6746	2.6889	2.7034	2.7179	2.7326
70	2.7475	2.7625	2.7776	2.7929	2.8083	2.8239	2.8397	2.8556	2.8716	2.8878
71	2.9042	2.9208	2.9375	2.9544	2.9714	2.9887	3.0061	3.0237	3.0415	3.0595
72	3.0777	3.0961	3.1146	3.1334	3.1524	3.1716	3.1910	3.2106	3.2305	3.2506
73	3.2709	3.2914	3.3122	3.3332	3.3544	3.3759	3.3977	3.4197	3.4420	3.4646
74	3.4874	3.5105	3.5339	3.5576	3.5816	3.6059	3.6305	3.6554	3.6806	3.7062
75	3.7321	3.7583	3.7848	3.8118	3.8391	4.8667	3.8947	3.9232	3.9520	3.9812
76	4.0108	4.0408	4.0713	4.1022	4.1335	4.1653	4.1976	4.2303	4.2635	4.2972
77	4.3315	4.3662	4.4015	4.4373	4.4737	4.5107	4.5483	4.5864	4.6252	4.6646
78	4.7046	4.7453	4.7867	4.8288	4.8716	4.9152	4.9594	5.0045	5.0504	5.0970
79	5.1446	5.1929	5.2422	5.2924	5.3435	5.3955	5.4486	5.5026	5.5578	5.6140
80	5.6713	5.7297	5.7894	5.8502	5.9124	5.9758	6.0405	6.1066	6.1742	6.2432
81	6.3138	6.3859	6.4596	6.5350	6.6122	6.6912	6.7720	6.8548	6.9395	7.0264
82	7.1154	7.2066	7.3002	7.3962	7.4947	7.5958	7.6996	7.8062	7.9158	8.0285
83	8.1443	8.2636	8.3863	8.5126	8.6427	9.7769	8.9152	9.0579	9.2052	9.3572
84	9.5144	9.6768	9.8448	10.019	10.199	10.385	10.579	10.780	10.988	11.205
85	11.430	11.664	11.909	12.163	12.429	12.706	12.996	13.299	13.617	13.951
86	14.301	14.668	15.056	15.464	15.894	16.350	16.832	17.343	17.886	18.464
87	19.081	19.740	20.446	21.205	22.022	22.904	23.859	24.898	26.031	27.271
88	28.636	30.145	31.820	33.693	35.800	38.181	40.917	44.066	47.739	52.081
89	57.290	63.657	71.615	81.847	95.489	114.59	143.24	190.98	286.48	572.96

〔第八表〕
尺貫法・ヤード法
とポンド法
の度量衡及ビ度量衡換算表

長	サ	面	積	體	積	重	サ
1 尺	= 0.01 尺 = 0.1 尺 ($= \frac{10}{33} m$) = 10 尺	1 平方尺	1 坪 = 0.1 坪 = 6 尺平方	1 立方尺	1 坪又ハ立坪 = 6 尺立方	1 厘	= 0.01 匁
1 寸	= 10 尺	1 合	= 30 坪	1 勺	= 0.01 升	1 分	= 0.1 匁
1 尺	= 6 尺	1 坪又ハ歩	= 10 畝	1 合	= 0.1 升	1 匁	= 0.001 貫
1 丈	= 60 間	1 畝	= 10 段	1 升($= \frac{2401}{1331} l$)	= 64827 立方分	1 貫	($= \frac{15}{4} kg$)
1 間	= 36 町	1 町	= 1296 町	1 斗	= 10 升	1 斤	= 160 匁
1 里		1 方里		1 石	= 10 斗		
1 インチ	= $\frac{1}{12}$ フート	1 平方ヤード		1 ガロン	(日本制 = 3.7854 l)	1 ゲレオン	= $\frac{1}{7000}$ ポンド
1 フート	= $\frac{1}{3}$ ヤード	1 エーカー		1 ベック	= 2 ガロン	1 オンス	= $\frac{1}{16}$ ポンド
1 ヤード	(日本制 = 0.9144 m)	= 4840 平方ヤード		1 ブッシュェル	= 4 ベック	1 ポンド	(日本制 = 0.4536 kg)
1 マイル	(哩) = 1760 ヤード	1 平方マイル		1 クォーター	= 8 ブッシュェル	1 トン(英トン)	= 2240 ポンド
		= 640 エーカー					
米	フート	坪	平方ヤード	立	升	瓦	匁
1	3.30000	3.30250	1.19599	1	0.55435	0.26417	0.26667
0.30303	1	1	3.95369	1.80391	1	0.47654	3.75000
0.30480	1.00584	0.25293	1	3.78543	2.09846	1.	0.45360
秆	マイル	方里	平方マイル	瓦	匁	オンス	匁
1	0.25463	0.06484	0.38610	1	0.26667	0.03527	1
3.92727	1	1	5.95500	3.75000	1	0.13228	0.00375
1.60934	0.40971	1	1	28.350	7.56000	1	1.01606
							270.95
							1

數表
(中學校用)

昭和 18 年 4 月 4 日 印刷
昭和 18 年 4 月 8 日 發行

定價 15 錢

著作權所有

著作發行

東京市神田區岩本町三番地
中等學校教科書株式會社
代表者 山本慶治

印刷者

東京市王子區神谷町一ノ四八二
東京證券印刷株式會社
(東京四四三八) 代表者 古川一郎

配給元

東京市神田區深路町二丁目九番地
日本出版配給株式會社

發行所

東京市神田區岩本町三番地
中等學校教科書株式會社
日本出版文化協會會員番號 117622

(略名) 中學數表

中等學校教科書株式會社

広島大学図書

0130449544

